

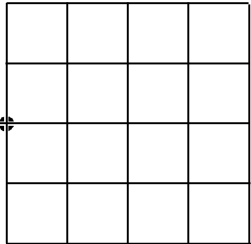
U.S. PUBLIC LAND SURVEY MONUMENT RECORD

Note: This form is intended and designed to fulfill all requirements of the Wisconsin Administrative Code, Chapter A-E 7.08 U.S. Public Land Monument Record (3)(a)(b)(c)(d)(e)(f)(g)(h)(i). An additional sheet may be added if necessary to conform with said requirements.

(a) CORNER LOCATION: COORDINATES

west quarter corner of Section 10
Township 39 North
Range 8 East
Town of Newbold
County of Oneida

North:
East:
Control Station:
Latitude:
Longitude:
Datum Method



SECTION 10

(b) HISTORY OF ORIGINAL CORNER ESTABLISHMENT

Original Surveyor: A. Anderson Original B.T.'S
Date of Survey: Commenced, July, 1863 Birch 8" dia. S82°W 43 links
Completed, July, 1863 W. Pine 6" dia. S22°E 11 links

(f)(g)(h) DESCRIPTION OF MONUMENT FOUND AT THIS CORNER AND IF IT WAS ACCEPTED, STATE ALL EVIDENCE (MATERIAL, TESTIMONIAL, OCCUPATIONS, PLATS, RECORDS, OTHER MONUMENTS) USED AS A BASIS FOR ESTABLISHING LOCATION. IF NOT ACCEPTED OF IF NOTHING WAS FOUND, STATE EVIDENCE USED AS BASIS FOR ESTABLISHING LOCATION. IF REESTABLISHED THROUGH LOST CORNER PROPORTIONATE METHODS, INDICATE ALL MONUMENTS, DISTANCES AND DIRECTIONS USED TO ESTABLISH. INDICATE TYPE OF MONUMENT AND SIGN POST FOUND OR SET.

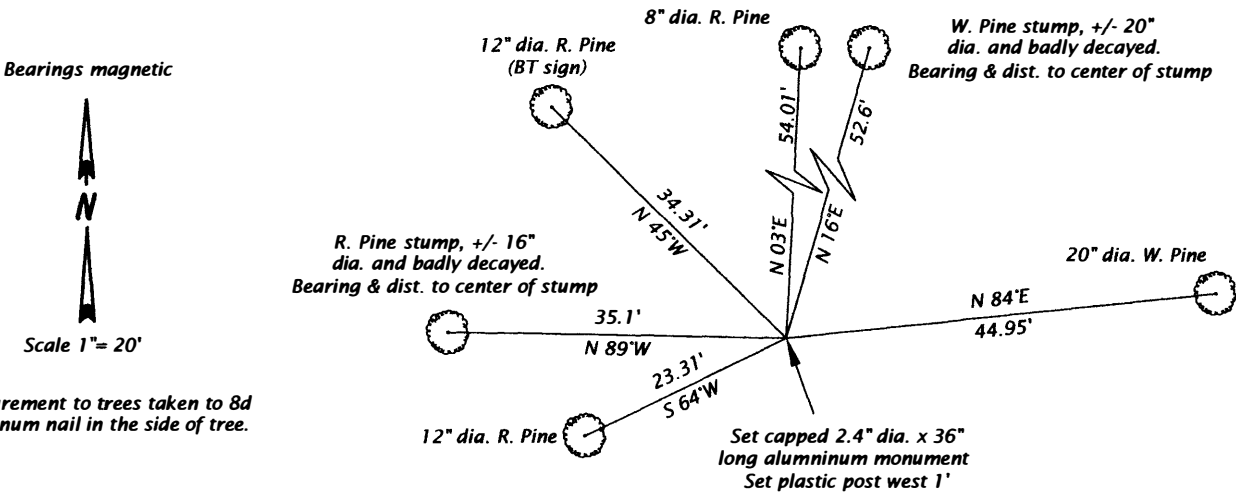
Original Surveyor: A. Anderson, north between Sections 9 and 10, at 40 chains set quarter section post.

Wisconsin Valley Improvement Corporation: Oneida County Survey Map No. B2553, shows corner to be monumented by an iron pipe, and witnessed by the following bearing trees: 14" N. Pine stump N89-30W 34.6' and a 21" W. Pine stump N13-30E 51.6'.

Wisconsin Valley Improvement Corporation: On corner data sheet dated June 24, 1977, identifies corner to be monumented with a 2 1/2" dia. iron pipe, and witnessed by the following bearing trees: 20" White Pine stump bearing N13E 51.0' distant and a 16" Red Pine stump bearing N89W 34.5' distant.

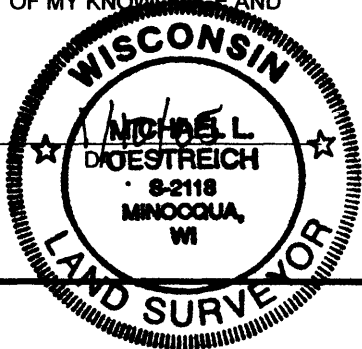
Michael L. Oestreich: 12/09/04, recovered a 2.4" dia. iron pipe, and the following witnesses: a 20" dia. White Pine stump, badly decayed, no blaze or scribing visible, bearing and distance to approximate center of stump N16E 52.6' and a 16" dia. Red Pine stump, badly decayed, blaze and faint scribing still visible, bearing and distance to approximate center of stump, N89W 35.1'. I replaced the iron pipe with a capped aluminum monument, stamped to identify corner, and made ties as shown in the plan below.

(c)(d)(e) PLAN VIEW OF CORNER WITH TIES TO AT LEAST 4 WITNESS MONUMENTS. IF IN DISAGREEMENT WITH PREVIOUSLY ESTABLISHED CORNER, SHOW THE DISTANCE BETWEEN THE TWO CORNERS AND ALSO INDICATE THE TIES TO THE DISPUTED CORNER.



(i) I, MICHAEL L. OESTREICH, REGISTERED LAND SURVEYOR NO. S-2118 HEREBY CERTIFY THAT THE CORNER LOCATION ON THIS RECORD WAS DETERMINED BY ME OR UNDER MY DIRECTION AND CONTROL AND THAT THIS U.S. PUBLIC LAND SURVEY MONUMENT RECORD IS CORRECT AND COMPLETE TO THE BEST OF MY KNOWLEDGE AND BELIEF.

Michael L. Oestreich
SIGNATURE



3908092000

INDEX NO. 613