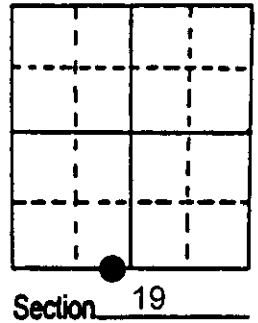


U.S. PUBLIC LAND SURVEY MONUMENT RECORD

Note: This form is intended and designed to fulfill all requirements of Wisconsin Administrative Code, Chapter A-E 7.08 U.S. Public Land Survey Monument Record (3) (a) (b) (c) (d) (e) (f) (g) (h) (i). An additional sheet may be added if necessary to conform with said requirements.

(a) Corner location: Township 39 North
 Range 8 East/West
 Town/~~City/Village~~ Newbold
 County Oneida

Meander Corner on South Section Line — West of South Quarter Corner.

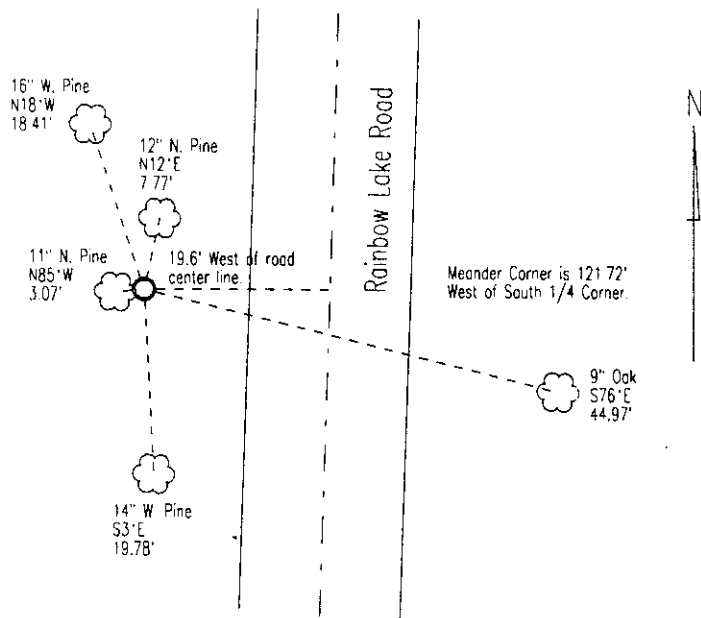


(b) (f) (g) (h) Description of monument found at this corner and if it was accepted, state all evidence (material, testimonial, occupational, plats, records, other monuments) used as a basis for accepting. If not accepted or if nothing was found, state evidence used as basis for establishing location. If reestablished through lost corner proportionate methods, indicate all monuments, distances and directions used to establish. Indicate type of monument found or set and sign post.

The South quarter corner of this section was flooded by the Rainbow Reservoir and the Meander corner was set by R. W. Smith in 1938. The corner was visible for many years but was destroyed, including the bearing trees, by severe shoreline erosion. A new Meander corner iron pipe was set by R. C. Wylie in 1992 (See Wisconsin Valley Improvement Company map #92005). Wylie used the found Southwest section corner, a Meander corner just West of the 1/16 corner and the 1/16 corner. Distances to the non-existent South quarter corner and thus between the new Meander corner and the South quarter corner were determined by using the ratio of R. W. Smith's survey of the found corners with the E. D. M. distances on this survey.

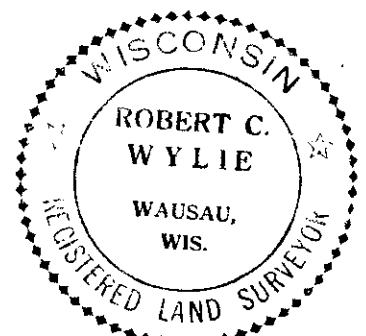
On May 15, 2001 this iron pipe corner was replaced with an Oneida County aluminum monument. Two bearing trees from the previous survey were re-marked and re-used. Three additional bearing trees were established. All measuring points are to a PK nail about 1' above the ground on the side of each tree. An aluminum placard was placed on each bearing tree and a plastic post was placed near the monument.

(c) (d) (e) Plan view of corner with ties to at least 4 witness monuments. If in disagreement with previously established corner, show the distances between the two corners and also indicate the ties to the disputed corner.



(i) I, _____
 (type or print name) certify that the corner location on this record was determined by me or under my direction and control and that this U.S. Public Land Survey Monument Record is correct and complete to the best of my knowledge and belief.

Robert C. Wylie May 24, 2001
 Signature Date



Stamp
 3908190021

Index No. R 2-3