

Stock No. 26273

U. S. PUBLIC LAND SURVEY MONUMENT RECORD

INSTRUCTIONS

The record should be made in accordance with the instructions on the reverse side of this form.

Identify the corner by reference to the U.S. public land survey system.

Original corner, a wood post was established in July, 1863 by Alexander Anderson, Government Deputy Surveyor.

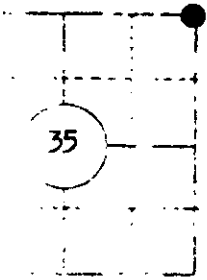
Tamarack 5 N25W 81 lks
No other near

Compared with all record data & accepted as correct.

Robert H. Wink

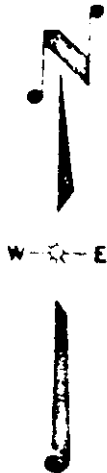
Oneida County Surveyor 27 Apr 1983

S35 T39N R8E



SKETCH

Monument indicated by "●"



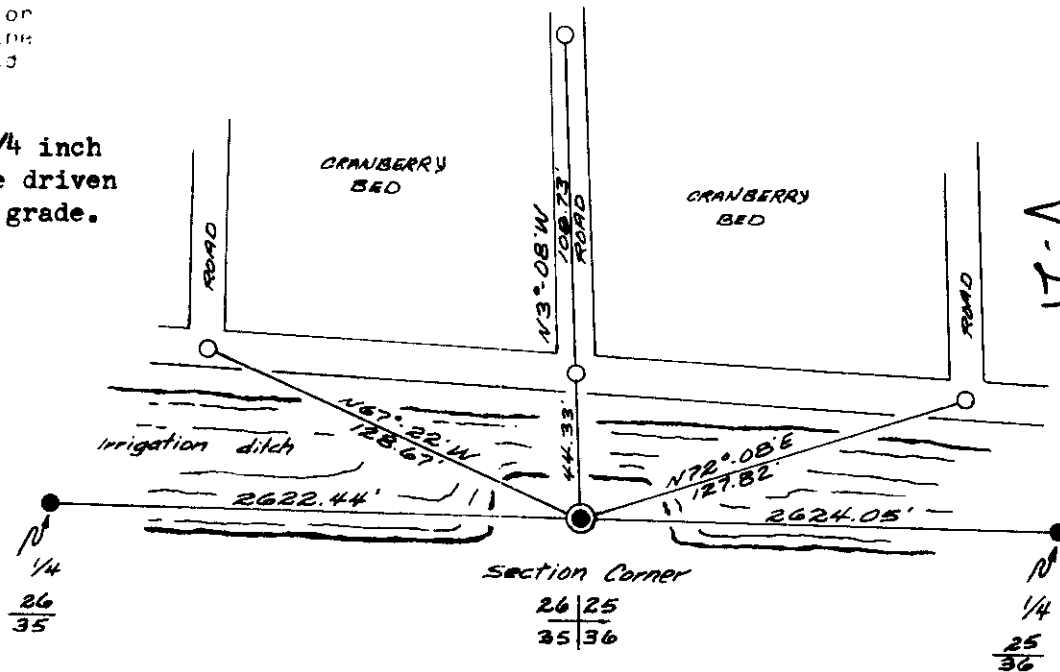
If you have any record evidence, monument evidence, or other material evidence you consider relevant to the monument, please describe it in the space provided below.

Found WCD brass capped 2 inch diameter iron pipe in place. Cap stamped to identify corner. Corner was established in a survey for the American Legion State Forest by Robert L. Ilg, RLS, Wisconsin Conservation Department 1963-64.

In the plan view drawing below, provide reference to at least 4 witness monuments. If the location is within a municipality, town or village, witness monuments should be made of concrete, natural stone or other equally durable material. Describe witness monuments.

With a plan view drawing showing the relevant monuments and reference lines which is sufficient in detail to enable accurate relocation of the corner monument, the corner monument is distributed to indicate north.

○ = Witness monument 3/4 inch by 24 inch iron pipe driven 6 inches below road grade.



3908260000

Describe any material discrepancy between the location of the corner as restored or re-established and the location of that corner as previously restored or established by distance and direction. Show the discrepancy on the plan view drawing above. Show the distances between the corner as previously established and (1) the corner as restored or re-established and (2) at least 2 of the witness monuments shown on the drawing in (d) above.

Was the corner restored through acceptance of the perpetuated evidence location, or, if found perpetuated location?

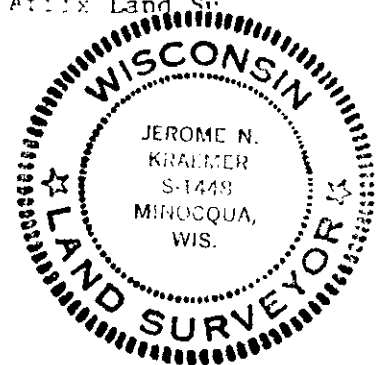
The corner position was restored by acceptance of a found monumented corner as re-established by Robert L. Ilg, RLS, 1963-64.

Was the corner reestablished through use of other monuments, monuments, or other evidence, including the directions and distances to other public and survey monuments, or used for proportioning to determine the corner location?

REGISTER OF DEEDS OFFICE
ONEIDA COUNTY, WIS.
FILED
MAY 11 1982
At 4:13 O'clock P.M.
DORIS VERAGE KUEHN
REGISTER OF DEEDS

JEROME N. KRAEMER

Affix Land Surveyor Seal



Jerome N. Kraemer

December 29, 1982