

U.S. PUBLIC LAND SURVEY MONUMENT RECORD

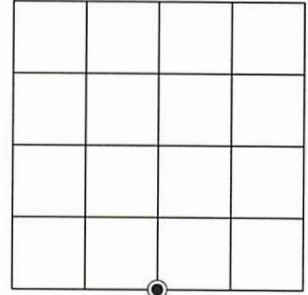
Note: This form is intended and designed to fulfill all requirements of the Wisconsin Administrative Code, Chapter A-E 7.08 U.S. Public Land Monument Record (3)(a)(b)(c)(d)(e)(f)(g)(h)(i). An additional sheet may be added if necessary to conform with said requirements.

(a) CORNER LOCATION:
 South Quarter corner of Section 27
 Township 39 North
 Range 8 East
 Town of Newbold
 County of Oneida

WISCRS - Oneida County
 North: 235,690.92 USft
 East: 247,029.72 USft
 Datum: NAD 83(2011) *ep. 2010.00*
 GNSS Method: RTN - Direct
 GNSS Control: WISCORS VRS

(RECORDING AREA)

SECTION 27



(b) HISTORY OF ORIGINAL CORNER ESTABLISHMENT

Original Surveyor: Alexander Andersen
 Date of Survey: Commenced July 22, 1863
 Completed July 31, 1863
 Original B.T.'S: Tamarack 8" N 40°W, 18 links
 Tamarack 10" S 28°W, 18 links

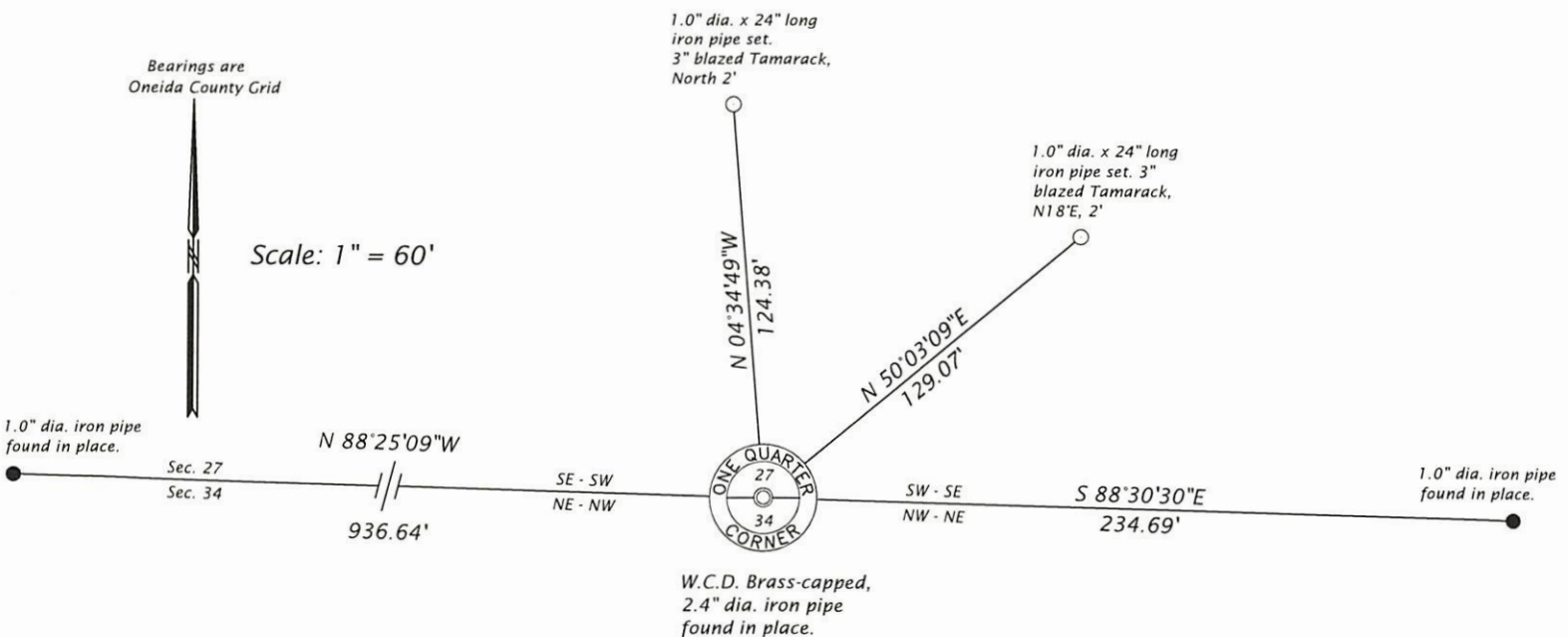
(f)(g)(h) DESCRIPTION OF MONUMENT FOUND AT THIS CORNER AND IF IT WAS ACCEPTED, STATE ALL EVIDENCE (MATERIAL, TESTIMONIAL, OCCUPATIONAL, PLATS, RECORD, OTHER MONUMENTS) USED AS A BASIS FOR ESTABLISHING LOCATION. IF NOT ACCEPTED OR IF NOTHING WAS FOUND, STATE EVIDENCE USED AS BASIS FOR ESTABLISHING LOCATION. IF REESTABLISHED THROUGH LOST CORNER PROPORTIONATE METHODS, INDICATE ALL MONUMENTS, DISTANCES AND DIRECTIONS USED TO ESTABLISH. INDICATE TYPE OF MONUMENT AND SIGN POST FOUND OR SET.

Assumed ±1964 - Robert Ilg, RLS determined the corner was lost and set WCD brass capped 2.4' o.d. iron pipe at single proportionate distance.

February 7th, 1972 - recorded plat of Jack Pine Forest, John H. Fister, RLS No, 836, accepts a recovered WCD brass capped iron pipe as marking the corner.

May 15, 2024 - James D. Rein, PLS No 1234, we recovered a WCD brass capped 2.4" o. d. iron pipe, the top of which is 6" below the water surface in open flowage wetland. This monument has also been accepted as marking the corner on Certified Survey Map 2044 and that survey filed as A1789 in the county survey records. I accept the WCD monument as a perpetuation of a "good faith" position for the restoration of a lost corner and further perpetuate as shown in plan.

(c)(d)(e) PLAN VIEW OF CORNER WITH TIES TO AT LEAST 4 WITNESS MONUMENTS. IF IN DISAGREEMENT WITH PREVIOUSLY ESTABLISHED CORNER, SHOW THE DISTANCE BETWEEN THE TWO CORNERS AND ALSO INDICATE THE TIES TO THE DISPUTED CORNER.



(i) I, JAMES D. REIN, PROFESSIONAL LAND SURVEYOR NO. S-1234 HEREBY CERTIFY THAT THE CORNER LOCATION ON THIS RECORD WAS DETERMINED BY ME OR UNDER MY DIRECTION AND CONTROL AND THAT THIS U.S. PUBLIC LAND SURVEY MONUMENT RECORD IS CORRECT AND COMPLETE TO THE BEST OF MY KNOWLEDGE AND BELIEF.



James D. Rein
 SIGNATURE

6/15/24
 DATE

INDEX NO. V-15
 3908270020