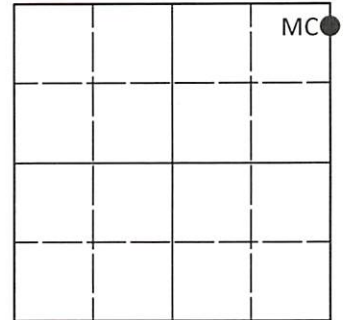


# U.S. PUBLIC LAND SURVEY MONUMENT RECORD

Note: This form is intended and designed to fulfill all requirements of Wisconsin Administrative Code, Chapter A-E 7.08 U.S. Public Land Survey Monument Record (3)(a-i).

(a) CORNER LOCATION  
 Meander Cor. of Secs. 31 & 32  
 Township 39 North  
 Range 8 East of the 4th P.M.  
 Town of Newbold  
 County of Oneida

WISCRS - Oneida County  
 N: 235,024.36 USft  
 E: 233,896.83 USft  
 Datum: NAD 83(2011) ep. 2010.00  
 GNSS Method: RTN - Direct  
 GNSS Control: WISCORS VRS



Sec. 31, T. 39 N., R. 8 E.

(b)(f)(g)(h) Description of monument found at this corner and if it was accepted, state all evidence (material, testimonial, occupational, plats, records, other monuments) used as a basis for accepting. If not accepted or if nothing was found, state evidence used as basis for establishing location. If re-established through lost corner proportionate methods, indicate all monuments, distances and directions used to establish. Indicate type of monument and sign post found or set.

July, 1863: GLO survey by Alexander Anderson, U.S. Deputy Surveyor. North between Secs. 31 and 32, at 72.53 chs. set a wood post witnessed by: w. pine 12 N26°E, 23 lks.; y. pine 6 N10°W, 35 lks.

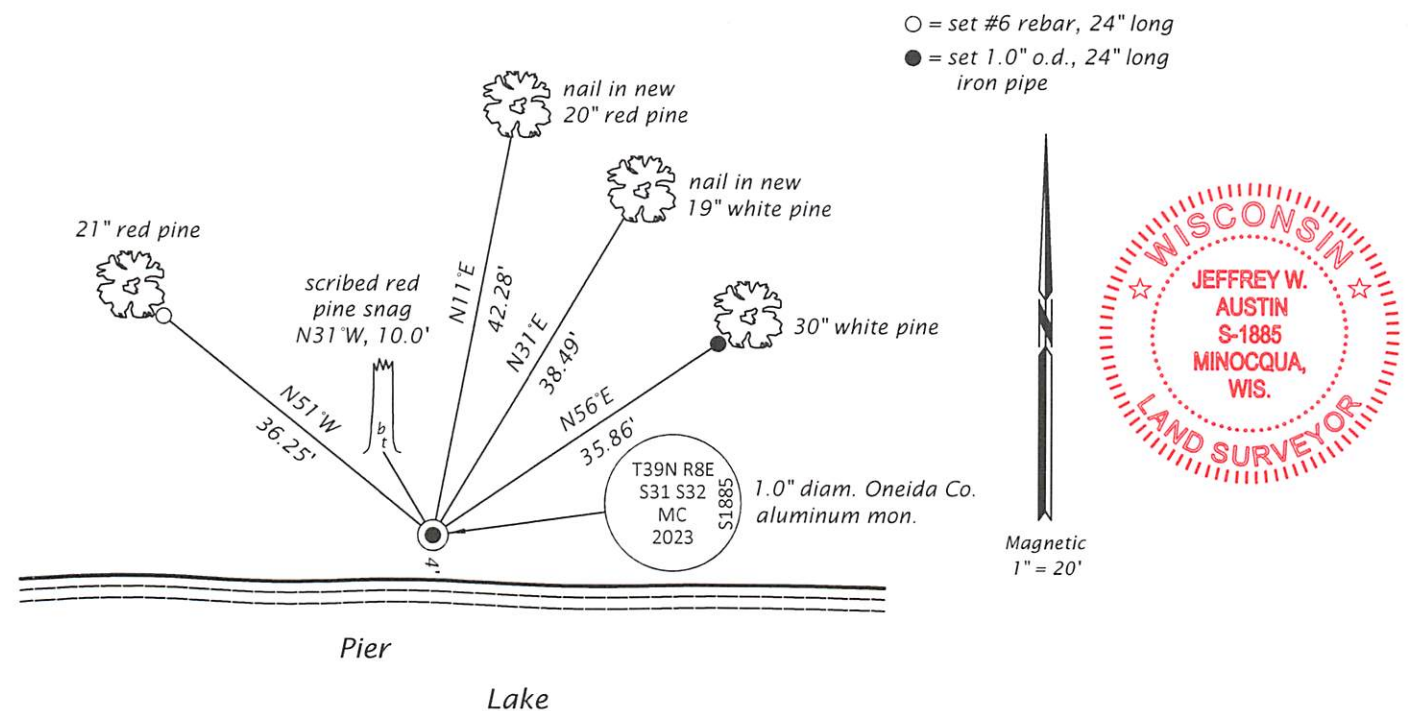
September 11, 1956: On OCS Map No. C-2038, Joseph Kirby identifies corner as being witnessed by: n. pine 18" N33°E, 9.8'; n. pine 6" N57°E, 6.8'

March, 1965: On OCS Map No. C-2040, James Griffin identifies corner as "iron pipe" witnessed by: 20" n. pine N28°W, 10.2'; 8" n. pine N67°E, 16.0'


July 25, 2023: I found and accepted the record monument, a 2.4" o.d., 24" long iron pipe. A scribed red pine snag bears N31°W, 10.0 feet. I believe this is Griffin's tree and also Kirby's tree with the bearing in the wrong quadrant. A tipped, blazed red pine 13" bears N58°E, 6 feet. I believe this is Kirby's tree and also Griffin's tree with the distance wrong by 10 feet. At the corner point, I set a 1.0" diam., 30" long aluminum pipe with a 2.5" diam. Oneida Co. aluminum cap flush with the ground surface. I found or established accessories as indicated below. I set a white vinyl sign post bearing South, 0.5 ft.

The coordinate value shown is the weighted mean of two or more GNSS observations at markedly different times satisfying the accuracy requirements defined and qualified in the 2022 Oneida County Fee Schedule for USPLS Corners.

(c)(d)(e) Plan view of corner with ties to at least 4 witness monuments. If in disagreement with previously established corner, show the distances between the two corners and also indicate the ties to the disputed.



(i) I, Jeffrey W. Austin, Professional Land Surveyor No. S-1885, hereby certify that the corner location on this record was determined by me or under my direction and control and that this U.S. Public Land Survey Monument Record is correct and complete to the best of my knowledge and belief.

  
 Signature  
 Date Aug. 1, 2023

REGISTER OF DEEDS OFFICE  
 ONEIDA COUNTY  
 FILED

AUG 07 2023

KYLE J. FRANSON  
 REGISTER OF DEEDS