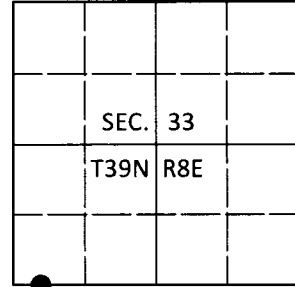


U.S. PUBLIC LAND SURVEY MONUMENT RECORD

Note: This form is intended and designed to fulfill all requirements of Wisconsin Administrative Code, Chapter A-E 7.08 U.S. Public Land Survey Monument Record (3)(a-i).

(a) CORNER LOCATION
Wit. Meander Cor. of Secs. 4 & 33
Township 38 & 39 North
Range 8 East of the 4th P.M.
Town of Newbold
County of Oneida

WISCRS - Oneida County
N: 230,414.62 USft
E: 239,594.35 USft
Datum: NAD83(2011)
GNSS Method: RTN - Direct
GNSS Control: WISCORS VRS



(b) HISTORY OF ORIGINAL CORNER ESTABLISHMENT

Original Surveyor: Alfred Millard

Original Accessories:

WCMC

Date of Survey Commenced: Aug., 1860
Completed: Sep., 1860

y. pine 11" N52°E, 38 lks.
y. pine 12" S10°W, 13 lks.

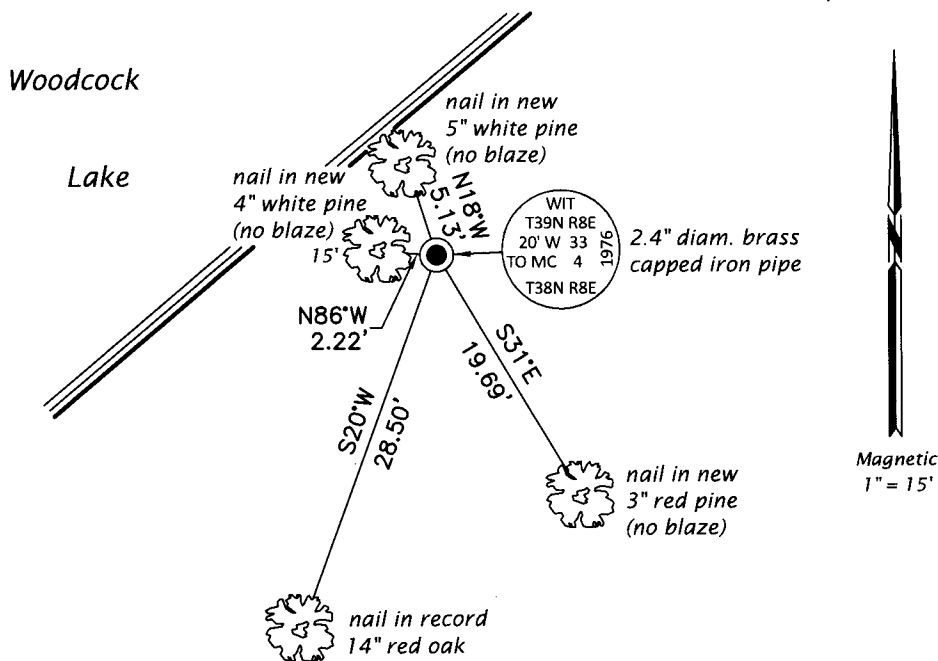
(b)(f)(g)(h) Description of monument found at this corner and if it was accepted, state all evidence (material, testimonial, occupational, plats, records, other monuments) used as a basis for accepting. If not accepted or if nothing was found, state evidence used as basis for establishing location. If re-established through lost corner proportionate methods, indicate all monuments, distances and directions used to establish. Indicate type of monument and sign post found or set.

May 24, 1977: On OCS Map No. C-357, Fred Copp identifies witness corner as "DNR 2" I.P. with brass cap" witnessed by: OR 9" N80°E, 9.6' and OR 11" S20°W, 28.5'.

June 18, 2019: I found and accepted the record monument, a 2.4" diam. iron pipe with a 3" diam. DNR brass cap projecting 10" above the ground surface. The record bearing tree at N80°E is now a stump. I found or established accessories as shown below. I set a white vinyl sign post bearing North, 0.9 ft.

The coordinate value shown has been verified by at least one of the following methods: 1) comparison to a previously GPS determined published value; 2) the value is the average of two or more GPS observations at a markedly different time; 3) one or more distances were measured back to the GPS observed corner from temporary GPS observed offset locations.

(c)(d)(e) Plan view of corner with ties to at least 4 witness monuments. If in disagreement with previously established corner, show the distances between the two corners and also indicate the ties to the disputed.



REGISTER OF DEEDS OFFICE
ONEIDA COUNTY
FILED

AUG 28 2019

KYLE J. FRANSON
REGISTER OF DEEDS

(i) I, Jeffrey W. Austin, Professional Land Surveyor No. S-1885, hereby certify that the corner location on this record was determined by me or under my direction and control and that this U.S. Public Land Survey Monument Record is correct and complete to the best of my knowledge and belief.

Signature

JUL 19, 2019
Date

3908330037 (INDEX NO. Z-9,10)