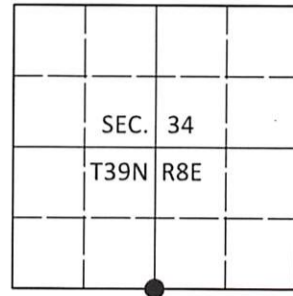


U.S. PUBLIC LAND SURVEY MONUMENT RECORD

Note: This form is intended and designed to fulfill all requirements of Wisconsin Administrative Code, Chapter A-E 7.08 U.S. Public Land Survey Monument Record (3)(a-i).

(a) CORNER LOCATION
 1/4 Cor. of Secs. 3 & 34
 Township 38 & 39 North
 Range 8 East of the 4th P.M.
 Town of Newbold
 County of Oneida

WISCORS - Oneida County
 N: 230,355.22 USft
 E: 247,081.36 USft
 Datum: NAD 83(2011)
 GNSS Method: RTN - Offset
 GNSS Control: WISCORS VRS



(b) HISTORY OF ORIGINAL CORNER ESTABLISHMENT

Original Surveyor: Alfred Millard

Original Accessories:

Date of Survey Commenced: Sept., 1860
 Completed: Sept., 1860

W. Pine 12" N22°W, 21 lks.
 W. Pine 14" S18°E, 25 lks.

(b)(f)(g)(h) Description of monument found at this corner and if it was accepted, state all evidence (material, testimonial, occupational, plats, records, other monuments) used as a basis for accepting. If not accepted or if nothing was found, state evidence used as basis for establishing location. If re-established through lost corner proportionate methods, indicate all monuments, distances and directions used to establish. Indicate type of monument and sign post found or set.

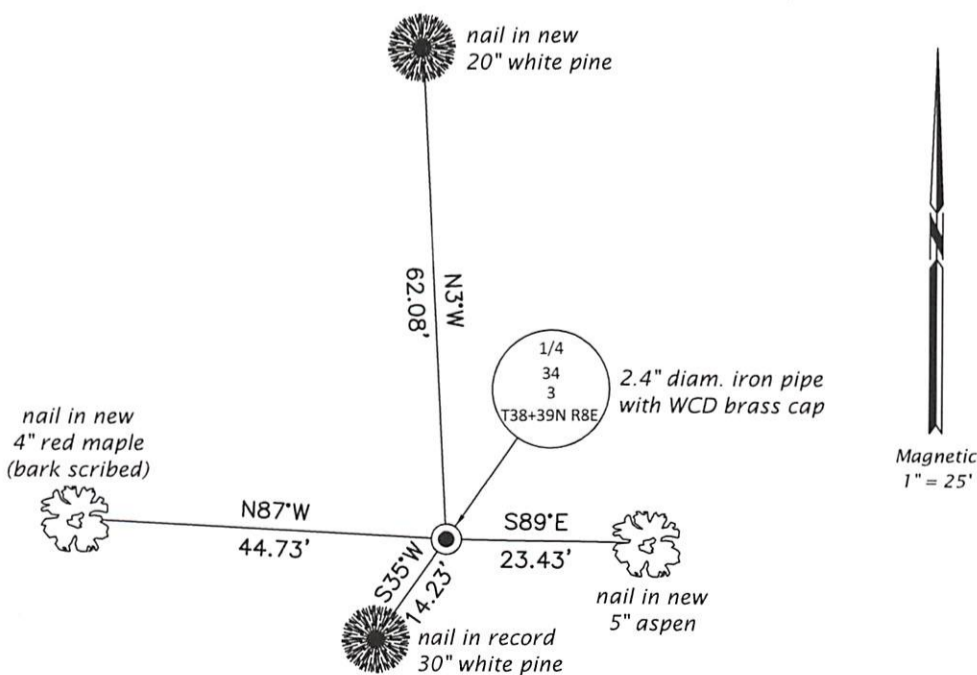
1964: On OCS Map No. L-684, Wisconsin WCD/DNR identifies corner as: 2" WCD brass cap IP 15" high. SW side of "K" marsh is ±2 ch. to the NE.

BT 18" PW S11°E, 33.3 lk.
 BT 18" PW S38°W, 21.7 lk.

Sep. 18, 2020: I found and accepted the record monument, a 2.4" diam. iron pipe with a 3.0" diam. WCD brass cap projecting 8" above the ground surface. The record bearing tree at S11°E is standing dead. I found or established accessories as shown below. I set a white vinyl sign post bearing Northeast, 1.0 ft.

The coordinate value shown has been verified by at least one of the following methods: 1) comparison to a previously GPS determined published value; 2) the value is the average of two or more GPS observations at a markedly different time; 3) one or more distances were measured back to the GPS observed corner from temporary GPS observed offset locations.

(c)(d)(e) Plan view of corner with ties to at least 4 witness monuments. If in disagreement with previously established corner, show the distances between the two corners and also indicate the ties to the disputed.

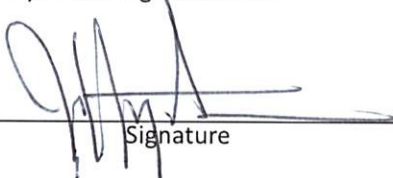


REGISTER OF DEEDS OFFICE
 ONEIDA COUNTY
 FILED

JAN 13 2021

KYLE J. FRANSON
 REGISTER OF DEEDS

(i) I, Jeffrey W. Austin, Professional Land Surveyor No. S-1885, hereby certify that the corner location on this record was determined by me or under my direction and control and that this U.S. Public Land Survey Monument Record is correct and complete to the best of my knowledge and belief.


 Signature

15 DEC 2020
 Date