

U.S. PUBLIC LAND SURVEY MONUMENT RECORD

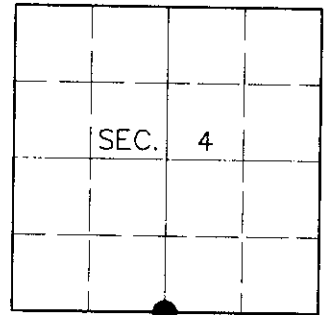
Note: This form is intended and designed to fulfill all requirements of Wisconsin Administrative Code, Chapter A-E 7.08, U.S. Public Land Survey Monument Record (3)(a)(b)(c)(d)(e)(f)(g)(h)(i). An additional sheet may be added if necessary to conform with said requirements.

(a) CORNER LOCATION

South ¼ Corner of Section 4
 Township 39 North
 Range 9 East
 Town of Sugar Camp

State Plane Coordinates

X
 Y
 Datum
 County of Oneida



(b) HISTORY OF ORIGINAL CORNER ESTABLISHMENT

Original Surveyor: William E. Daugherty

Original Bearing Trees:

Date of Survey: Commenced Sept. 22, 1863
 Completed Sept. 29, 1863

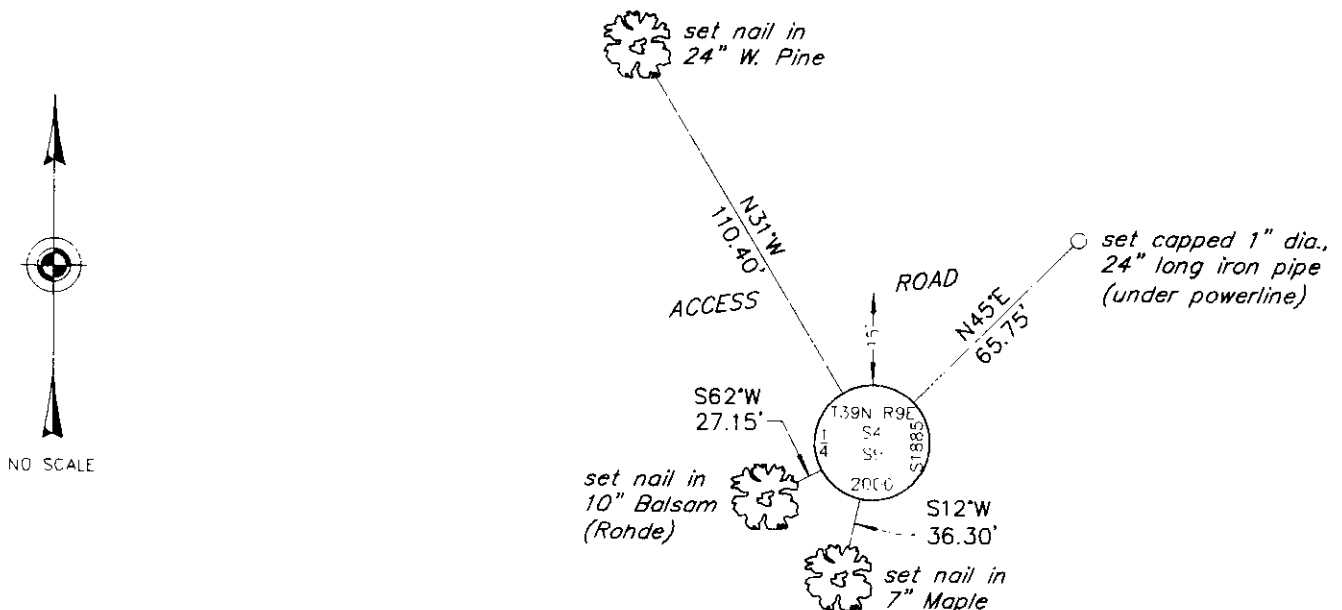
Maple 7 S68°W, 29 links
 Y. Pine 20 N85°E, 35 links

(b)(f)(g)(h) Description of monument found at this corner and if it was accepted, state all evidence (material, testimonial, occupational, plats, records, other monuments) used as a basis for accepting. If not accepted or if nothing was found, state evidence used as basis for establishing location. If reestablished through lost corner proportionate methods, indicate all monuments, distances and directions used to establish. Indicate type of monument and sign post found or set.

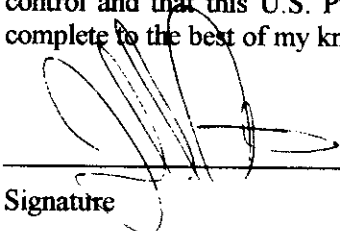
1979: Survey Map by Don Rohde, Registered Land Surveyor. Rohde indicates corner is marked by a 4" sq. concrete monument with the following bearing trees: 8" Maple East, 38.2 feet; 6" Fir S60°W, 27.07 feet.

June 12, 2000: I found and accepted a red "DEEP-1" magnet at the intersection of the bearing tree ties. I believe this magnet was set under the concrete monument by Rohde as a memorial. I found Rohde's Maple stump 8" S86°E, 38.2 feet. I replaced the magnet with a 2-½" dia., 30" long aluminum pipe with 3-¼" dia. Oneida County aluminum cap 3" above grade in a rock cairn and marked as shown below. I established accessories as shown below and set a plastic sign post Northeast, 1 foot.

(c)(d)(e) Plan view of corner with ties to at least 4 witness monuments. If in disagreement with previously established corner, show the distances between the two corners and also indicate the ties to the disputed corner.



(i) I, Jeffrey W. Austin, Registered Land Surveyor S-1885, hereby certify that the corner location on this record was determined by me or under my direction and control and that this U.S. Public Land Survey Monument Record is correct and complete to the best of my knowledge and belief.


 Signature

7 28 00
 Date



INDEX NO. E-11

3909040020