

U.S. PUBLIC LAND SURVEY MONUMENT RECORD

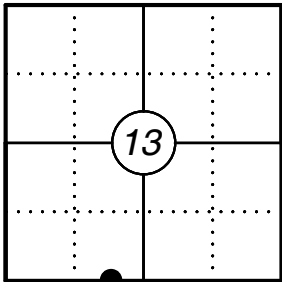
This form is intended and designed to fulfill all requirements of Wisconsin Administrative Code, Chapter A-E 7.08 U.S. Public Land Survey Monument Record (3) (a)(b)(c)(d)(e)(f)(g)(h)(i). An additional sheet may be added if necessary to confirm with said requirements.

Oneida County
Land Information Office
Filed
2/25/2025

(a) Corner Location:

Witness Meander Corner Section 13
Township 39 North
Range 09 East
Town of Sugar Camp
County of Oneida

Corner ID: 3909130026



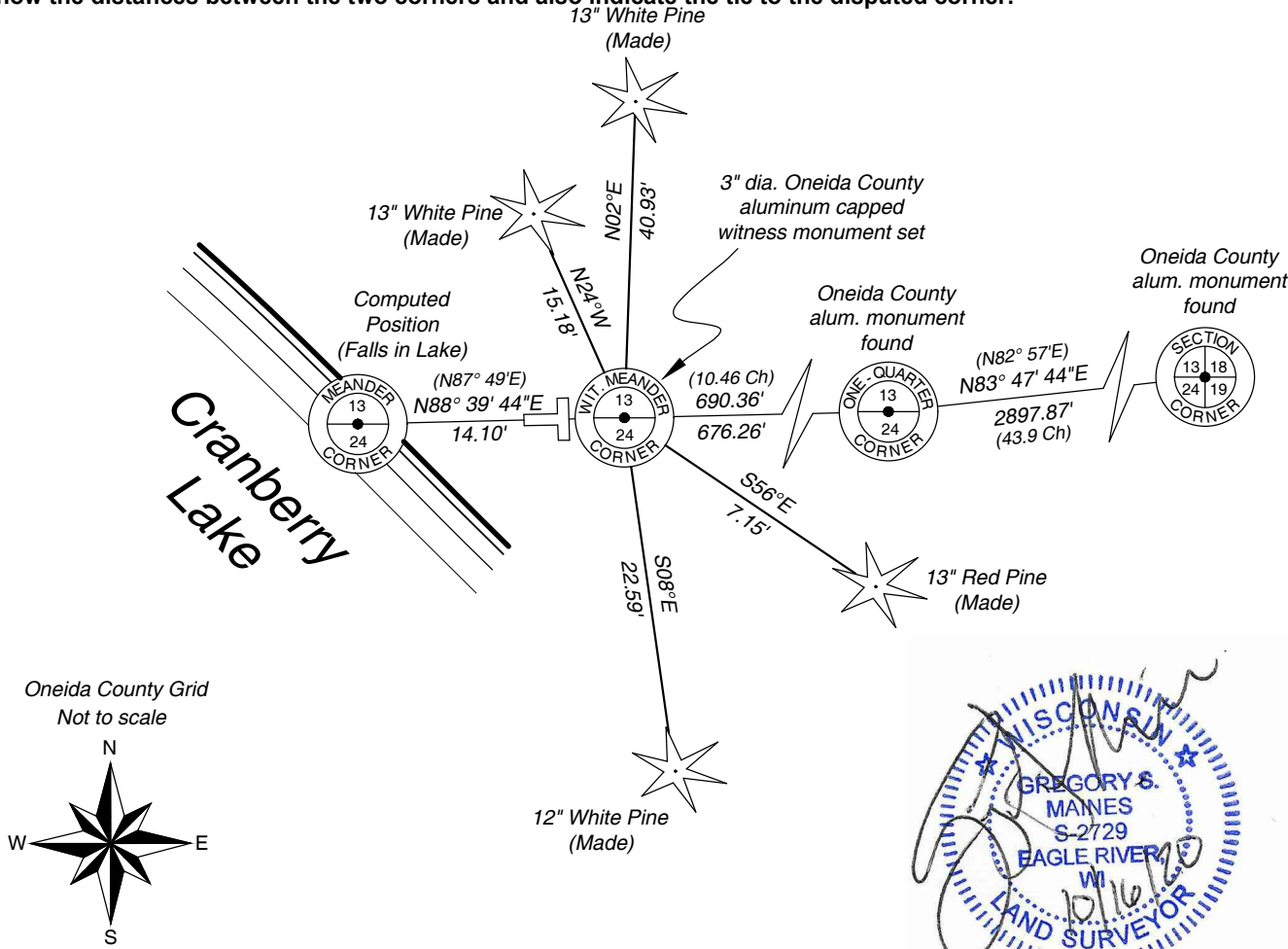
(b) History of Original Corner:

Original Surveyor: William Daugherty Original B.T.'s: White Pine 10 N10°W 2 lks
Date of Survey: September, 1863 White Pine 12 S6°W 3 lks

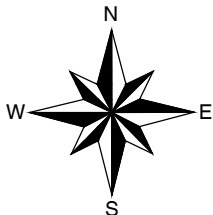
(f)(g)(h) Description of monument found at this corner and if it was accepted, state all evidence (material, testimonial, occupational, plats, records, other monuments) used as a basis for establishing location. If reestablishing through lost corner proportionate methods, indicate all monuments, distances, and directions used to establish. Indicate type of monument and sign post found or set.

07/31/1952 - F.R. Wincentsen County Surveyors notes on page 259 indicates N87° 01'E 29.70ch over lake to M.C. 5"x5" post, found original Gov't BT and old M.C. B.T.s W Pine 16 N77°E 7 lks; N Pine 6 S67°E 21.5 lks. Continues N87° 49'E 40.16 ch. 1/4 corner.
05/06/2020 - I did not find anything at the corner location, therefore I set corner based on measurements as shown on page 259 of F.R. Wincentsen County Surveyors notes. I set a 3" dia Oneida County capped aluminum monument for a witness to the corner since the original position now falls in the lake and I witnessed the witness corner as shown below.

(c)(d)(e) Plan view of corner with ties to at least four witnesses. If in disagreement with previously established corner, show the distances between the two corners and also indicate the tie to the disputed corner.



Oneida County Grid
Not to scale



* Vinyl "T" post 1.0'
west of alum. witness
monument.

* Distances to bearing
trees are to nail in side.

Certification

I, Gregory S. Maines, Professional Land Surveyor No. 2729, hereby certify that the corner location on this record was referenced by me or under my direction and control and that this U.S. Public Land Survey Monument Record is complete to the best of my knowledge and belief. REF: 2020076