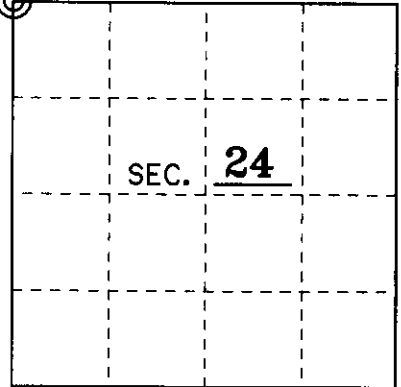


U.S. PUBLIC LAND SURVEY MONUMENT RECORD

Note: This form is intended and designed to fulfill all requirements of Wisconsin Administrative Code, Chapter A-E 7.08 U.S. Public Land Monument Record (3)(a)(b)(c)(d)(e)(f)(g)(h)(i). An additional sheet may be added if necessary to conform with said requirements.

(a) CORNER LOCATION: NORTHWEST County or State Plane Coordinates
 _____ Corner of Section 24 Northing _____
 Township 39 North Easting _____
 Range 9 East Datum Base _____
 Township/City Sugar Camp County of ONEIDA



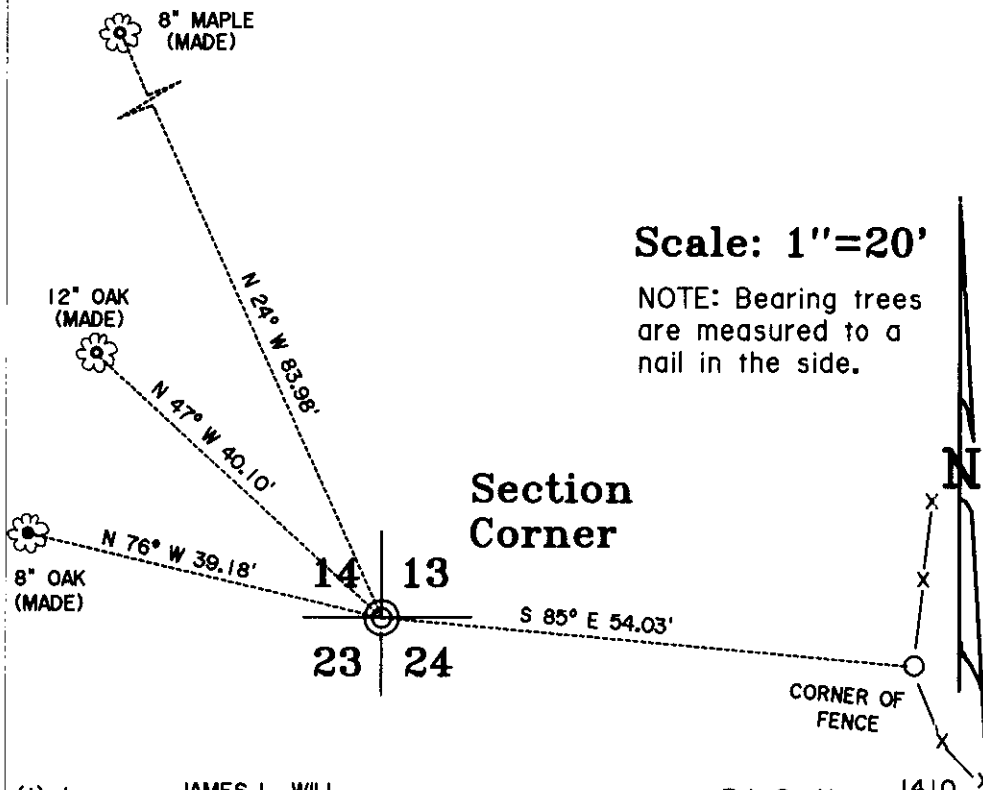
(b) HISTORY OF ORIGINAL CORNER ESTABLISHMENT Original B.T.'s
 Original Surveyor: William E. Daugherty 10" ASPEN S 53° W 11 LKS.
 Date of Survey: September 1863 10" ASPEN N 53° E 28 LKS.

(b)(f)(g)(h) Description of monument found at this corner and if it was accepted, state all evidence (material, testimonial, occupational, plats, records, other monuments) used as a basis for accepting. If not accepted or if nothing was found, state evidence used as basis for establishing location. If reestablished through lost corner proportionate methods, indicate all monuments, distances and directions used to establish. Indicate type of monument and sign post found or set.

IN 1972 ROBERT ILG OF THE DNR REPLACED MAINE'S AND GRIFFIN'S IRON PIPE WITH A WCD IRON PIPE BRASS CAPPED MONUMENT AND MADE THE FOLLOWING B.T.'S: 8" HARD MAPLE N 36° E 0.86 CHAINS, 6" W. BIRCH S 62° W 0.248 CHAINS AND A 9" W. BIRCH N 36° W 0.282 CHAINS.

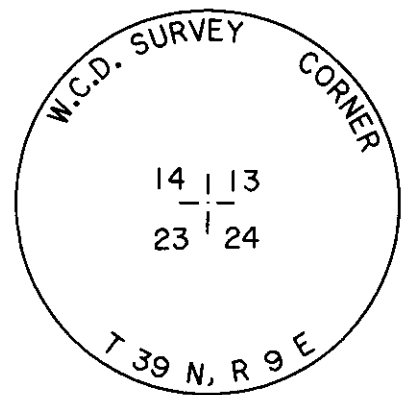
I, JAMES L. WILL, ON 12-12-2001, FOUND ILG'S WCD MONUMENT AND SIGN POST 1 FOOT NORTH OF MONUMENT. FOUND NONE OF ILG'S B.T.'S. MADE NEW B.T.'S AS SHOWN BELOW.

(c)(d)(e) Plan view of the corner with ties to at least 4 witness monuments. If in disagreement with previously established corner, show the distances between the two corners and also indicate the ties to the disputed.



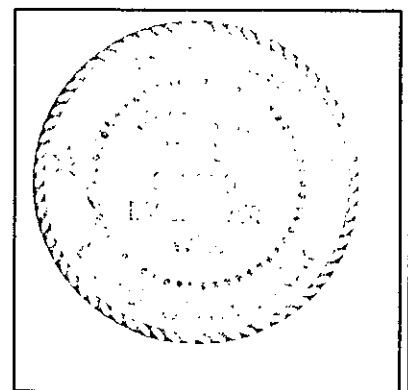
Scale: 1"=20'

NOTE: Bearing trees are measured to a nail in the side.



(i) I, JAMES L. WILL R.L.S. No. 1410
 hereby certify that the corner location on this record was determined by me or under my direction and control and that this U.S. Public Land Survey Monument Record is correct and complete to the best of my knowledge and belief.

Signature *J. L. Will* Date 12/12/2001



Index No. N-21

3909140000