



CERTIFIED LAND CORNER RESTORATION

State of Wisconsin }
County of ONEIDA } ss.

I, WILLIAM IMMICH, do hereby certify that on the 30 day of MAY, 19 83, I found evidence of the EAST 1/4 corner of SECTION 21 Township 39 NORTH, Range 9 EAST, Fourth Principal Meridian, as described hereon; and that from this evidence I established a new monument and accessories as described hereon to perpetuate the original location of this corner:

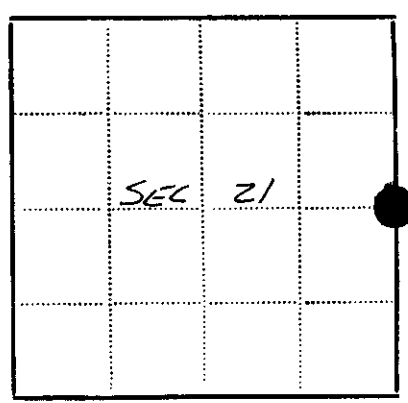
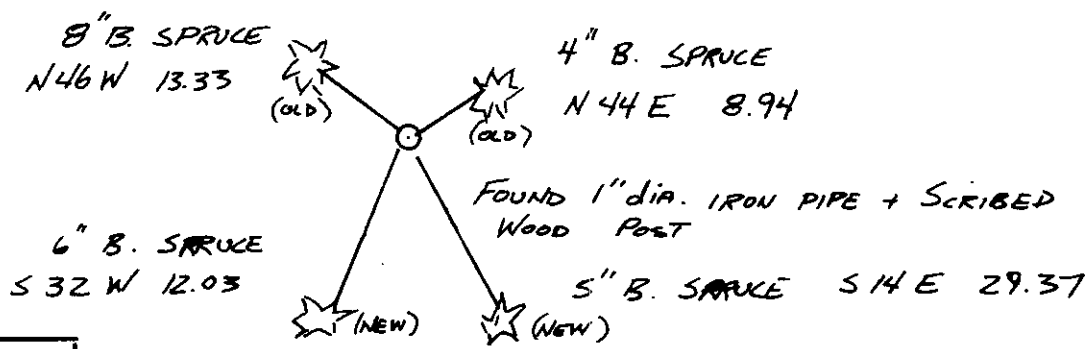
Description of original monument and accessories and subsequent restorations:

APRIL 1863 Wm. E. Daugherty Gait Survey ran NORTH BETWEEN 21 + 22 40.00 ch. SET POST TAM 6 S23 E 8 TAM 6 N84 W 10
D.H. VAUGHN JUNE 1902 AT WEST 1/4 SEC 22 (DORR'S CORNER) O.K.

Description of corner evidence found:

F.R. WINKENTZIN Nov. 1948 Found 5x5 post B.T. SPRUCE 8" N 75 W 31k (GENISOT DWG 460-2)
L.J. Schmit MARCH 1973 Shows IRON PIPE AT 1/4 CORNER ran WEST FROM CORNER (GENISOT DWG 4932)
WM. IMMICH - FOUND 1" DIA IRON PIPE + SCRIBED WOOD POST - FIT F.R.W. MAP + L.J.S. MAP GOOD. PIPE IN GOOD CONDITION MADE BEARING TREES BELOW. (GENISOT DWG 7469)

Description of monument and accessories I established to perpetuate the location of this corner: [FOUND PERPETUATED CORNER.]
DISTANCE TO NAIL IN SIDE OF TREE
BEARINGS HAND COMPASS
LINES CUT - N-S-E-W FROM CORNER



● - Corner monument restored
□ -

Resident witnesses.....

Dated at RHINELANDER Wisconsin, this 6 day of JUNE 1983.

Signature William Immich Title R.L.S.
(County Surveyor, Registered Land Surveyor, or other duly authorized official)

Surveyors Registration No. 1383

Office of..... County of.....

I hereby certify that the within instrument was filed in this office for record on the..... day of..... 19....., and was filed in Book No..... Page No..... of County Records.

Signature..... Title.....

Township 39 NORTH, Range 9 EAST, Section 21, Index No....., Page No.....

3909212000

P-13