

U.S. PUBLIC LAND SURVEY MONUMENT RECORD

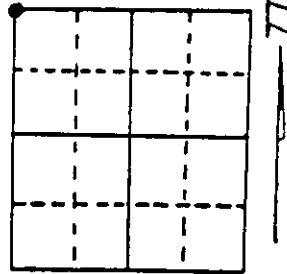
Note: This form is intended and designed to fulfill all requirements of Wisconsin Administrative Code, Chapter A-E 7.08 U.S. Public Land Survey Monument Record (3) (a) (b) (c) (d) (e) (f) (g) (h) (i). An additional sheet may be added if necessary to conform with said requirements.

(a) Corner location: Township 39 North

Range 10 East

Town/City/Village Sugar Camp

County Oneida



Section 31

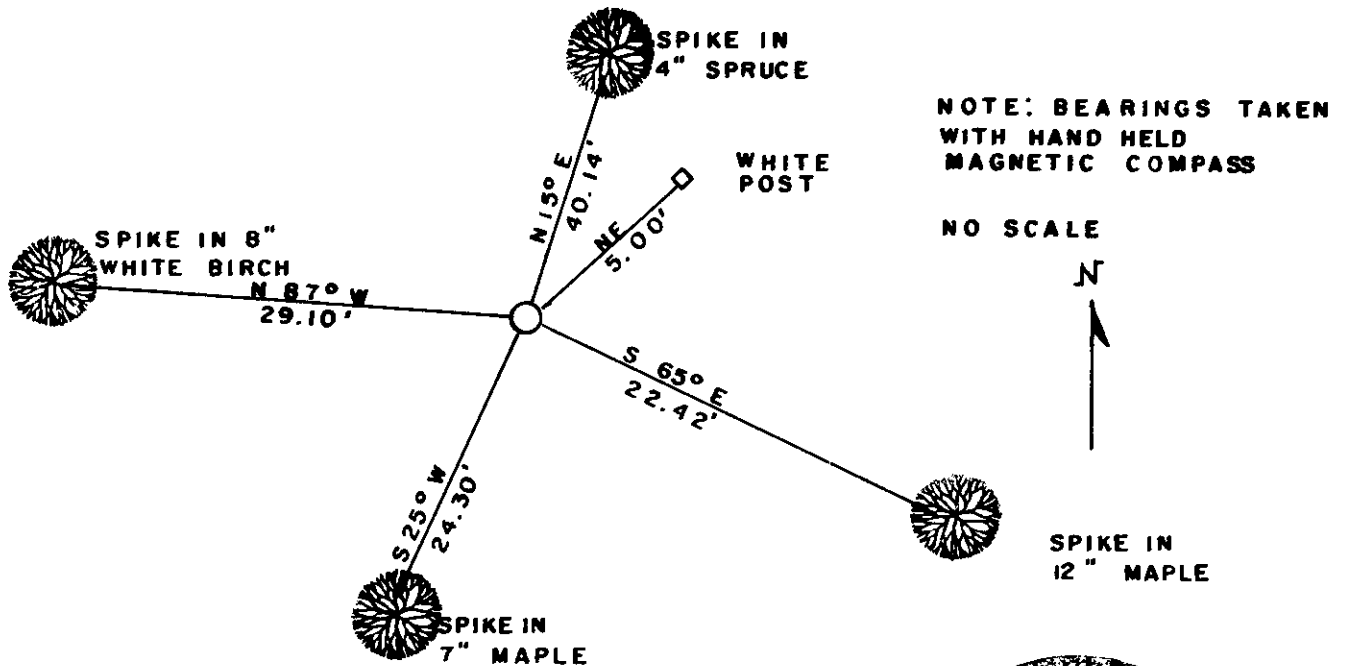
(b) (f) (g) (h) Description of monument found at this corner and if it was accepted, state all evidence (material, testimonial, occupational, plats, records, other monuments) used as a basis for accepting. If not accepted or if nothing was found, state evidence used as basis for establishing location. If reestablished through lost corner proportionate methods, indicate all monuments, distances and directions used to establish. Indicate type of monument found or set and sign post.

1863-Anderson set post 12" Birch S 79 degrees West 22 Links
 10" Birch North 78 degrees West 33 Links 12" Birch North
 13 degrees East 34 Links 18" Sugar Maple South 77 degrees
 East 20 Links

1956-Old corner replaced by Ripco Iron pipe with brass cap

1993-William E. Bandow found Ripco's brass cap and witnessed
 as shown below

(c) (d) (e) Plan view of corner with ties to at least 4 witness monuments. If in disagreement with previously established corner, show the distances between the two corners and also indicate the ties to the disputed corner.



NOTE: BEARINGS TAKEN WITH HAND HELD MAGNETIC COMPASS

NO SCALE

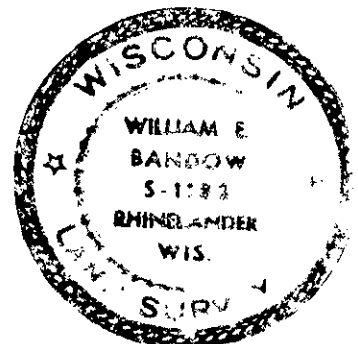


(i) I, William E. Bandow
 (type or print name) certify that the corner location on this record was determined by me or under my direction and control and that this U.S. Public Land Survey Monument Record is correct and complete to the best of my knowledge and belief.

William E. Bandow 3-11-93

Signature

Date



Index No. V-1

Stamp
3909250000