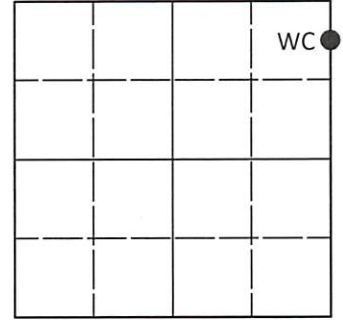


U.S. PUBLIC LAND SURVEY MONUMENT RECORD

Note: This form is intended and designed to fulfill all requirements of Wisconsin Administrative Code, Chapter A-E 7.08 U.S. Public Land Survey Monument Record (3)(a-i).

(a) CORNER LOCATION
 Witness Cor. of Secs. 28 & 29
 Township 39 North
 Range 9 East of the 4th P.M.
 Town of Sugar Camp
 County of Oneida

WISCRS - Oneida County
 N: 239,296.81 USft
 E: 270,580.12 USft
 Datum: NAD 83(2011) ep. 2010.00
 GNSS Method: RTN - Offset
 GNSS Control: WISCORS VRS



Sec. 29, T. 39 N., R. 9 E.

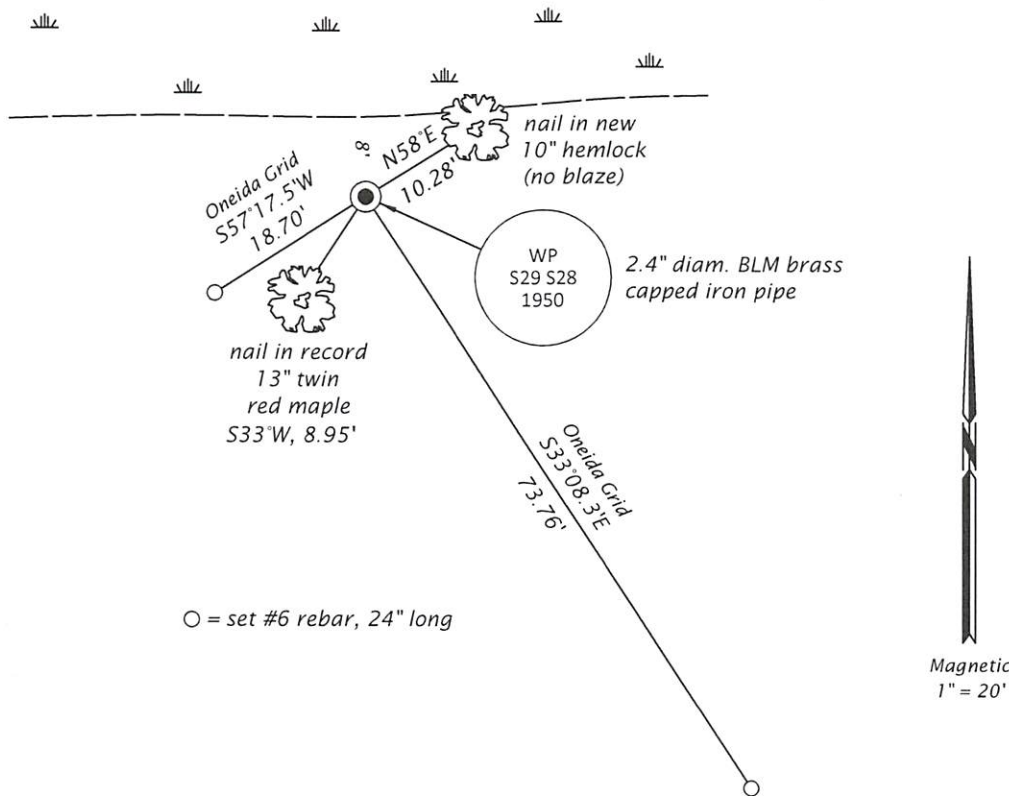
(b)(f)(g)(h) Description of monument found at this corner and if it was accepted, state all evidence (material, testimonial, occupational, plats, records, other monuments) used as a basis for accepting. If not accepted or if nothing was found, state evidence used as basis for establishing location. If re-established through lost corner proportionate methods, indicate all monuments, distances and directions used to establish. Indicate type of monument and sign post found or set.

August, 1950: BLM Dependent Resurvey by Hugh B. Crawford, Associate Cadastral Engineer. North between Secs. 28 and 29, at 52.65 chs. set a 2" brass capped iron pipe witnessed by: maple 7 S44°E, 38 lks.; maple 7 S32.5°W, 13.5 lks.

July 18, 2023: I found and accepted the record monument, a 2.4" diam. iron pipe, firmly set, with a 3.3" diam. BLM brass cap projecting 4" above the ground surface. The record bearing tree at S44°E is standing dead. I found or established accessories as indicated below. I found a white vinyl sign post bearing North, 1.0 ft.

The coordinate value shown has been determined by traversing from two or more GNSS offset points satisfying the accuracy requirements defined and qualified in the 2022 Oneida County Fee Schedule for USPLS Corners.

(c)(d)(e) Plan view of corner with ties to at least 4 witness monuments. If in disagreement with previously established corner, show the distances between the two corners and also indicate the ties to the disputed.



REGISTER OF DEEDS OFFICE
 ONEIDA COUNTY
 FILED

AUG 07 2023

KYLE J. FRANSON
 REGISTER OF DEEDS

(i) I, Jeffrey W. Austin, Professional Land Surveyor No. S-1885, hereby certify that the corner location on this record was determined by me or under my direction and control and that this U.S. Public Land Survey Monument Record is correct and complete to the best of my knowledge and belief.

[Handwritten Signature]

AUG. 1, 2023

Signature Date