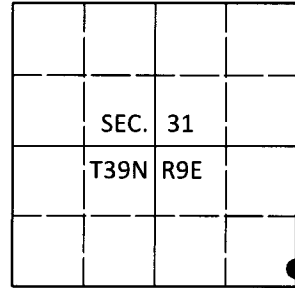


**U.S. PUBLIC LAND SURVEY MONUMENT RECORD**

Note: This form is intended and designed to fulfill all requirements of Wisconsin Administrative Code, Chapter A-E 7.08 U.S. Public Land Survey Monument Record (3)(a-i).

(a) CORNER LOCATION  
 Wit. Meander Cor. of Secs. 31 & 32  
 Township 39 North  
 Range 9 East of the 4th P.M.  
 Town of Sugar Camp  
 County of Oneida

WISCORS - Oneida County  
 N: 230,773.19 USft  
 E: 265,592.26 USft  
 Datum: NAD 83(2011)  
 GNSS Method: RTN - Offset  
 GNSS Control: WISCORS VRS



(b) HISTORY OF ORIGINAL CORNER ESTABLISHMENT

Original Surveyor: William Daugherty

Original Accessories:

Date of Survey      Commenced: Sep., 1863  
 Completed: Sep., 1863

Y. Pine 12" N53°W, 20 lks.  
 Hemlock 12" S21°E, 19 lks.

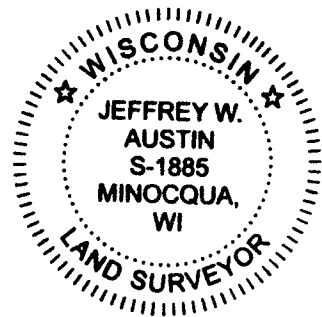
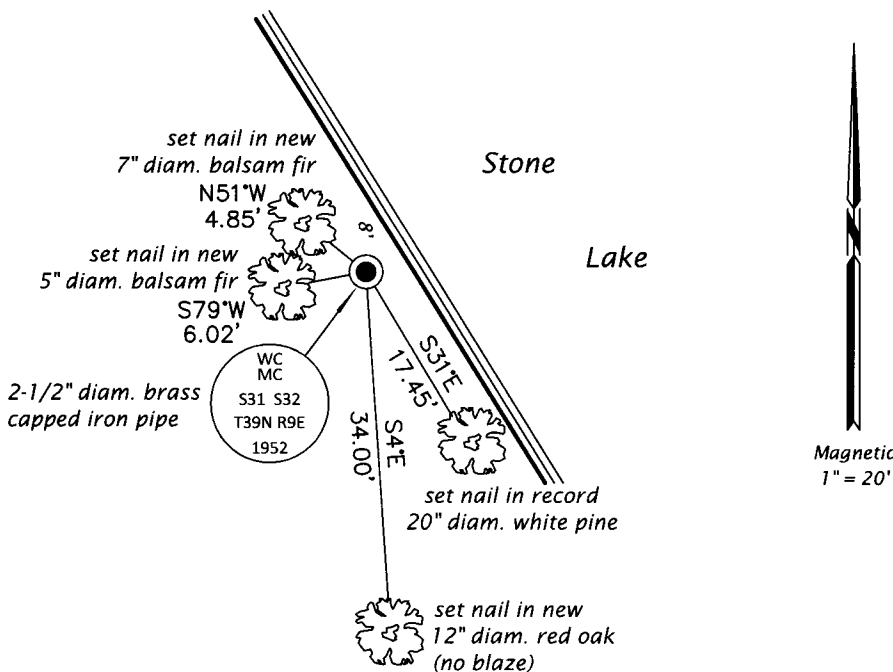
(b)(f)(g)(h) Description of monument found at this corner and if it was accepted, state all evidence (material, testimonial, occupational, plats, records, other monuments) used as a basis for accepting. If not accepted or if nothing was found, state evidence used as basis for establishing location. If re-established through lost corner proportionate methods, indicate all monuments, distances and directions used to establish. Indicate type of monument and sign post found or set.

*Aug. - Oct., 1952: BLM Dependent Resurvey by Hugh Crawford, Cadastral Engineer (see OCS No. L-517). A 2-1/2" diam. brass-capped iron post was set as a witness to the proportioned meander corner location. Accessories: white pine 9" S29°E, 27 lks.; balsam 5" N79°W, 22.5 lks.*

*Jan. 5, 2019: I found and accepted the record monument, a 2-1/2" diam. iron pipe with a 3-1/4" diam. BLM brass cap projecting 1" above the ground surface. The record fir bearing tree is gone. I found or established accessories as shown below. I was unable to set a sign post due to frost.*

*The coordinate value shown has been verified by at least one of the following methods: 1) comparison to a previously GPS determined published value; 2) the value is the average of two or more GPS observations at a markedly different time; 3) one or more distances were measured back to the GPS observed corner from temporary GPS observed offset locations.*

(c)(d)(e) Plan view of corner with ties to at least 4 witness monuments. If in disagreement with previously established corner, show the distances between the two corners and also indicate the ties to the disputed.



REGISTER OF DEEDS OFFICE  
 ONEIDA COUNTY  
 FILED

FEB 19 2019

KYLE J. FRANSON  
 REGISTER OF DEEDS

(i) I, Jeffrey W. Austin, Professional Land Surveyor No. S-1885, hereby certify that the corner location on this record was determined by me or under my direction and control and that this U.S. Public Land Survey Monument Record is correct and complete to the best of my knowledge and belief.

*[Handwritten Signature]*  
 Signature

1 FEB 2019  
 Date