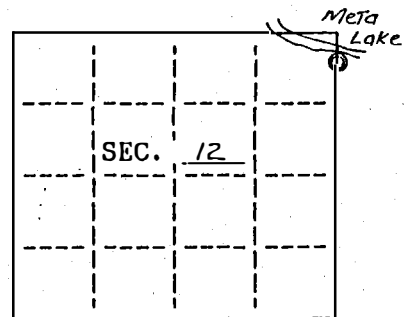


COPY From Vilas Cty

U.S. PUBLIC LAND SURVEY MONUMENT RECORD

Note: This form is intended and designed to fulfill all requirements of Wisconsin Administrative Code, Chapter A-E 7.08 U.S. Public Land Survey Monument Record (3)(a)(b)(c)(d)(e)(f)(g)(h)(i). An additional sheet may be added if necessary to conform with said requirements.

(a) CORNER LOCATION: State Plane Coordinates
Meander corner of Sec. 12 X _____
Township 39 North Y _____
Range 10 East Datum Base _____
Town/City Lincoln County of Vilas



(b) HISTORY OF ORIGINAL CORNER ESTABLISHMENT
Original B.T.'s
Original Surveyor: W.C. Fellows

Date of Survey: Commenced July 1859 12" Hemlock S29°E 24 links
Completed July 1859 10" Birch S58°W 21 links

(b)(f)(g)(h) Description of monument found at this corner and if it was accepted, state all evidence (material, testimonial, occupational, plats, records, other monuments) used as a basis for accepting. If not accepted or if nothing was found, state evidence used as basis for establishing location. If reestablished through lost corner proportionate methods, indicate all monuments, distances and directions used to establish. Indicate type of monument and sign post found or set.

Nov. 3, 1971 L.W. Scott Surveyor found iron pipe in place.

BT's indicated: 8" N. Pine S 53°W, 23.6 feet

24" N. Pine N 35°W, 6.7 feet

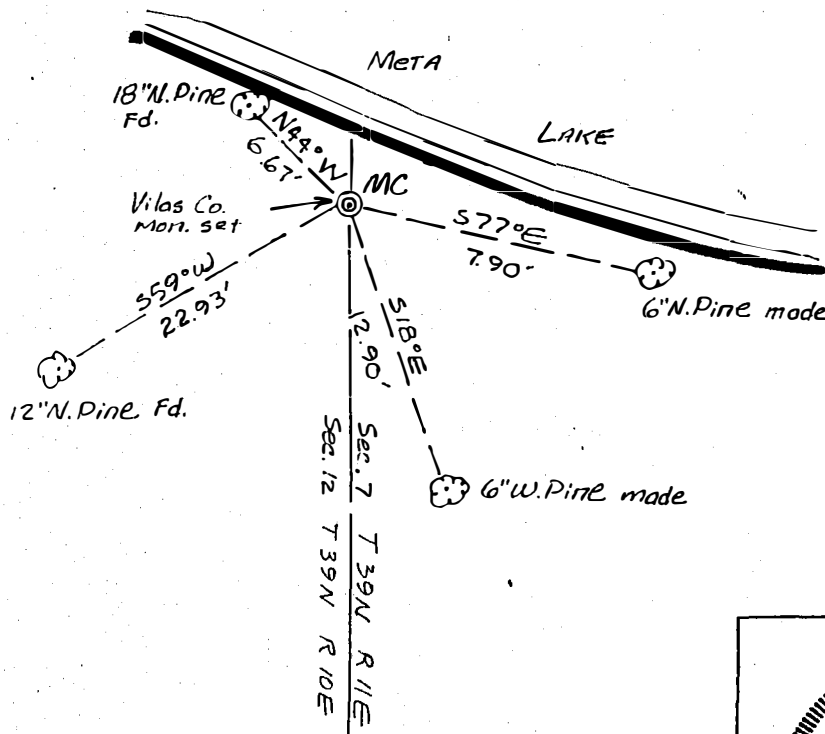
Sept. 18, 1979 James Will found 1" iron pipe in place.

Replaced iron pipe with 2½"X30" Vilas County Alum. capped monument.

Found Scott's Bearing trees and made 2 new bearing trees as indicated below.

Set carsonite sign post north 0.5 feet.

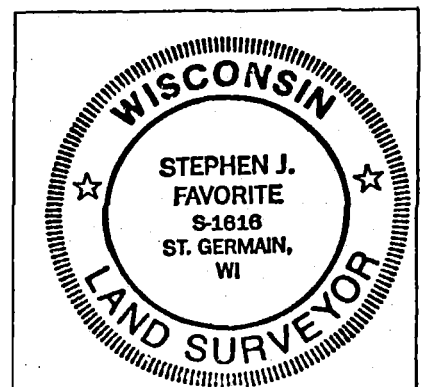
(c)(d)(e) Plan view of corner with ties to at least 4 witness monuments. If in disagreement with previously established corner, show the distances between the two corners and also indicate the ties to the disputed.



Not to Scale

(i) I, Stephen J. Favorite RLS #S-1616 hereby certify that the corner location on this record was determined by me or under my direction and control and that this U.S. Public Land Survey Monument Record is correct and complete to the best of my knowledge and belief.

Signature Stephen J. Favorite Date 3/31/74



INDEX NO. E-E-25

3910123700

COPY from Vilas Cty

U.S. PUBLIC LAND SURVEY MONUMENT RECORD

Note: This form is intended and designed to fulfill all requirements of Wisconsin Administrative Code, Chapter A.R. 7.08 U.S. Public Land Survey Monument Record (3)(a)(b)(c)(d)(e)(f)(g)(h)(i). An additional sheet may be added if necessary to conform with said requirements.

(a) CORNER LOCATION:

State Plane Coordinates

Meander corner of Sec. 12

X _____

Township 39 North

Y _____

Range 10 East

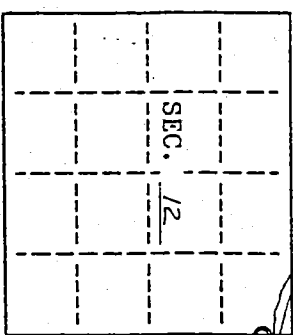
Datum Base _____

Town/City Lincoln

County of Vilas

(b) HISTORY OF ORIGINAL CORNER ESTABLISHMENT

Original B.T.'s



Original Surveyor: W.C. Fellows

Date of Survey: Commenced July 1859

12" Hemlock S290E 24 links

Completed July 1859

10" Birch S580W 21 links

(b)(f)(g)(h) Description of monument found at this corner and if it was accepted, state all evidence (material, testimonial, occupational, plats, records, other monuments) used as a basis for accepting. If not accepted or if nothing was found, state evidence used as basis for establishing location. If reestablished through lost corner proportionate methods, indicate all monuments, distances and directions used to establish. Indicate type of monument and sign post found or set.

Nov. 3, 1971 L.W. Scott Surveyor found iron pipe in place.
BT's indicated: 8" N. Pine S 530W, 23.6 feet
24" N. Pine N 350W, 6.7 feet

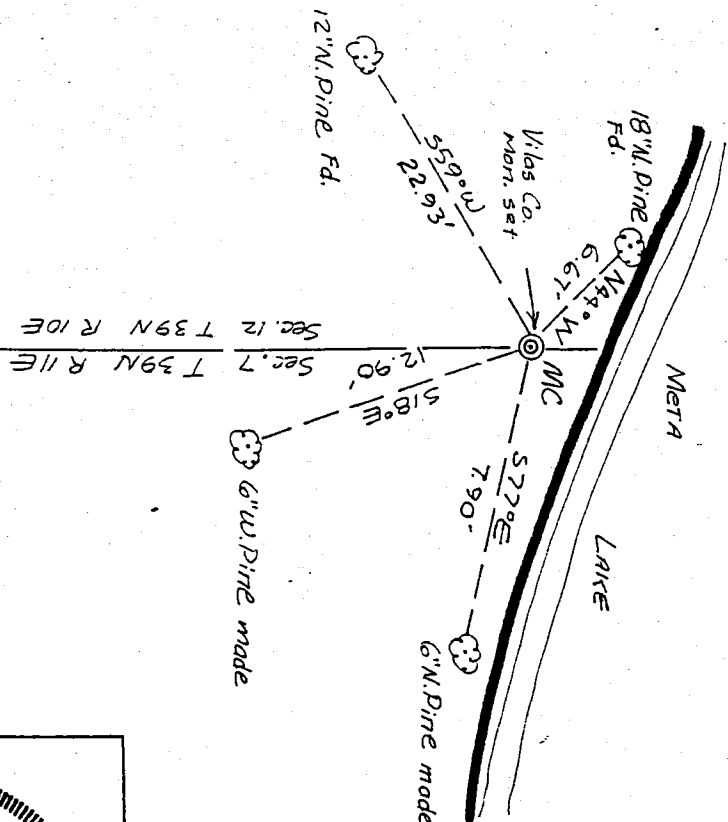
Sept. 18, 1979 James Will found 1" iron pipe in place.

Replaced iron pipe with 2 1/2" X 30" Vilas County Alum. capped monument.

Found Scott's Bearing trees and made 2 new bearing trees as indicated below.

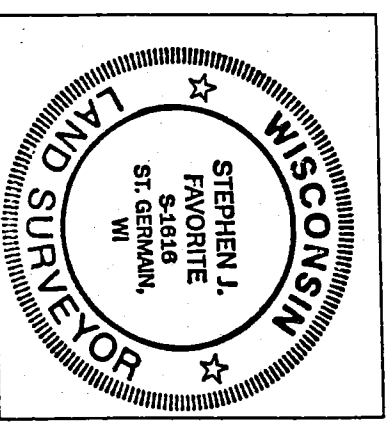
Set carsonite sign post north 0.5 feet.

(c)(d)(e) Plan view of corner with ties to at least 4 witness monuments. If in disagreement with previously established corner, show the distances between the two corners and also indicate the ties to the disputed.



Not to Scale

(i) I, Stephen J. Favorite, RLS #S-1616 hereby certify that the corner location on this record was determined by me or under my direction and control and that this U.S. Public Land Survey Monument Record is correct and complete to the best of my knowledge and belief.



Signature

Stephen J. Favorite

Date 3/31/94

INDEX NO. E, F-25

3910123700