

U.S. PUBLIC LAND SURVEY MONUMENT RECORD

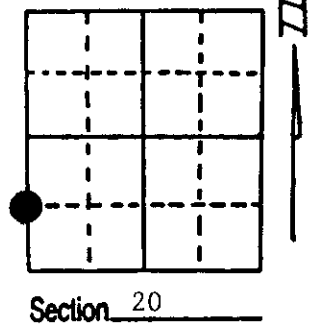
Note: This form is intended and designed to fulfill all requirements of Wisconsin Administrative Code, Chapter A-E 7.08 U.S. Public Land Survey Monument Record (3) (a) (b) (c) (d) (e) (f) (g) (h) (i). An additional sheet may be added if necessary to conform with said requirements.

(a) Corner location: Township 39 North

Range 10 East/West

Town/City/Village Sugar Camp

County Oneida



(b) (f) (g) (h) Description of monument found at this corner and if it was accepted, state all evidence (material, testimonial, occupational, plats, records, other monuments) used as a basis for accepting. If not accepted or if nothing was found, state evidence used as basis for establishing location. If reestablished through lost corner proportionate methods, indicate all monuments, distances and directions used to establish. Indicate type of monument found or set and sign post.

12/12/1958 - Norm Loftus established this corner and set a 3/4" x 24" high iron pipe/brass plate with two BTs:

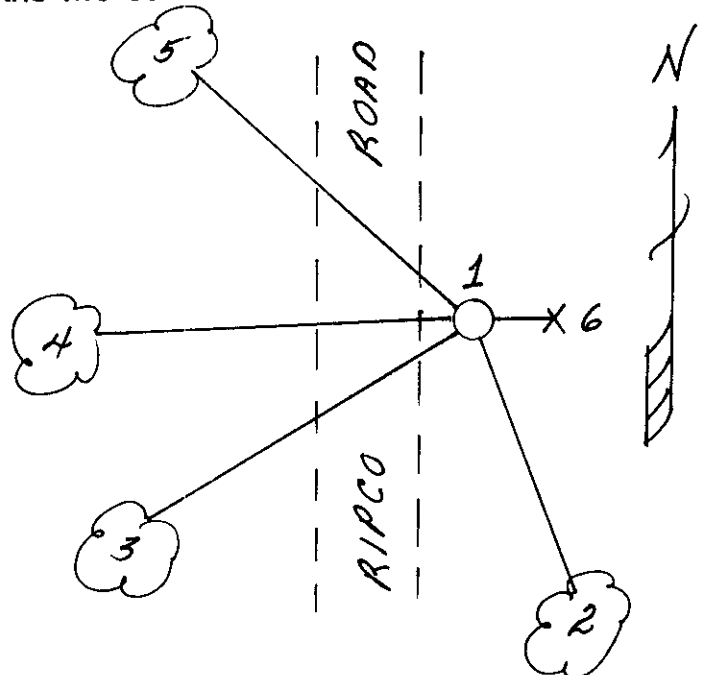
14" White Birch, S22°E, 25.04' 7" Twin White Birch, N30°E, 11.22'

5/23/1995 - Milo E. Stefan found Ripco's iron pipe with SE BT in good condition. NE BT has been rooted out with road construction. We made three new BTs and set plastic sign post.

(c) (d) (e) Plan view of corner with ties to at least 4 witness monuments. If in disagreement with previously established corner, show the distances between the two corners and also indicate the ties to the disputed corner.

- 1) 3/4" x 24" iron pipe/brass cap
- 2) 14" White Birch, S22°E, 25.04'
- 3) 8" Cedar, S70°W, 88.32'
- 4) 16' Hemlock, S88°W, 83.80'
- 5) 10" Hemlock, N53°W, 94.05'
- 6) Plastic Sign Post, East, .2'

Distances to nail in side of BTs.
Stump blaze scribed BT.
BT tags to face of each BT.



REGISTER OF DEEDS OFFICE
ONEIDA COUNTY WIS
FILED
JUL 11 1995
At _____ O'Clock _____ M
THOMAS H. LEIGHTON
REGISTER OF DEEDS

(i) I, Milo E. Stefan
(type or print name) certify that the corner location on this record was determined by me or under my direction and control and that this U.S. Public Land Survey Monument Record is correct and complete to the best of my knowledge and belief.



Milo E. Stefan
Signature

July 10, 1995
Date

3910191000

Index No. 0-5

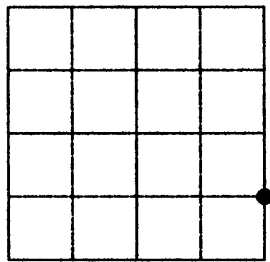
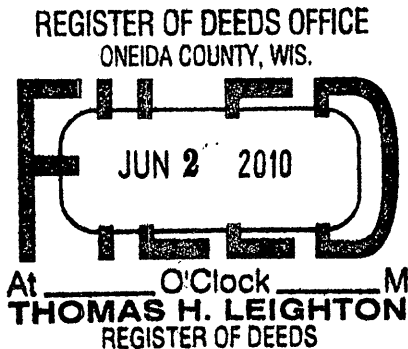
U.S. PUBLIC LAND SURVEY MONUMENT RECORD

Note: This form is intended and designed to fulfill all requirements of the Wisconsin Administrative Code, Chapter A-E 7.08 U.S. Public Land Monument Record (3)(a)(b)(c)(d)(e)(f)(g)(h)(i). An additional sheet may be added if necessary to conform with said requirements.

(a) CORNER LOCATION: Oneida County Corner I.D. No.:

South 1/16 Corner, East Line, Sec. 19 3910191000

Township 39 North
Range 10 East
Town of Sugar Camp
County of Oneida



SECTION 19

(f)(g)(h) DESCRIPTION OF MONUMENT FOUND AT THIS CORNER AND IF IT WAS ACCEPTED, STATE ALL EVIDENCE (MATERIAL, TESTIMONIAL, OCCUPATIONS, PLATS, RECORDS, OTHER MONUMENTS) USED AS A BASIS FOR ESTABLISHING LOCATION. IF NOT ACCEPTED IF NOTHING WAS FOUND, STATE EVIDENCE USED AS BASIS FOR ESTABLISHING LOCATION. IF REESTABLISHED THROUGH LOST CORNER PROPORTIONATE METHODS, INDICATE ALL MONUMENTS, DISTANCES AND DIRECTIONS USED TO ESTABLISH. INDICATE TYPE OF MONUMENT AND SIGN POST FOUND OR SET.

12/12/1958 - Norm Loftus established this corner and set 3/4" x 24" high iron pipe with 4" x 4" brass plate with two BTs: 14" White Birch, S22°E, 25.04' 7" Twin white birch, N30°E, 11.22'

5/23/1995 - Milo E. Stefan found Ripco monument with SE BT in good condition. NE BT has been rooted out with road construction. Made three new BTs and set plastic sign post.

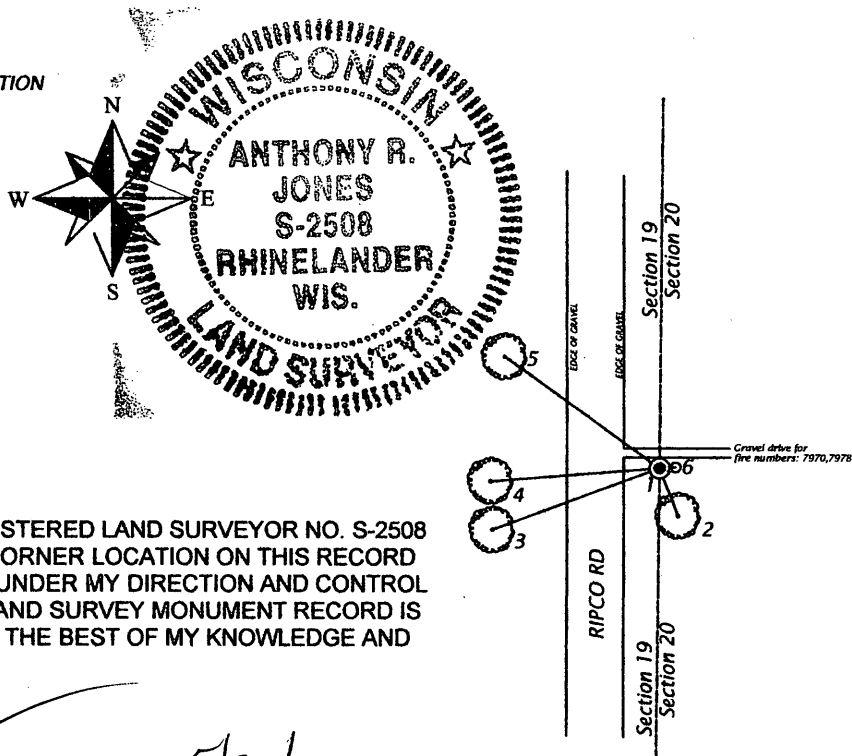
5/13/2010 - Anthony R. Jones found Ripco monument by Loftus and ties as set by Stefan in 1995 and re-measured ties as shown in the plan below. Also added one tie (1 1/4" I.P.) This mark is not in danger of road resurfacing at the time of this survey.

(c)(d)(e) PLAN VIEW OF CORNER WITH TIES TO AT LEAST 4 WITNESS MONUMENTS. IF IN DISAGREEMENT WITH PREVIOUSLY ESTABLISHED CORNER, SHOW THE DISTANCE BETWEEN THE TWO CORNERS AND ALSO INDICATE THE TIES TO THE DISPUTED CORNER.

BEARINGS BASED ON THE WEST LINE
IF THE SE/SE OF SECTION 19-39-10
AND ONEIDA COUNTY GPS INFORMATION
ACCEPTED AS: N 00°38'44" E.

- 1: FD 3/4" IP WITH SQ. BRASS PLATE
- 2: 16" WHITE BIRCH, N 21°02'20" E, 25.43' (25.04')
- 3: 12" CEDAR, S 69°35'08"W, 88.02' (88.32')
- 4: 18" HEMLOCK, S 85°30'37" W, 83.55' (83.55')
- 5: 12" HEMLOCK, N 54°04'35" W, 94.18' (94.05')
- 6: FOUND 1 1/4" IRON PIPE, N 85°35'11" E, 4.36'

Found plastic post 1' east
Measurement to trees taken to 8d aluminum nail in the side of tree.
Bearing taken to center of trees.



(i) I, ANTHONY R. JONES, REGISTERED LAND SURVEYOR NO. S-2508 HEREBY CERTIFY THAT THE CORNER LOCATION ON THIS RECORD WAS DETERMINED BY ME OR UNDER MY DIRECTION AND CONTROL AND THAT THIS U.S. PUBLIC LAND SURVEY MONUMENT RECORD IS CORRECT AND COMPLETE TO THE BEST OF MY KNOWLEDGE AND BELIEF.

SIGNATURE _____ DATE 5/20/10

INDEX NO. 95

1 of 2
3910191000

