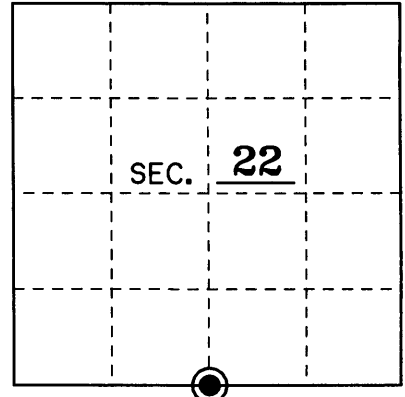


U.S. PUBLIC LAND SURVEY MONUMENT RECORD

Note: This form is intended and designed to fulfill all requirements of Wisconsin Administrative Code, Chapter A-E 7.08 U.S. Public Land Monument Record (3)(a)(b)(c)(d)(e)(f)(g)(h)(i). An additional sheet may be added if necessary to conform with said requirements.

(a) CORNER LOCATION: South County or State Plane Coordinates
1/4 Corner of Section 22 Northing _____
 Township 39 North Easting _____
 Range 10 East Datum Base _____
 Township/City Sugar Camp County of VILAS



(b) HISTORY OF ORIGINAL CORNER ESTABLISHMENT Original B.T.'s
 Original Surveyor: William E. Daugherty 10" Tamarack S 5°W 15 Lks.
 Date of Survey: Sept-Oct 1863 8" Spruce N 50°E 15 Lks.

(b)(f)(g)(h) Description of monument found at this corner and if it was accepted, state all evidence (material, testimonial, occupational, plats, records, other monuments) used as a basis for accepting. If not accepted or if nothing was found, state evidence used as basis for establishing location. If reestablished through lost corner proportionate methods, indicate all monuments, distances and directions used to establish. Indicate type of monument and sign post found or set.

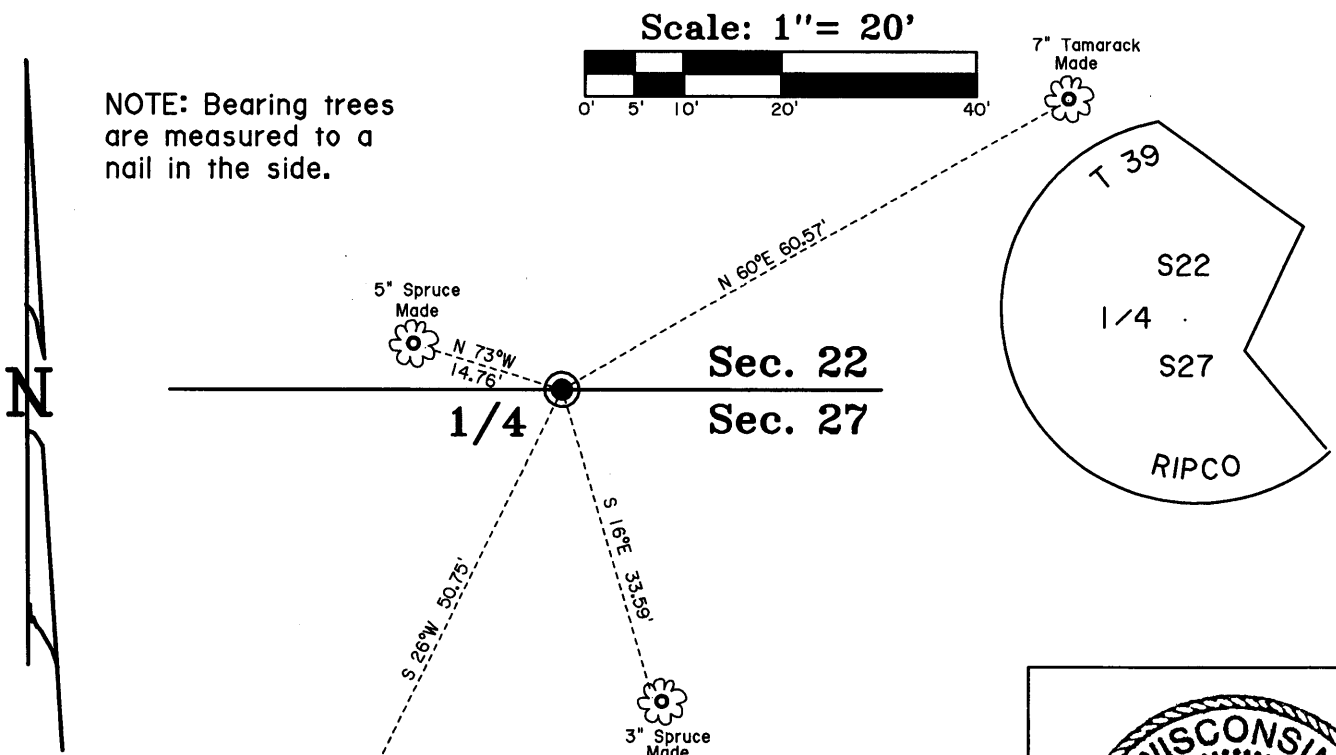
Sept., 1863: William E. Daugherty set a wood post for the original corner in his survey of T 39 N, R 10 E. He also made two B.T.'s as shown above.

1-3-1955: Ripco calls for a 1" iron pipe and a wood stake at the S1/4 of Section 22 in their notes for the bog survey.

3-8-1961: Ripco replaced the 1" iron pipe with a 1-1/2" capped iron pipe for the new 1/4 corner there is no mention of B.T.'s. VCF #A420.

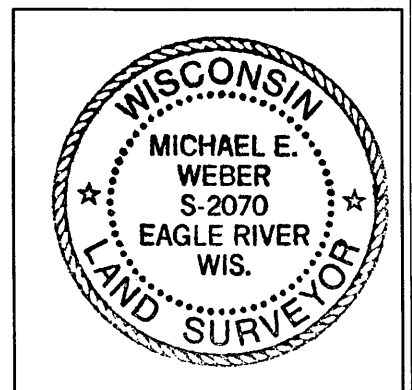
8-15-2007: I, Michael E. Weber, found a 1-1/2" capped iron pipe lying on its side, cap broken, stamped to identify the corner as shown below. We reset the corner using Ripco's map and distances doubling it over using the Section Corner and the 1/16th corner. I found no evidence of old B.T.'s. I made four new ones and set a sign post 1 foot Northeast.

(c)(d)(e) Plan view of the corner with ties to at least 4 witness monuments. If in disagreement with previously established corner, show the distances between the two corners and also indicate the ties to the disputed.



(i) I, Michael E. Weber R.L.S. No. 2070
 hereby certify that the corner location on this record was determined by me or under my direction and control and that this U.S. Public Land Survey Monument Record is correct and complete to the best of my knowledge and belief.

Signature Michael E. Weber Date August, 15 2007



Index No. R-15

3910220020