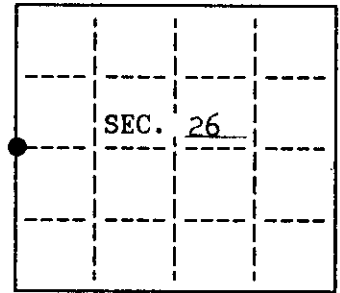


**U. S. PUBLIC LAND SURVEY MONUMENT RECORD**

Note: This form is intended and designed to fulfill all requirements of Wisconsin Administrative Code, Chapter A-8 7.08 U.S. Public Land Survey Monument Record (3)(a)(b)(c)(d)(e)(f)(g)(h)(i). An additional sheet may be added if necessary to conform with said requirements.

(a) CORNER LOCATION: State Plane Coordinates  
 West 1/4 corner of Sec. 26 X Not available  
 Township 39 North Y Not available  
 Range 10 East Datum Base \_\_\_\_\_  
 Town/City Three Lakes County of Oneida



(b) HISTORY OF ORIGINAL CORNER ESTABLISHMENT  
 Original Surveyor: William E. Daugherty Original B.T.'S  
 Date of Survey: Commenced Sept. 30, 1863 6" Tamarack N 37° W 85 lks.  
 Completed Oct. 7, 1863 No other near.

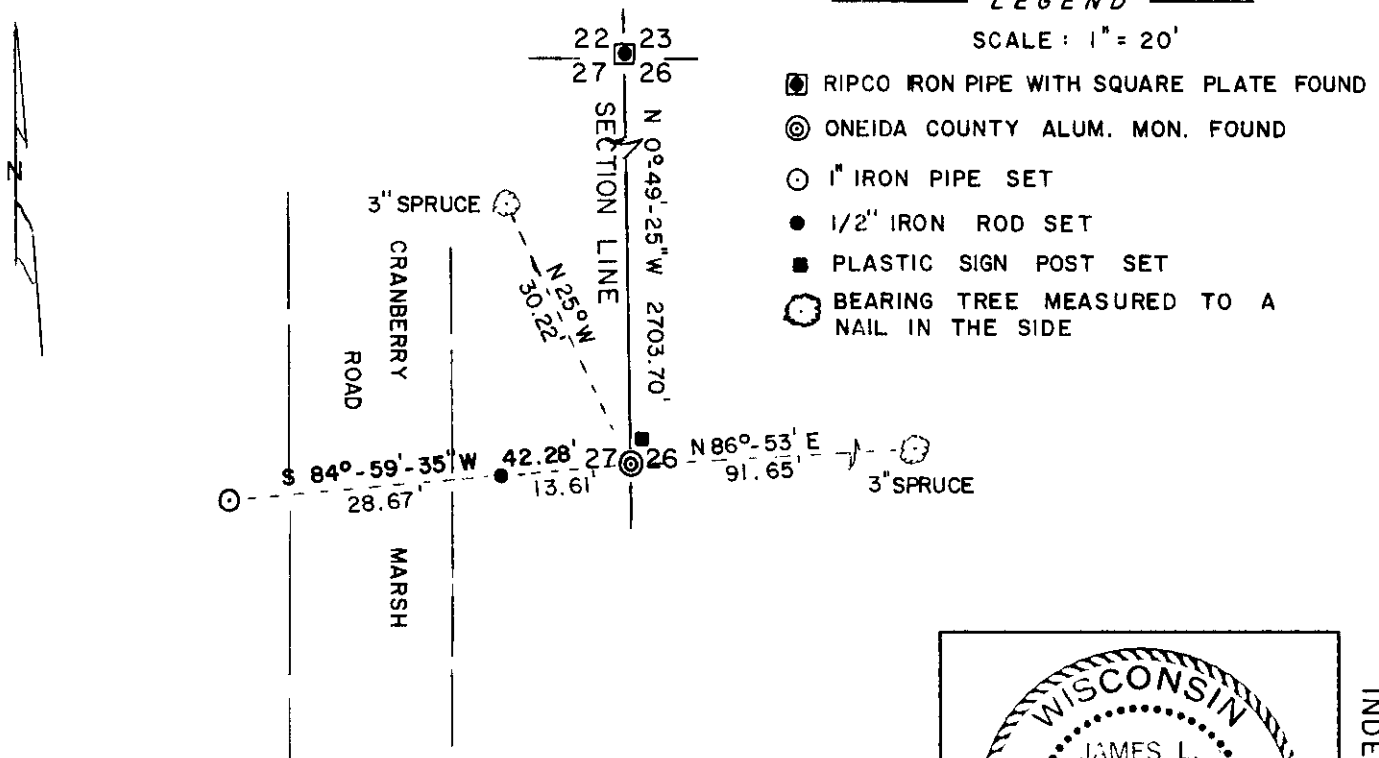
(b)(f)(g)(h) Description of monument found at this corner and if it was accepted, state all evidence (material, testimonial, occupational, plats, records, other monuments) used as a basis for accepting. If not accepted or if nothing was found, state evidence used as basis for establishing location. If reestablished through lost corner proportionate methods, indicate all monuments, distances and directions used to establish. Indicate type of monument and sign post found or set.

Dec. 20, 1989: Found an Oneida Co. Aluminum monument in swamp and 28' east of a dirt road to the cranberry marshes.  
 Set a plastic sign post 0.5' northeast of the corner.

Made the following references:  
 Set 1" iron pipe S 84°-59'-35" W 42.28'  
 Set 1/2" iron rod S 84°-59'-35" W 13.61'

Made the following bearing trees measured to a nail in the side:  
 3" Spruce N 25° W 30.22'  
 3" Spruce N 86°-53' E 91.65'

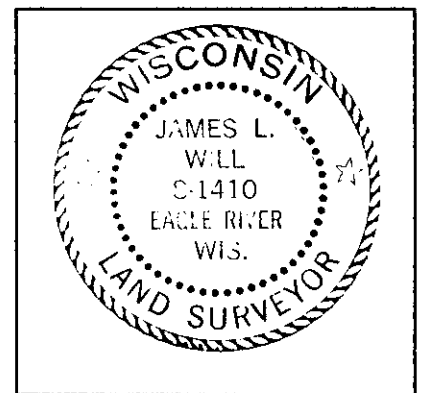
(c)(d)(e) Plan view of corner with ties to at least 4 witness monuments. If in disagreement with previously established corner, show the distances between the two corners and also indicate the ties to the disputed.



(i) I, James L. Will, R.L.S. #1410 hereby certify that the corner location on this record was determined by me or under my direction and control and that this U.S. Public Land Survey Monument Record is correct and complete to the best of my knowledge and belief.

Signature *James L. Will*

Date April 27, 1990



INDEX NO. T-17

3910272000