

REGISTER OF DEEDS OFFICE
ONEIDA COUNTY, WIS.

FILED
JAN 14 2008

At _____ O'Clock _____ M
THOMAS H. LEIGHTON
REGISTER OF DEEDS

U.S. PUBLIC LAND SURVEY MONUMENT RECORD

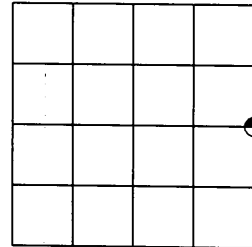
Note: This form is intended and designed to fulfill all requirements of the Wisconsin Administrative Code, Chapter A-E 7.08 U.S. Public Land Monument Record (3)(a)(b)(c)(d)(e)(f)(g)(h)(i). An additional sheet may be added if necessary to conform with said requirements.

(a) CORNER LOCATION:

E 1/4 corner of Sec. 33
Township 39 North
Range 10 East
Town of Sugar Camp
County of Oneida

COORDINATES - Oneida Co. Grid

Corner = North: 232679.93615
East: 308265.20085
Control Station: 244
Control Station = Latitude: 45°49'1.44434
Longitude: 89°13'35.28825"
Datum: NAD 83-91 Method: RTK Direct



(b) HISTORY OF ORIGINAL CORNER ESTABLISHMENT

Original Surveyor: William E. Daugherty
Date of Survey: Commenced September 30, 1863
Completed October 7, 1863

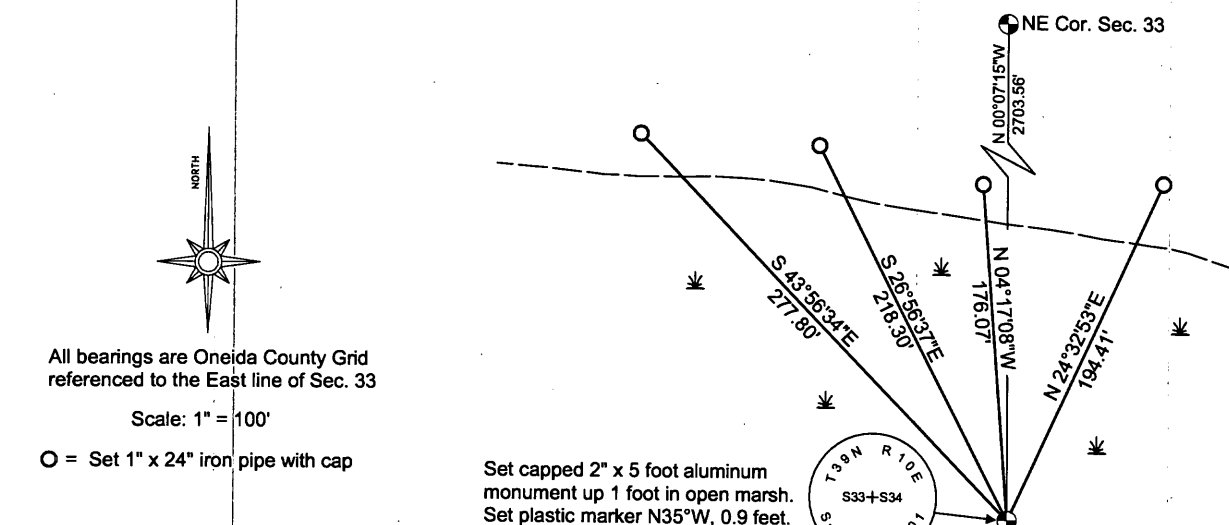
Original B.T.'S
5" Tamarack; N40°E, 10 links
6" Tamarack; S67°W, 139 links

SECTION 33

(f)(g)(h) DESCRIPTION OF MONUMENT FOUND AT THIS CORNER AND IF IT WAS ACCEPTED, STATE ALL EVIDENCE (MATERIAL, TESTIMONIAL, OCCUPATIONS, PLATS, RECORDS, OTHER MONUMENTS) USED AS A BASIS FOR ESTABLISHING LOCATION. IF NOT ACCEPTED OF IF NOTHING WAS FOUND, STATE EVIDENCE USED AS BASIS FOR ESTABLISHING LOCATION. IF REESTABLISHED THROUGH LOST CORNER PROPORTIONATE METHODS, INDICATE ALL MONUMENTS, DISTANCES AND DIRECTIONS USED TO ESTABLISH. INDICATE TYPE OF MONUMENT AND SIGN POST FOUND OR SET.

December 19, 2001: I, James D. Rein, Registered Land Surveyor No. S-1234, found no evidence of original corner or bearing trees. I set a capped 2" dia. x 5 feet long aluminum monument, up 1 foot in open marsh, at single proportion measurement between the section corners. I set reference monuments in an old road bed for ties, as shown in diagram.

(c)(d)(e) PLAN VIEW OF CORNER WITH TIES TO AT LEAST 4 WITNESS MONUMENTS. IF IN DISAGREEMENT WITH PREVIOUSLY ESTABLISHED CORNER, SHOW THE DISTANCE BETWEEN THE TWO CORNERS AND ALSO INDICATE THE TIES TO THE DISPUTED CORNER.

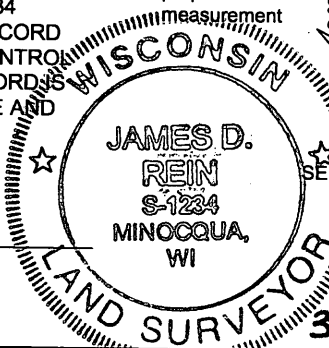


All bearings are Oneida County Grid
referenced to the East line of Sec. 33
Scale: 1" = 100'
O = Set 1" x 24" iron pipe with cap

(i) I, JAMES D. REIN, REGISTERED LAND SURVEYOR NO. S-1234
HEREBY CERTIFY THAT THE CORNER LOCATION ON THIS RECORD
WAS DETERMINED BY ME OR UNDER MY DIRECTION AND CONTROL
AND THAT THIS U.S. PUBLIC LAND SURVEY MONUMENT RECORD IS
CORRECT AND COMPLETE TO THE BEST OF MY KNOWLEDGE AND
BELIEF.

[Signature]
SIGNATURE

4/22/02
DATE



INDEX NO. X-13

3910 33 20 00