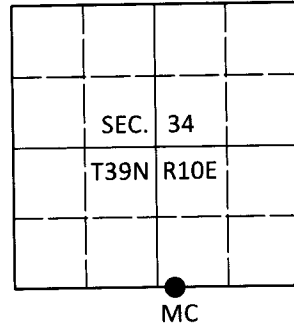


# U.S. PUBLIC LAND SURVEY MONUMENT RECORD

Note: This form is intended and designed to fulfill all requirements of Wisconsin Administrative Code, Chapter A-E 7.08 U.S. Public Land Survey Monument Record (3)(a-i).

(a) CORNER LOCATION  
 Meander Cor. of Secs. 3 & 34  
 Township 38 & 39 North  
 Range 10 East of the 4th P.M.  
 Town of Three Lakes  
 County of Oneida

WISCRS - Oneida County  
 N: 229,895.48 USft  
 E: 311,328.02 USft  
 Datum: NAD83(2011)  
 GNSS Method: RTN - Direct  
 GNSS Control: WISCORS VRS



(b) HISTORY OF ORIGINAL CORNER ESTABLISHMENT

Original Surveyor: Hiram Fellows

Original Accessories:

Date of Survey      Commenced: July, 1859  
 Completed: July, 1859

tamarack 8" N82.5°E, 404 lks.  
 no other tree near

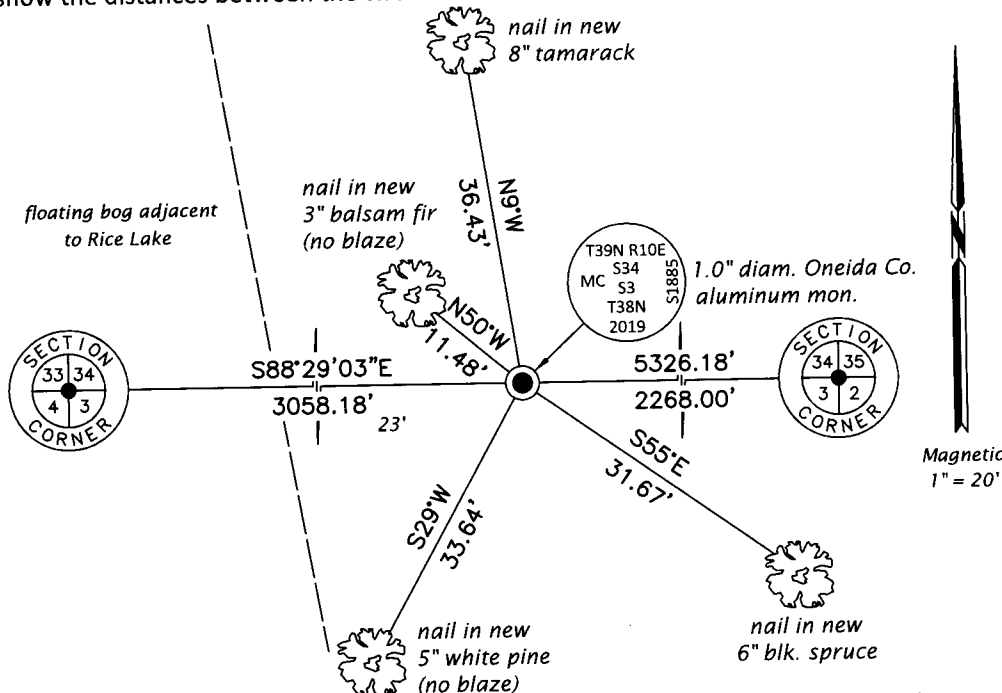
(b)(f)(g)(h) Description of monument found at this corner and if it was accepted, state all evidence (material, testimonial, occupational, plats, records, other monuments) used as a basis for accepting. If not accepted or if nothing was found, state evidence used as basis for establishing location. If re-established through lost corner proportionate methods, indicate all monuments, distances and directions used to establish. Indicate type of monument and sign post found or set.

1959: On page 116 of RIPCO Book 2, Rhinelander Paper Co. identifies corner as "set MC" 34.365 chs. West of 3910340000 with the following bearing tree: SB 6" N44°W, 30 lks.

July 3, 2019: I found no evidence of a monument at the corner point. I established the corner record distance from 3910340000 on the section line previously measured with GPS. At the corner point, I set a 1.0" diam., 33" long aluminum pipe with a 2.5" diam. Oneida Co. aluminum cap flush with the ground surface. A rotted, unmarked spruce stump exists at RIPCO's record measurement. I established accessories as shown below. I set a white vinyl sign post bearing Northeast, 0.6 ft.

The coordinate value shown has been verified by at least one of the following methods: 1) comparison to a previously GPS determined published value; 2) the value is the average of two or more GPS observations at a markedly different time; 3) one or more distances were measured back to the GPS observed corner from temporary GPS observed offset locations.

(c)(d)(e) Plan view of corner with ties to at least 4 witness monuments. If in disagreement with previously established corner, show the distances between the two corners and also indicate the ties to the disputed.

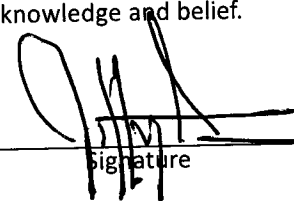


REGISTER OF DEEDS OFFICE  
 ONEIDA COUNTY  
 FILED

AUG 28 2019

KYLE J. FRANSON  
 REGISTER OF DEEDS

(i) I, Jeffrey W. Austin, Professional Land Surveyor No. S-1885, hereby certify that the corner location on this record was determined by me or under my direction and control and that this U.S. Public Land Survey Monument Record is correct and complete to the best of my knowledge and belief.

      JUL 29, 2019  
 signature      Date