

Stock No. 26273

U.S. PUBLIC LAND SURVEY MONUMENT RECORD

Index No. E 6-7

State of Wisconsin

County of Oneida } ss.

History of original corner establishment: The original Government Survey was performed by William E. Daugherty in 1859. Wood post set:

White Pine 16" N10°E 20 lks.
White Pine 20" S63°E 18 lks.

I, John H. Fisher, do hereby certify that on the 7th day of June, 1985, I found evidence of the meander corner of Sections 5 & 8 Township 39 North, Range 11 E, Fourth Principal Meridian, as described hereon; and that from this evidence I established a new monument and accessories as described hereon to perpetuate the original location of this corner.

Resident witnesses:

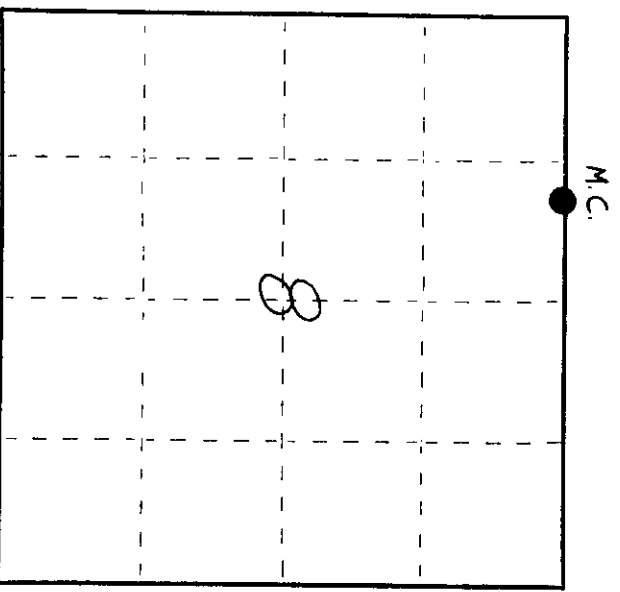
None

Description of corner evidence found: Oneida County brass tablet on 2" iron pipe stamped to identify corner and the following bearing trees.

Red Pine 18" N17°E 23.25 feet
Red Pine 16" S 2°W 12.20 feet

Description of monument and accessories I established to perpetuate the original location of this corner. Set nails in the following new bearing trees

Red Pine 12" N76°E 22.90 feet
White Pine 9" S54°E 54.40 feet



O = Corner monument restored.

Dated at Minocqua, Wis., this 27th day of June, 1985.

Signature John H. Fisher Title Registered Land Surveyor Registration No. S-8336 (County Surveyor, Registered Land Surveyor, or other duly authorized official)

Office of Register of Deeds, County of Oneida, I hereby certify that the within instrument was filed in this office for record on the 27th day of June, 1985 at 10:00 o'clock A.M.

(Register of Deeds)

By Deputy

3911050024

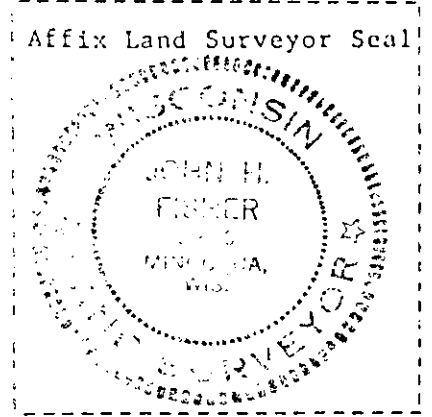
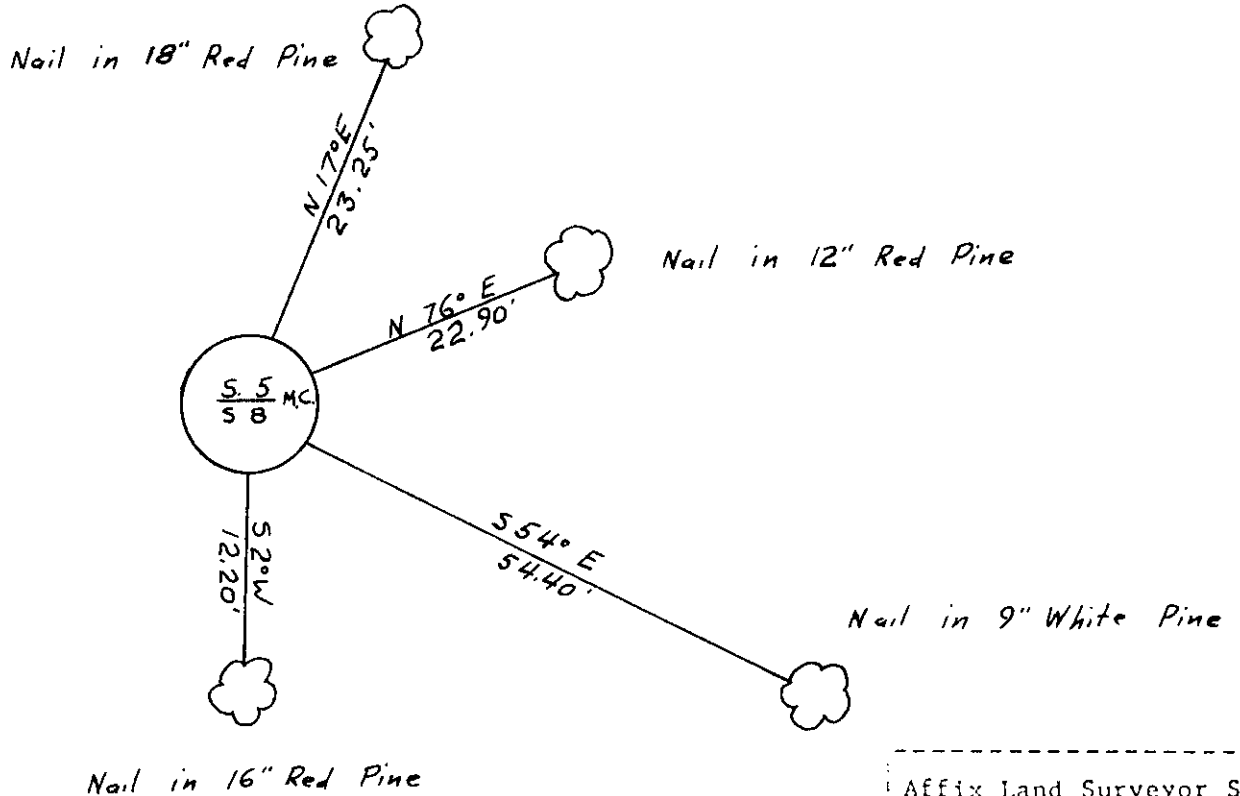
(e) Describe any material discrepancy between the location of the corner as restored or reestablished and the location of that corner as previously restored or reestablished by distance and direction. Show the discrepancy on the plan view drawing under (d), above. Show the distances between the corner as previously restored or reestablished and (1) the corner as restored or reestablished, and (2) to at least 2 of the witness monuments shown on the drawing in (d), above.

See drawing below

(f) Was the corner restored through acceptance of (1) an obliterated evidence location, or, (2) a found perpetuated location?

Found perpetuated location

(g&h) Was the corner reestablished through lost corner proportionate methods? If so, show the method, including the directions and distances to other public land survey corners used as evidence or used for proportioning in determining the corner location?



(1) John H. Fisher
 (type or print name) certify that the corner location shown on this record was determined by me or under my direction and control and that this U.S. Public Land Survey Monument Record is correct and complete to the best of my knowledge and belief

John H. Fisher Signature 6/27/85 Date

REGISTER OF DEEDS OFFICE
 ONEIDA COUNTY, WIS.
 FILED
 JUL 11 1985
 At 5:00 O'Clock A M
 DORIS VERAGE KUEHN
 REGISTER OF DEEDS