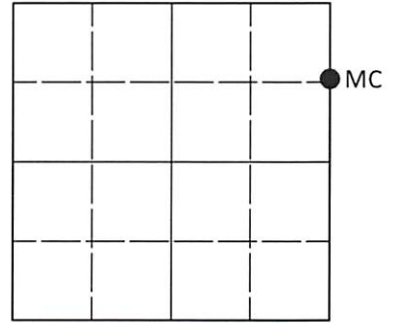


U.S. PUBLIC LAND SURVEY MONUMENT RECORD

Note: This form is intended and designed to fulfill all requirements of Wisconsin Administrative Code, Chapter A-E 7.08 U.S. Public Land Survey Monument Record (3)(a-i).

(a) CORNER LOCATION
 Meander Cor. of Secs. 14 & 15
 Township 39 North
 Range 11 East of the 4th P.M.
 Town of Three Lakes
 County of Oneida

WISCRS - Oneida County
 N: 247,638.38 USft
 E: 345,900.95 USft
 Datum: NAD 83(2011) ep. 2010.00
 GNSS Method: RTN - Direct
 GNSS Control: WISCORS VRS



Sec. 15, T. 39 N., R. 11 E.

(b)(f)(g)(h) Description of monument found at this corner and if it was accepted, state all evidence (material, testimonial, occupational, plats, records, other monuments) used as a basis for accepting. If not accepted or if nothing was found, state evidence used as basis for establishing location. If re-established through lost corner proportionate methods, indicate all monuments, distances and directions used to establish. Indicate type of monument and sign post found or set.

Sep., 1859: GLO survey by William E. Daugherty, U.S. Deputy Surveyor. North between Secs. 14 and 15, at 75.01 chs. set a wood post witnessed by: birch 10 N11°E, 12 lks.; aspen 10 S63°W, 14 lks.

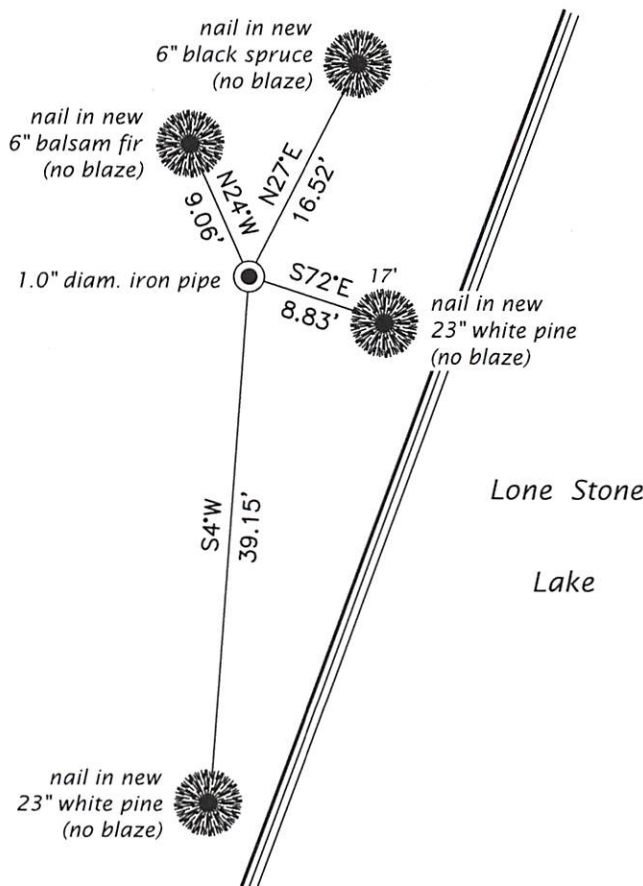
Jun. 2 - Oct. 18, 1941: In Dependent Resurvey of T. 39 N., R. 11 E., Hugh B. Crawford identifies corner as 2" iron post with brass cap witnessed by: white pine 15" N0°30'W, 121 lks.; white pine 9" N58-3/4°W, 30-1/2 lks.

Nov. 17, 2004: On OCS Map No. B-7284, Michael E. Weber identifies corner as 1" iron pipe set.

Feb. 24, 2021: I found and accepted the record monument, a 1.0" diam. iron pipe flush with the ground surface. I was unable to locate the monument or accessories established in the GLO resurvey. I established accessories as shown below. I was unable to set a sign post due to frost.

The coordinate value shown has been verified by at least one of the following methods: 1) comparison to a previously GNSS determined published value; 2) the value is the average of two or more GNSS observations at a markedly different time; 3) one or more distances were measured back to the GNSS observed corner from temporary GNSS observed offset locations.

(c)(d)(e) Plan view of corner with ties to at least 4 witness monuments. If in disagreement with previously established corner, show the distances between the two corners and also indicate the ties to the disputed.




REGISTER OF DEEDS OFFICE
 ONEIDA COUNTY
 FILED

JUN 23 2021

KYLE J. FRANSON
 REGISTER OF DEEDS

(i) I, Jeffrey W. Austin, Professional Land Surveyor No. S-1885, hereby certify that the corner location on this record was determined by me or under my direction and control and that this U.S. Public Land Survey Monument Record is correct and complete to the best of my knowledge and belief.


 Signature

MAY 20, 2021
 Date