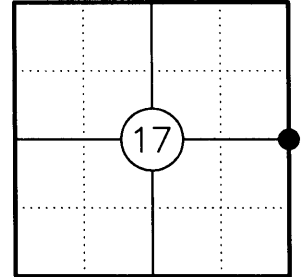


U.S. PUBLIC LAND SURVEY MONUMENT RECORD

NOTE: THIS FORM IS INTENDED AND DESIGNED TO FULFILL ALL REQUIREMENTS OF WISCONSIN ADMINISTRATIVE CODE CHAPTER A-E 7.08 U.S. PUBLIC LAND SURVEY MONUMENT RECORD (3) (a)(b)(c)(d)(e)(f)(g)(h)(i). AN ADDITIONAL SHEET MAY BE ADDED IF NECESSARY TO CONFIRM WITH SAID REQUIREMENTS.

(a) CORNER LOCATION:

EAST 1/4 CORNER OF SECTION 17
 TOWNSHIP 39 NORTH
 RANGE 11 EAST
 TOWN OF THREE LAKES
 ONEIDA COUNTY



(b) HISTORY OF ORIGINAL CORNER:

ORIGINAL SURVEYOR: WILLIAM E. DAUGHERTY
 DATE OF SURVEY: SEPTEMBER, 1859

ORIGINAL BEARING TREES: 8" SPRUCE - S82°E, 6 LKS.
 10" W. PINE - S83°W, 4 LKS.

(f)(g)(h) DESCRIPTION OF MONUMENT FOUND AT THIS CORNER AND IF IT WAS ACCEPTED STATE ALL EVIDENCE (MATERIAL, TESTIMONIAL, OCCUPATIONAL, PLATS, RECORDS, OTHER MONUMENTS) USED AS A BASIS FOR ESTABLISHING LOCATION. IF RE-ESTABLISHING THROUGH LOST CORNER PROPORTIONATE METHODS, INDICATE ALL MONUMENTS, DISTANCES, AND DIRECTIONS USED TO ESTABLISH. INDICATE TYPE OF MONUMENT AND SIGN POST FOUND OR SET.

1932: H.C. HALL SET A WELL POINT AT RECORD DISTANCE FROM BOTH ORIGINAL BEARING TREES AND MADE 3 NEW BEARING TREES.

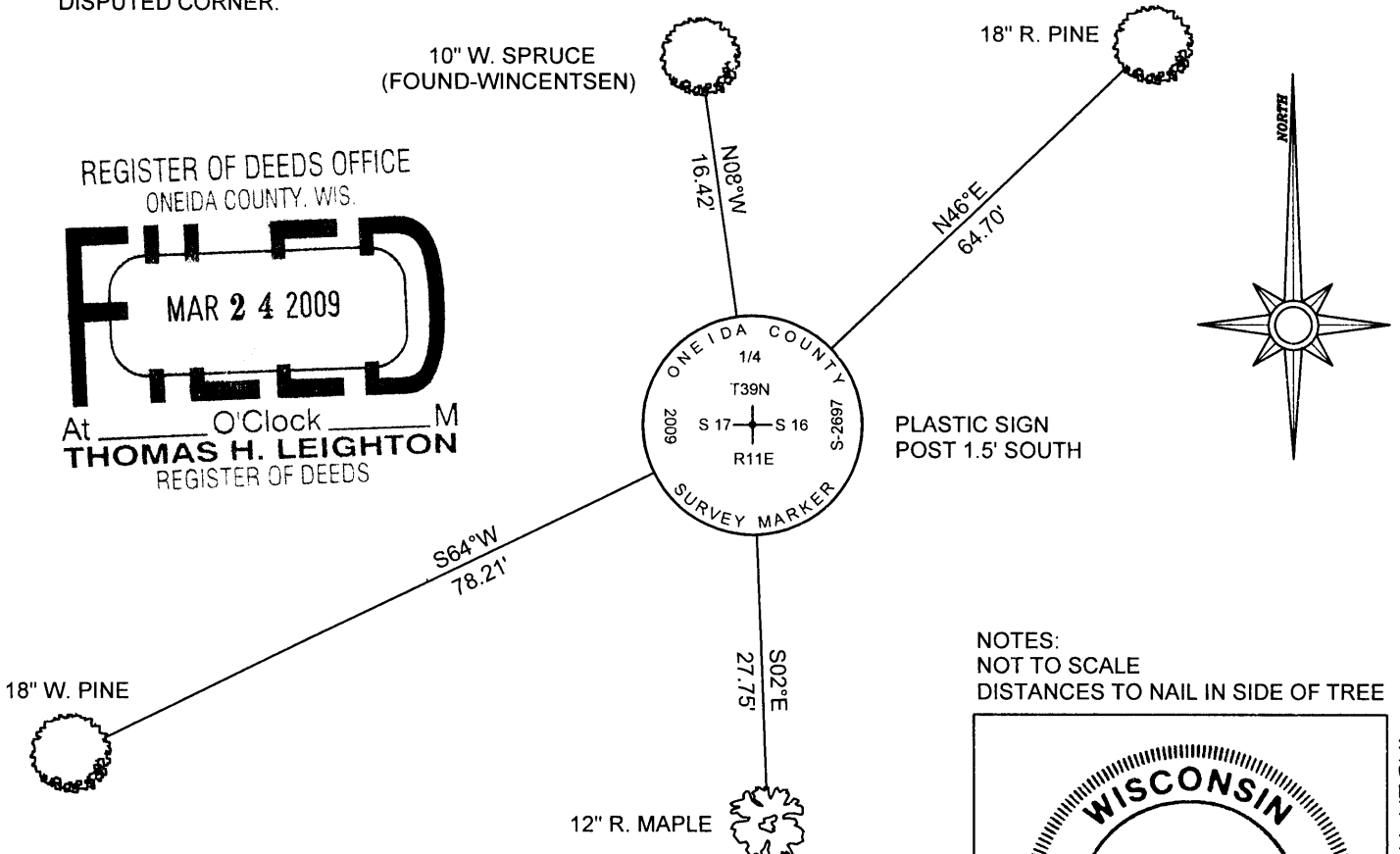
1962: F.R. WINCENTSEN SHOWS A WELL POINT AT THE EAST 1/4 CORNER POSITION AND 2 BEARING TREES.

1982: JAMES WILL, RLS, SHOWS A WELL POINT AT THE EAST 1/4 CORNER POSITION ON HIS SURVEY IN GOV'T LOT 3.

1990 & 1998: KIP SODER, RLS, SHOWS A 1-1/4" DIA. WELL POINT AT THE EAST 1/4 CORNER POSITION ON HIS SURVEYS IN GOV'T LOTS 3 & 5.

03/05/09: I FOUND THE 1-1/4" DIA. WELL POINT AND 1 EXISTING BEARING TREE. I REPLACED THE WELL POINT WITH AN ONEIDA COUNTY ALUMINUM MONUMENT AND MADE ACCESSORIES AS SHOWN BELOW.

(c)(d)(e) PLAN VIEW OF CORNER WITH TIES TO AT LEAST FOUR WITNESSES. IF IN DISAGREEMENT WITH PREVIOUSLY ESTABLISHED CORNER, SHOW THE DISTANCES BETWEEN THE TWO CORNERS AND ALSO INDICATE THE TIE TO THE DISPUTED CORNER.



REGISTER OF DEEDS OFFICE
 ONEIDA COUNTY, WIS.
FILED
 MAR 24 2009
 At _____ O'Clock _____ M
THOMAS H. LEIGHTON
 REGISTER OF DEEDS

NOTES:
 NOT TO SCALE
 DISTANCES TO NAIL IN SIDE OF TREE



I, JEFFREY D. ANDERSON, REGISTERED LAND SURVEYOR NO. 2697, HEREBY CERTIFY THAT THE CORNER LOCATION ON THIS RECORD WAS REFERENCED BY ME OR UNDER MY DIRECTION AND CONTROL AND THAT THIS U.S. PUBLIC LAND SURVEY MONUMENT RECORD IS COMPLETE TO THE BEST OF MY KNOWLEDGE AND BELIEF.

Jeffrey D. Anderson
 SIGNATURE 3911172000 3/11/09
 DATE