

U.S. PUBLIC LAND SURVEY MONUMENT RECORD

Index No. V-23

State of Wisconsin }  
County of Oneida } ss.

I, Milo E. Stefan, do hereby certify that on the 3rd day of October, 1988, I found evidence of the quarter corner of sections 25 and 36 Township 39 North, Range 11 East, Fourth Principal Meridian, as described hereon; and that from this evidence I established a new monument and accessories as described hereon to perpetuate the original location of this corner.

Resident witnesses:

Jeanne M. Stefan

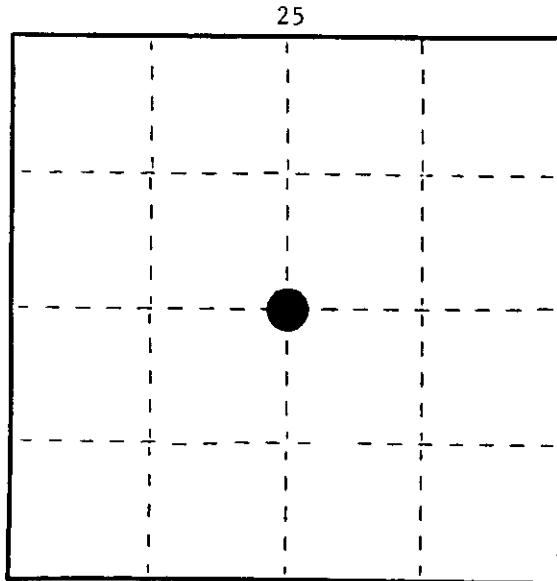
Myron L. Smith

Jeffrey L. Kennedy

History of original corner establishment: In 1859 by Wm. Daugherty. Declared lost by Hugh Crawford in 1941 and restored by lost methods. He set a 6" x 24" concrete monument and two BTs:  
10" Birch, N61°W, 26 1/2 links (17.49')  
10" Yellow Birch, S34 3/4°W, 42 1/2 links (28.05')

Description of corner evidence found:  
Crawford's monument in good condition,  
18" Yellow Birch, S36°W, 28.00'  
Steel Sign Post, South, 1.0'  
14" Yellow Birch, N62°W, 17.33'

Description of monument and accessories I established to perpetuate the original location of this corner.  
12" Hemlock, S56°E, 43.79'  
4" Red Maple, N41°E, 2.64'



○ = Corner monument restored.

Dated at Rhinelander, Wis., this 15th day of November, 1988

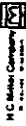
Signature *Milo E. Stefan* Title Land Surveyor Registration No. S-1558  
(County Surveyor, Registered Land Surveyor, or other duly authorized official)

Office of Register of Deeds, County of \_\_\_\_\_, I hereby certify that the within instrument was filed in this office for record on the \_\_\_\_\_ day of \_\_\_\_\_, 19\_\_\_\_ at \_\_\_\_\_ o'clock \_\_\_\_\_ M.

(Register of Deeds)

By \_\_\_\_\_ Deputy

FORM NO. 985-A



Stock No. 26273

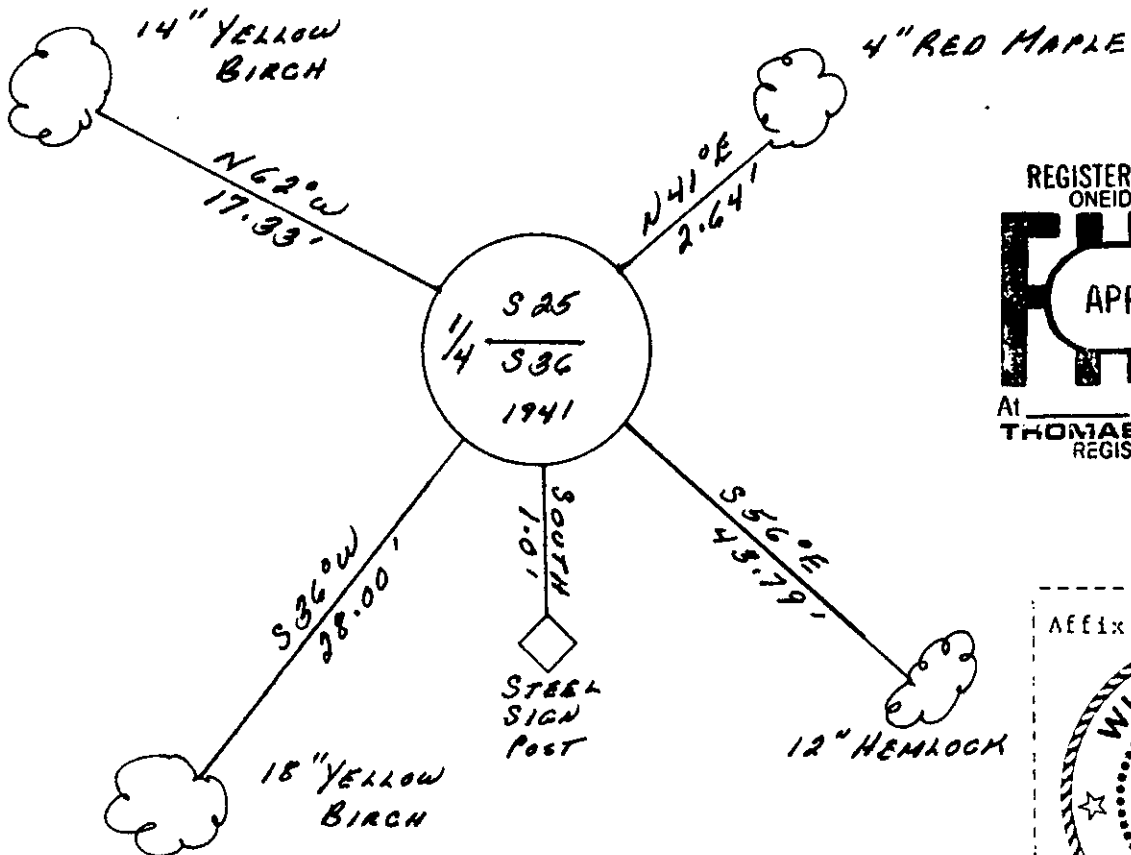
3911250020

(e) Describe any material discrepancy between the location of the corner as restored or reestablished and the location of that corner as previously restored or reestablished by distance and direction. Show the discrepancy on the plan view drawing under (d), above. Show the distances between the corner as previously restored or reestablished and (1) the corner as restored or reestablished, and (2) to at least 2 of the witness monuments shown on the drawing in (d), above.

(f) Was the corner restored through acceptance of (1) an obliterated evidence location, or, (2) a found perpetuated location?

2) A found restored position

(g) Was the corner reestablished through lost corner proportionate methods? If so, show the method, including the directions and distances to other public land survey corners used as evidence or used for proportioning in determining the corner location?



REGISTER OF DEEDS OFFICE  
ONEIDA COUNTY, WIS.  
**FILED**  
APR 8 1991  
At \_\_\_\_\_ O'Clock \_\_\_\_\_ M  
THOMAS H. LEIGHTON  
REGISTER OF DEEDS

Affix Land Surveyor Seal  

 WISCONSIN  
 MILO E. STEFAN  
 S-1558  
 RHINELANDER, WIS.  
 LAND SURVEYOR

(i) I, Milo E. Stefan  
 (type or print name) certify that the corner location shown on this record was determined by me or under my direction and control and that this U.S. Public Land Survey Monument Record is correct and complete to the best of my knowledge and belief.

Milo E. Stefan Signature      10/31/88 Date

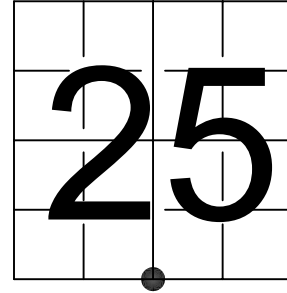
Certificate ready for filing: Amela York District Ranger

# U. S. PUBLIC LAND SURVEY MONUMENT RECORD

NOTE: This form is intended and designed to fulfill all requirements of Wisconsin Administrative Code, Chapter A-E 7.08 U.S. Public Land Survey Monument Record (3) (a-i)

A-E 7.08(3)(a) Identity of corner:  
SOUTH 1/4 CORNER SECTION 25,  
TOWNSHIP 39 NORTH,  
RANGE 11 EAST OF THE 4TH PM,  
TOWN OF THREE LAKES,  
COUNTY OF ONEIDA

WISCRS - ONEIDA COUNTY  
N: 232,980.359 USft (XXX,XXX.XXX)  
E: 354,176.549 USft (XXX,XXX.XXX)  
Datum: NAD83 (2011)  
GNSS Method RTK  
GNSS Control WISCORS VRS



The coordinate value shown has been verified by the average of two or more GPS observations at a markedly different time. Coordinates shown in parenthesis are previously published values.

A-E 7.08(3)(b)

Original Surveyor: William E. Daugherty - September 6 - September 10 1859

Original Accessories:

Hemlock	15	N 45° E	10 Links
Birch	9	S 20° W	15 Links

See previous U.S. Public Land Survey Monument Record - V-23 - October 31, 1988 - Surveyor 1558 - Milo E. Stefan - THENCE:

November 7, 2023 - I found a 6" diameter concrete monument with a 2.5" diameter brass cap stamped to identify the corner location. The monument is flush with grade. I also found 4 of Stefan's bearing trees alive and in good condition, and his steel sign post. I established 2 new reference monuments as shown below.

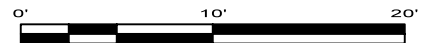
A-E 7.08(3)(c)(d) Plan view of corner with references to at least 4 witness monuments.

BEARINGS LISTED TO THE NEAREST SECOND ARE REFERENCED TO WISCONSIN COUNTY COORDINATE REFERENCE SYSTEM - ONEIDA COUNTY ZONE. ALL OTHER BEARINGS ARE MAGNETIC.

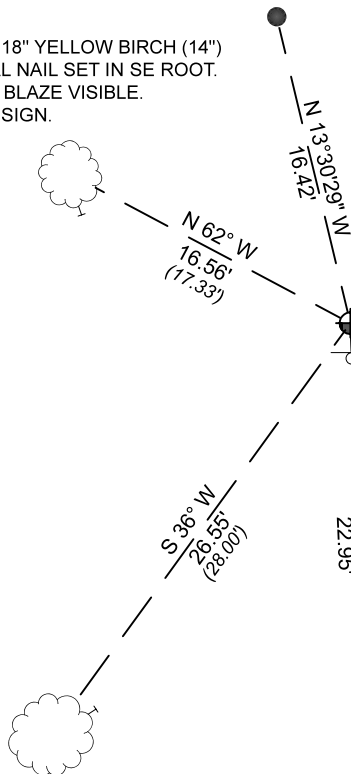


## LEGEND

- This Corner
- 0.75" diameter X 18" long iron rod, set
- Steel sign post and sign, found ±1 foot south of corner



OLD B.T. 18" YELLOW BIRCH (14")  
VERTICAL NAIL SET IN SE ROOT.  
BOTTOM BLAZE VISIBLE.  
OLD B.T. SIGN.



OLD B.T. 11" RED MAPLE (4")  
N 41° E, 1.89' (2.64')  
VERTICAL NAIL SET IN SW ROOT.  
OLD B.T. SIGN.

OLD B.T. 17" HEMLOCK (12")  
HORIZONTAL NAIL SET IN SW SIDE,  
±30" ABOVE GRADE.  
TOP & BOTTOM BLAZE VISIBLE.  
OLD B.T. SIGN.

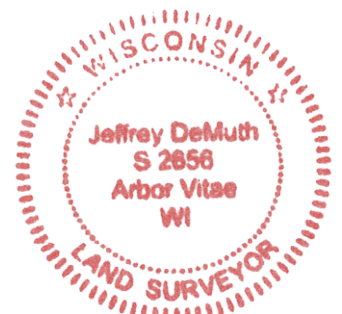
OLD B.T. 22" YELLOW BIRCH (18")  
VERTICAL NAIL SET IN NE ROOT.  
BOTTOM BLAZE VISIBLE.  
OLD B.T. SIGN.

A-E 7.08(3)(e) 1988 Surveyor found a G.L.O. monument as set by Crawford. I found a 6" diameter concrete monument with a 2.5" diameter brass cap in 2023.

A-E 7.08(3)(f) I accept this monument as a FOUND PERPETUATED LOCATION of the corner.

A-E 7.08(3)(g)(h) This corner was previously determined through lost-corner-proportionate methods.

A-E 7.08(3)(i) I, Jeffrey L. DeMuth, Professional Land Surveyor No. S-2656, hereby certify that the corner location on this record was determined by me or under my direction and control, and that this U.S. Public Land Survey Monument Record is correct and complete to the best of my knowledge, and belief.



SIGNATURE

November 8, 2023

DATE

43911250020