

This form is intended to fulfill the requirements of Chapter A-E7.08 (3)(a) thru (i) U.S. Public Land Survey Monument Location Record, Wisconsin Administrative Code. Use the reverse side of form for continuation.

U.S. PUBLIC LAND SURVEY MONUMENT LOCATION RECORD

USPLS CORNER: EAST WIT MC SECTION: 33 TOWNSHIP: 39 NORTH RANGE: 11 EAST
 NAME OF WATERWAY FOR M.C. CORNER: ISLAND LAKE SECTION LINE: NORTH
 (CITY)(VILLAGE)(TOWN) OF: THREE LAKES COUNTY OF: ONEIDA

Description of monument found or placed and all other evidence used as the basis for monument location; including monuments and measurements required if the corner location was reestablished by lost corner proportionate methods. Also indicate name of the original surveyor, original survey date and the corner monument, bearing trees, witness or other reference monuments established, including measured bearing and distance ties, from available survey records.

Found an old rusted/white painted 1" dia. iron pipe with uncapped top 8" up and loose amidst rocks at grade; I replumbed iron pipe to 6" up and drove a standard 2" dia. by 30" long aluminum pipe monument over it with stamped Oneida County cap 6" up and replaced rocks as a cairn at grade. Corner is at the NW corner of improved lake lot at Fire No. 7563 County Highway 'X' and falls 4.5'+/- East of existing rocky riprapped lake shoreline bearing N35°E.

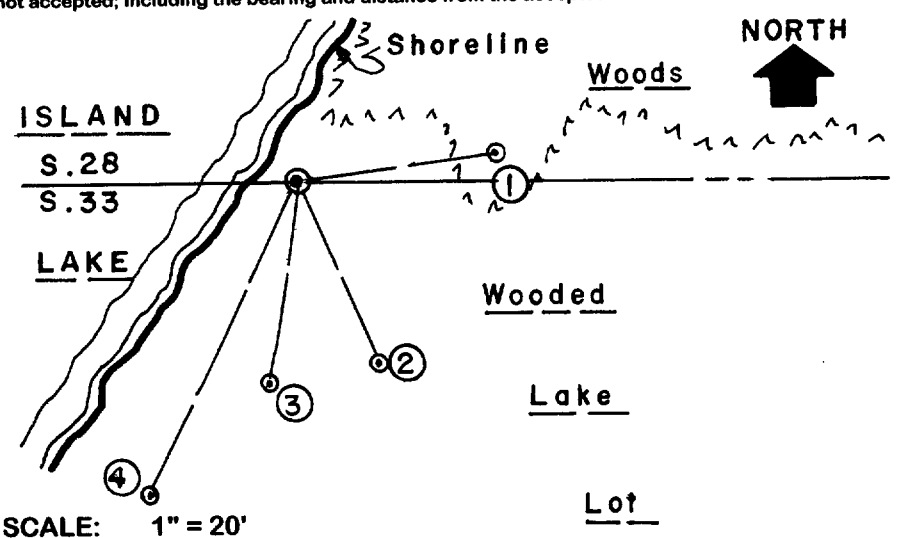
In September 1859, William E. Daugherty/GLO set a wood post as original MC and noted OBTs: a 12" Pw North 24 links and an 8" Py S87°E 11 links; all now undoubtedly obliterated in impounded lake bed due to dam on the Eagle River in Section 5.

In November 1907, B.F. Dorr found both GLO OBTs down and set a wood post, now gone, as a new Wit MC 1 rod East on the section line, also being at the NW corner of Lot 1 of his Minola Beach Plat filed in Cabinet 1 Sheet 182 in Oneida County records, and noted new BTs: a 13" Pr N33°E 33 and 2/3 links (22.2'), now a 16" dia. by 16" high dead stump with part of lower face blaze plain at N35°E 22.4', and a 7" Aspen S18.5°E 47.75 links, now gone. I painted old stump blaze F. orange.

In February 1949, F.R. Wincentsen/RLS 155 notes an iron pipe at this Wit MC per Page 293 of Book 1 of his field notes and also on a Plat of Survey dated September 1952 filed as B-506 in Oneida County survey records.

This recovery completed August 18, 2003 and directly witnessed by adjacent owner Bernard Kuhl SE of Wit MC.

Plan view map of monument location with bearing and distance ties to a minimum of four(4) described witness or reference monuments of concrete, natural stone, iron, live bearing trees or equivalent material. If applicable, also show a minimum of two(2) bearing and distance ties to any other monument found and not accepted; including the bearing and distance from the accepted monument.



- WITNESS MONUMENT TIES:**
- ① New 15" Pr BT N82°E 20.52'.
 - ② New 8" Pr BT S23°E 20.67'.
 - ③ New 7" Pr BT S08°W 21.05'.
 - ④ New 13" Pr BT S25°W 36.79' to PK/W in left face.
- No standard white poly'T' marker post set in lawn area at corner per request of owner.

SCALE: 1" = 20'

Unless otherwise indicated, all bearing tree ties are to a .25" dia. by 2.5" long PK nail with a 1.25" dia. steel washer driven into unblazed right face and a .25" dia. by 2.5" long PK nail with a 2" dia. steel washer stamped BT is also driven into unblazed face of bearing tree at DBH; the basis for measured bearings is by compass to nearest degree and all tie distances are measured horizontal by steel tape corrected to nearest 1/100th feet at standard temperature of 68° F.

RLS SEAL:



LAND SURVEYOR CERTIFICATE:

I, William C. Rohde, hereby certify that I am duly licensed as a Professional Land Surveyor in the State of Wisconsin; that this USPLS monument location was determined by me and/or under my direct supervision and control; and that this U.S. Public Land Survey Monument Location Record is true and correct to the best of my knowledge and belief.

Signed: *William C. Rohde*
 William C. Rohde RLS 841

		T 39 N	
		33	
		R 11 E	

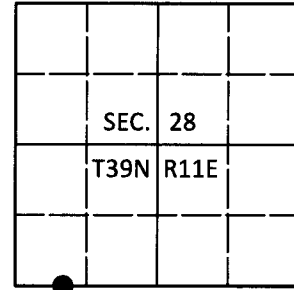
SECTION LOCATION MAP
 INDEX NO. V 9-10

U.S. PUBLIC LAND SURVEY MONUMENT RECORD

Note: This form is intended and designed to fulfill all requirements of Wisconsin Administrative Code, Chapter A-E 7.08 U.S. Public Land Survey Monument Record (3)(a-i).

(a) CORNER LOCATION
 Wit. Meander Cor. of Secs. 28 & 33
 Township 39 North
 Range 11 East of the 4th P.M.
 Town of Three Lakes
 County of Oneida

WISCORS - Oneida County
 N: 233,737.97 USft
 E: 336,588.69 USft
 Datum: NAD 83(2011)
 GNSS Method: RTN - Direct
 GNSS Control: WISCORS VRS



WCMC

(b) HISTORY OF ORIGINAL CORNER ESTABLISHMENT

Original Surveyor: Original Accessories:
 Date of Survey Commenced: See previous USPLS Monument Record
 Completed:

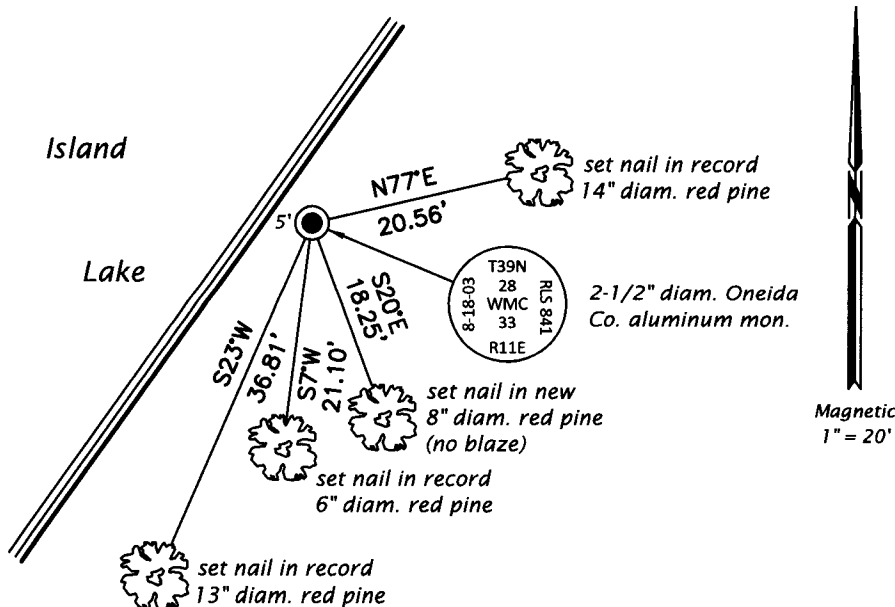
(b)(f)(g)(h) Description of monument found at this corner and if it was accepted, state all evidence (material, testimonial, occupational, plats, records, other monuments) used as a basis for accepting. If not accepted or if nothing was found, state evidence used as basis for establishing location. If re-established through lost corner proportionate methods, indicate all monuments, distances and directions used to establish. Indicate type of monument and sign post found or set.

This is a perpetuation of a previous USPLS Monument Record by William C. Rohde, RLS dated December 1, 2003 and filed in the office of the Oneida County Register of Deeds. A complete history of the corner can be found on the previous monument record. I accept the previous location as a true and faithful perpetuation or reestablishment of the original corner location and further perpetuate it as follows.

March 16, 2018: I found and accepted the record monument, a 2-1/2" diam. aluminum pipe with a 3-1/4" diam. Oneida Co. aluminum cap projecting 12" above the ground surface. Record bearing tree #2 is now standing dead. I found or established accessories as shown below. I did not set a sign post due to frost.

The coordinate value shown has been verified by at least one of the following methods: 1) comparison to a previously GPS determined published value; 2) the value is the average of two or more GPS observations at a markedly different time; 3) one or more distances were measured back to the GPS observed corner from temporary GPS observed offset locations.

(c)(d)(e) Plan view of corner with ties to at least 4 witness monuments. If in disagreement with previously established corner, show the distances between the two corners and also indicate the ties to the disputed.



REGISTER OF DEEDS OFFICE
 ONEIDA COUNTY
 FILED

APR 12 2018

KYLE J. FRANSON
 REGISTER OF DEEDS

(i) I, Jeffrey W. Austin, Professional Land Surveyor No. S-1885, hereby certify that the corner location on this record was determined by me or under my direction and control and that this U.S. Public Land Survey Monument Record is correct and complete to the best of my knowledge and belief.

[Handwritten Signature]
 Signature

4 APR 2018
 Date