

This form is intended to fulfill the requirements of Chapter A-E7.08 (3)(a) thru (i) U.S. Public Land Survey Monument Location Record, Wisconsin Administrative Code. Use the reverse side of form for continuation.

U.S. PUBLIC LAND SURVEY MONUMENT LOCATION RECORD

USPLS CORNER: WEST WIT MC SECTION: 5 TOWNSHIP: 38 NORTH RANGE: 11 EAST
 NAME OF WATERWAY FOR M.C. CORNER: MEDICINE LAKE SECTION LINE: NORTH
 (CITY)(VILLAGE)(TOWN) OF: THREE LAKES COUNTY OF: ONEIDA

Description of monument found or placed and all other evidence used as the basis for monument location; including monuments and measurements required if the corner location was reestablished by lost corner proportionate methods. Also indicate name of the original surveyor, original survey date and the corner monument, bearing trees, witness or other reference monuments established, including measured bearing and distance ties, from available survey records.

Found an old yellow painted 1" dia. iron pipe with uncapped top 5" up and 16" South of an East/West wood rail fence and 8'+/- West of existing lake shoreline bearing N40°E and 18'+/- North of the centerline of East/West blacktop roadway to concrete planked boat ramp at the lakeshore. I left old iron pipe in place and drove a standard 2" dia. by 30" long aluminum pipe monument over it with stamped Oneida County cap 3" up.

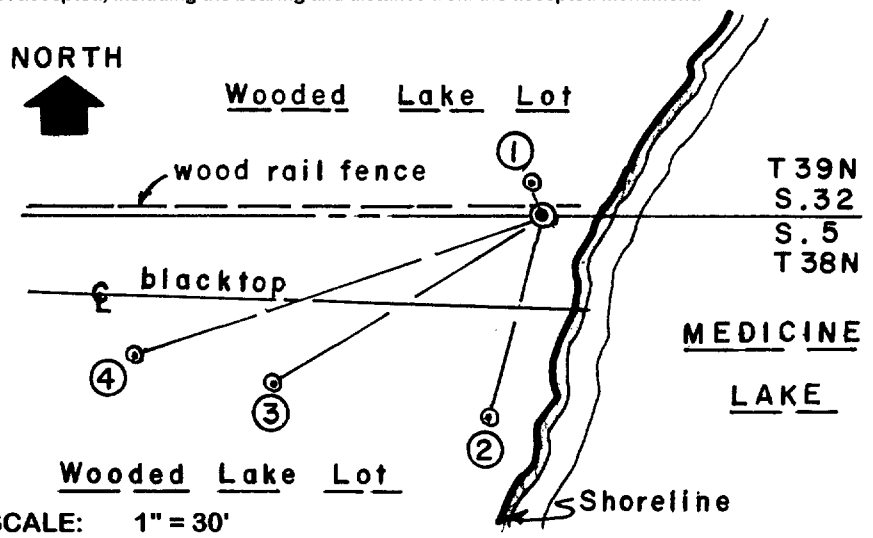
In July 1859, Hiram C. Fellows/GLO set a wood post as original MC and noted OBTs: an 8" Bw N25°W 11 links and a 10" Bw S85°W 22 links; all now undoubtedly obliterated in impounded lake bed due to dam on the Eagle River in Section 5.

In June 1954, F.R. Wincentsen/RLS 155 implies an iron pipe at this Wit MC and 33' South per Plat of Survey filed as B-2658 in Oneida County survey records. In September 1965, Robert E. Bandow/RLS 104 notes an iron pipe at this Wit MC per Plat of Survey filed as B-4615 in Oneida County survey records.

In May 1994, Kip W. Soder/RLS 1731 notes a 1.25" dia. iron pipe found in place at this Wit MC per Plat of Survey filed as B-2927 and in January 2002 he notes the same iron pipe per Plat of Survey filed as A-1103, in Oneida County survey records; however, in July 2002, he notes a 1" dia. iron pipe found at this Wit MC per Plat of Survey filed as A-1189 in Oneida County survey records.

This recovery completed August 19, 2003; there were no direct witnesses.

Plan view map of monument location with bearing and distance ties to a minimum of four(4) described witness or reference monuments of concrete, natural stone, iron, live bearing trees or equivalent material. If applicable, also show a minimum of two(2) bearing and distance ties to any other monument found and not accepted; including the bearing and distance from the accepted monument.



WITNESS MONUMENT TIES:

- ① New 5" Sb BT N20°W 5.48'.
- ② Old 1" dia. iron pipe found and replumbed flush S15°W 33.00'; I set a standard yellow poly RM cap in top.
- ③ New 10" Fir BT S58°W 49.63'.
- ④ New 10" Mr BT S69°W 66.90'.

Standard white poly 'T' marker post set 6" West of aluminum Wit MC monument; I flagged both with blaze orange tape. An old disturbed 3.5" sq. concrete post and a 1/2" dia. iron pipe with bushing top found near iron pipe Wit Mon at 2 above.

SCALE: 1" = 30'

Unless otherwise indicated, all bearing tree ties are to a .25" dia. by 2.5" long PK nail with a 1.25" dia. steel washer driven into unblazed right face and a .25" dia. by 2.5" long PK nail with a 2" dia. steel washer stamped BT is also driven into unblazed face of bearing tree at DBH; the basis for measured bearings is by compass to nearest degree and all tie distances are measured horizontal by steel tape corrected to nearest 1/100th feet at standard temperature of 68° F.

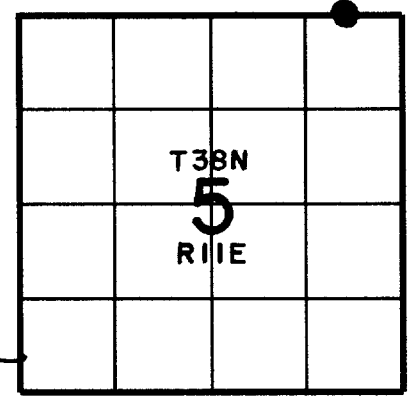
RLS SEAL:



LAND SURVEYOR CERTIFICATE:

I, William C. Rohde, hereby certify that I am duly licensed as a Professional Land Surveyor in the State of Wisconsin; that this USPLS monument location was determined by me and/or under my direct supervision and control; and that this U.S. Public Land Survey Monument Location Record is true and correct to the best of my knowledge and belief.

Signed: *William C. Rohde*
 William C. Rohde RLS 841



SECTION LOCATION MAP
 INDEX NO. 2819

Date Signed: December 1, 2003

3911320007