

This form is intended to fulfill the requirements of Chapter A-E7.08 (3)(a) thru (i) U.S. Public Land Survey Monument Location Record, Wisconsin Administrative Code. Use the reverse side of form for continuation.

U.S. PUBLIC LAND SURVEY MONUMENT LOCATION RECORD

USPLS CORNER: NORTH WIT MC SECTION: 33 TOWNSHIP: 39 NORTH RANGE: 11 EAST
 NAME OF WATERWAY FOR M.C. CORNER: MEDICINE LAKE SECTION LINE: WEST
 (CITY)(VILLAGE)(TOWN) OF: THREE LAKES COUNTY OF: ONEIDA

Description of monument found or placed and all other evidence used as the basis for monument location; including monuments and measurements required if the corner location was reestablished by lost corner proportionate methods. Also indicate name of the original surveyor, original survey date and the corner monument, bearing trees, witness or other reference monuments established, including measured bearing and distance ties, from available survey records.

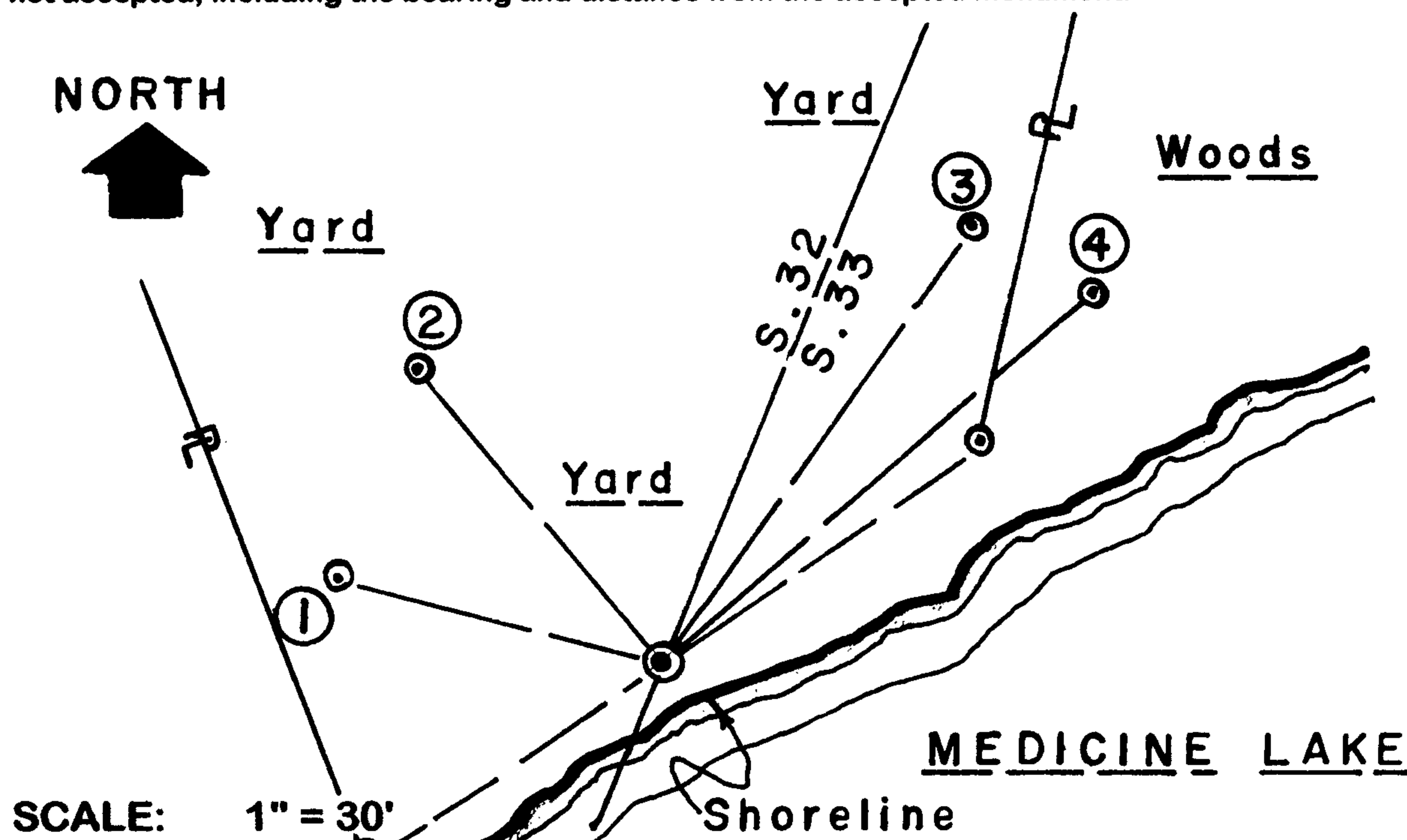
As the previous record iron pipe monument at this Wit MC location destroyed, I established a new Wit MC on section line by survey with a standard 2" dia. by 30" long aluminum pipe monument with stamped Oneida County cap flush with existing lawn area, per field data on reverse and with the approval of Oneida County Surveyor Romportl. New Wit MC falls 7'+/- N22°E of rocky riprapped lake shoreline bearing N65°E.

In September 1859, William E. Daugherty/GLO set a wood post as original MC and noted OBTs: an 8" Bw S62°W 11 links and an 8" Bw S75°E 6 links; all now undoubtedly obliterated in impounded lake bed due to dam on the Eagle River in Section 5.

In October 1963, F.R. Wincentsen/RLS 155 implies an iron pipe monument at this Wit MC location per map sketches on Pages 290 and 291 of his Book 1 of field notes filed in Oneida County survey records; iron pipenow gone. In February 1967, Robert E. Bandow/RLS 104 implies an iron pipe monument at this Wit MC location per Plat of Survey filed as B-4613 in Oneida County survey records; now gone.

In March 1996, Kip W. Soder notes an iron pipe by others as Wit MC at this location per Plat of Survey filed as B-3451 in Oneida County survey records. In August 1997, James L. Will/RLS 1410 notes that record Wit MC now in lake, but set no new Wit MC on section line per Plat of Survey filed as B-3732 in Oneida County survey records. This recovery completed October 9, 2003 and directly witnessed by adjoining owners Gerald & Kathy Gruhn, at Fire No. 1279 Pine Isle Road.

Plan view map of monument location with bearing and distance ties to a minimum of four(4) described witness or reference monuments of concrete, natural stone, iron, live bearing trees or equivalent material. If applicable, also show a minimum of two(2) bearing and distance ties to any other monument found and not accepted; including the bearing and distance from the accepted monument.



WITNESS MONUMENT TIES:

- ① New 9" Pr BT N75°W 32.92'.
- ② New 12" Mr BT N40°W 38.62'.
- ③ New 10" Mr North trunk of 3 at N35°E 53.44' to PK/W in left face.
- ④ New 8" Pw BT N49°E 56.80'

Also iron pipes found SW and NE of Wit MC monument set per field survey data on reverse.

No standard white poly 'T' marker post set in lawn at corner per request of adjoining owners.

SCALE: 1" = 30'

Unless otherwise indicated, all bearing tree ties are to a .25" dia. by 2.5" long PK nail with a 1.25" dia. steel washer driven into unblazed right face and a .25" dia. by 2.5" long PK nail with a 2" dia. steel washer stamped BT is also driven into unblazed face of bearing tree at DBH; the basis for measured bearings is by compass to nearest degree and all tie distances are measured horizontal by steel tape corrected to nearest 1/100th feet at standard temperature of 68° F.

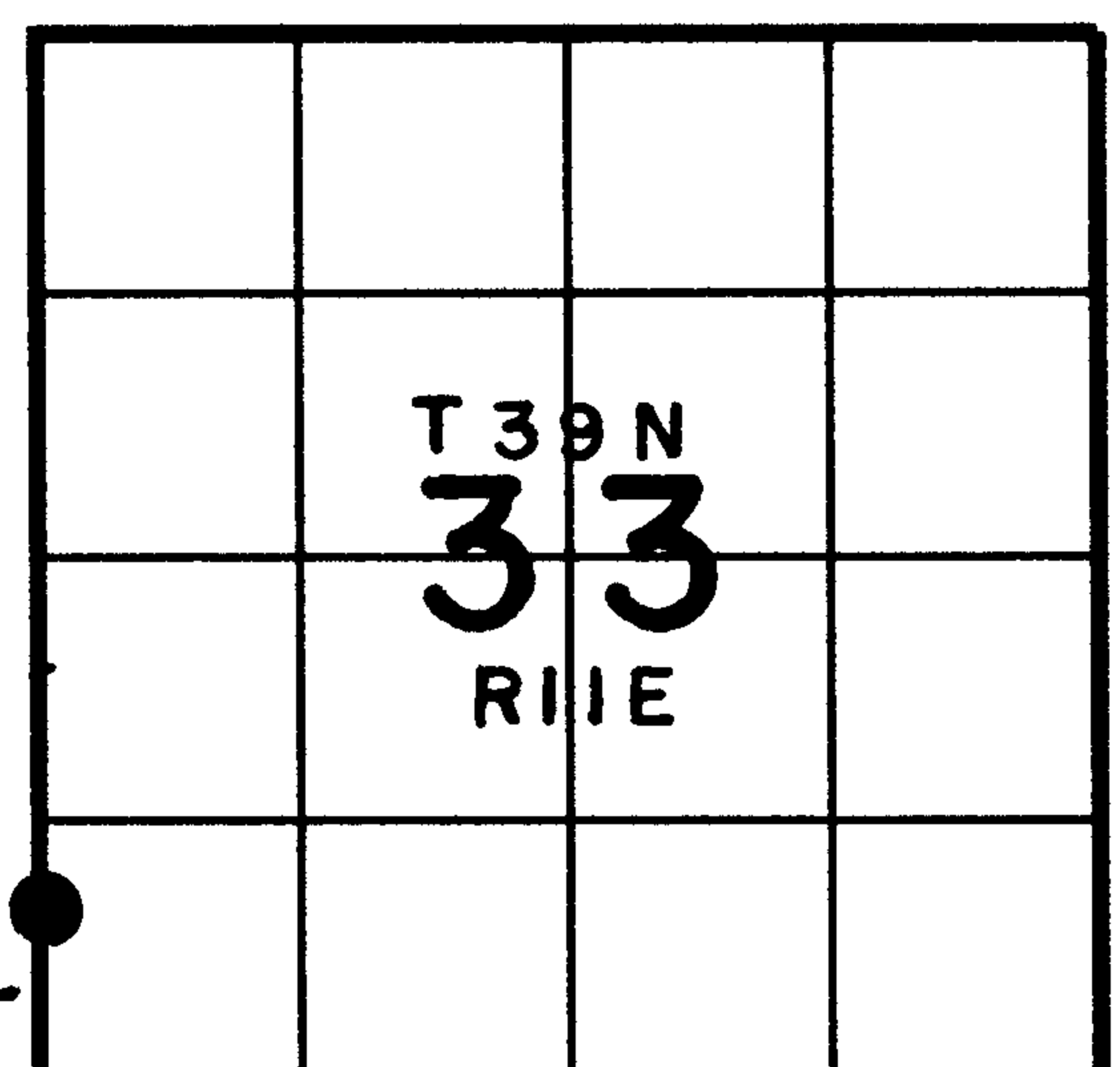
RLS SEAL:



LAND SURVEYOR CERTIFICATE:

I, William C. Rohde, hereby certify that I am duly licensed as a Professional Land Surveyor in the State of Wisconsin; that this USPLS monument location was determined by me and/or under my direct supervision and control; and that this U.S. Public Land Survey Monument Location Record is true and correct to the best of my knowledge and belief.

Signed: *William C. Rohde*
 William C. Rohde RLS 841



SECTION LOCATION MAP
 INDEX NO. Y-2 9
 3911321200

