

Stock No. 26273

U.S. PUBLIC LAND SURVEY MONUMENT RECORD

Index No. 44, X-13

State of Wisconsin

County of Oneida ss.

I, William B. Cochrane, do hereby
 certify that on the 14th day
 of February 19 90, I found
 evidence of the MC on the SW Shore of
~~Cochran~~ Bigfork Lake bet. Secs. 33&34
 Township 39, North, Range
 11 East, Fourth Principal Meridian,
 as described hereon; and that from this evidence
 I established a new monument and accessories
 as described hereon to perpetuate the original
 location of this corner.

Resident witnesses:

History of original corner establishment:

Dependent Resurvey in 1941 by Hugh B. Crawford. N3°43'E between Sections 33 and 34, at 29.49 chains, replace and iron rod with a 6 inch diameter concrete monument, 2 feet long, with an iron post in center and a brass cap marked; MC, S33, S34, T39N, R11E, 1941. From which the following bear;

Maple	6"	S6°30'E	45½ links
Maple	7"	S43°15'W	13½ links

Description of corner evidence found:

Found monument as described and in place, from which the following bears;

Maple	10"	S43°15'W	8.91 feet
-------	-----	----------	-----------

Description of monument and accessories I established to perpetuate the original location of this corner.
New reference object.

Power Pole	S23°E	21.72 feet
------------	-------	------------

Dated at Hiles, Wis., this 15th day of February, 19 90

Signature, William B. Crabtree, Title Land Surveyor
(County Surveyor, Registered Land Surveyor, or other duly authorized official) Registration No. S-1107

Office of Register of Deeds, County of _____, I hereby certify that the within instrument was filed in this office for record on the _____ day of _____, 19____ at _____ o'clock _____ M.

(Register of Deeds)

By..... Deputy

= Corner monument restored.

SECTION 34

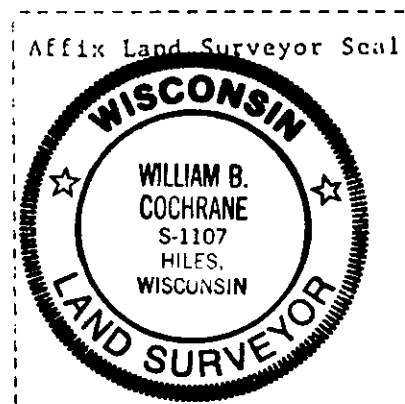
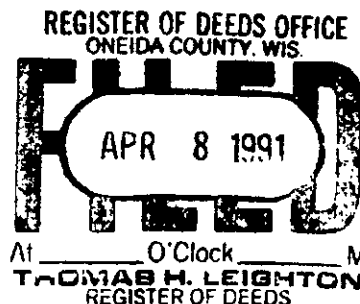
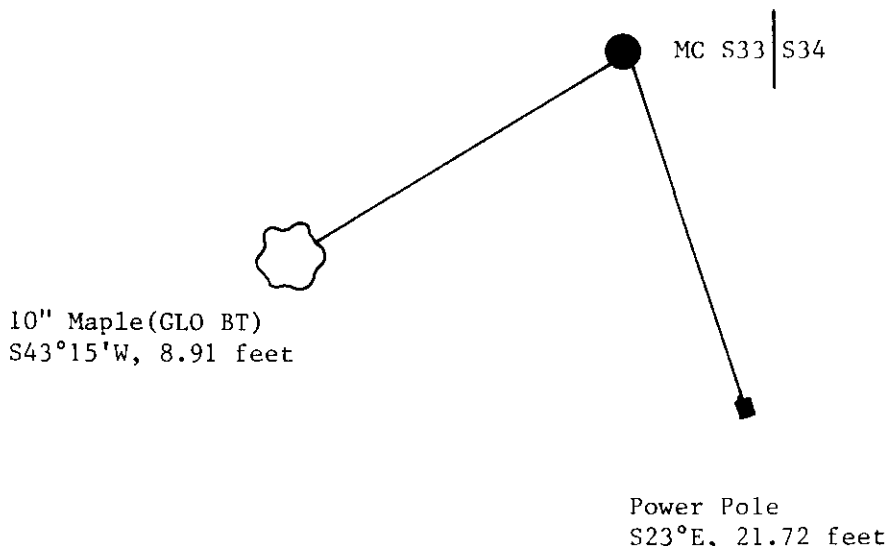
- e) Describe any material discrepancy between the location of the corner as restored or reestablished and the location of that corner as previously restored or reestablished by distance and direction. Show the discrepancy on the plan view drawing under (d), above. Show the distances between the corner as previously restored or reestablished and (1) the corner as restored or reestablished, and (2) to at least 2 of the witness monuments shown on the drawing in (d), above.

See drawing below.

- (f) Was the corner restored through acceptance of (1) an obliterated evidence location, or, (2) a found perpetuated location?

Restored through acceptance of a found perpetuated location.

- (g&h) Was the corner reestablished through lost corner proportionate methods? If so, show the method, including the directions and distances to other public land survey corners used as evidence or used for proportioning in determining the corner location?



- (i) I, William B. Cochrane
(type or print name) certify that the corner location shown on this record was determined by me or under my direction and control and that this U.S. Public Land Survey Monument Record is correct and complete to the best of my knowledge and belief.

William B. Cochrane Feb 20, 1990
Signature Date

Survey requested by; Sam Gardie 3/1/90
District Ranger Date

U.S. PUBLIC LAND SURVEY MONUMENT RECORD ADDENDUM

Note: This form is intended and designed to fulfill all requirements of the Wisconsin Administrative Code, Chapter A-E 7.08 U.S. Public Land MonumentRecord (3)(a)(b)(c)(d)(e)(f)(g)(h)(i). An additional sheet may be added if necessary to conform with said requirements.

(a) CORNER LOCATION:

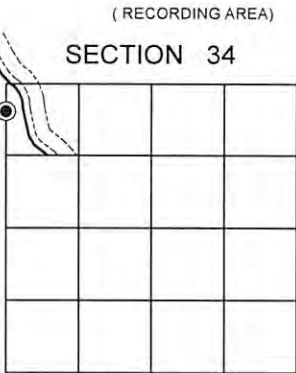
Witness Meander Corner of Section 34
Township 39 North
Range 11 East
Town of Three Lakes
County of Oneida

North:
East:
Datum:
GNSS Method:
GNSS Control:

(b) HISTORY OF ORIGINAL CORNER ESTABLISHMENT

Original Surveyor:
Date of Survey: Commenced
Completed
Original B.T.'S

SEE PREVIOUS U.S.P.L.S. MONUMENT
RECORD DATED FEBRUARY 15, 1990

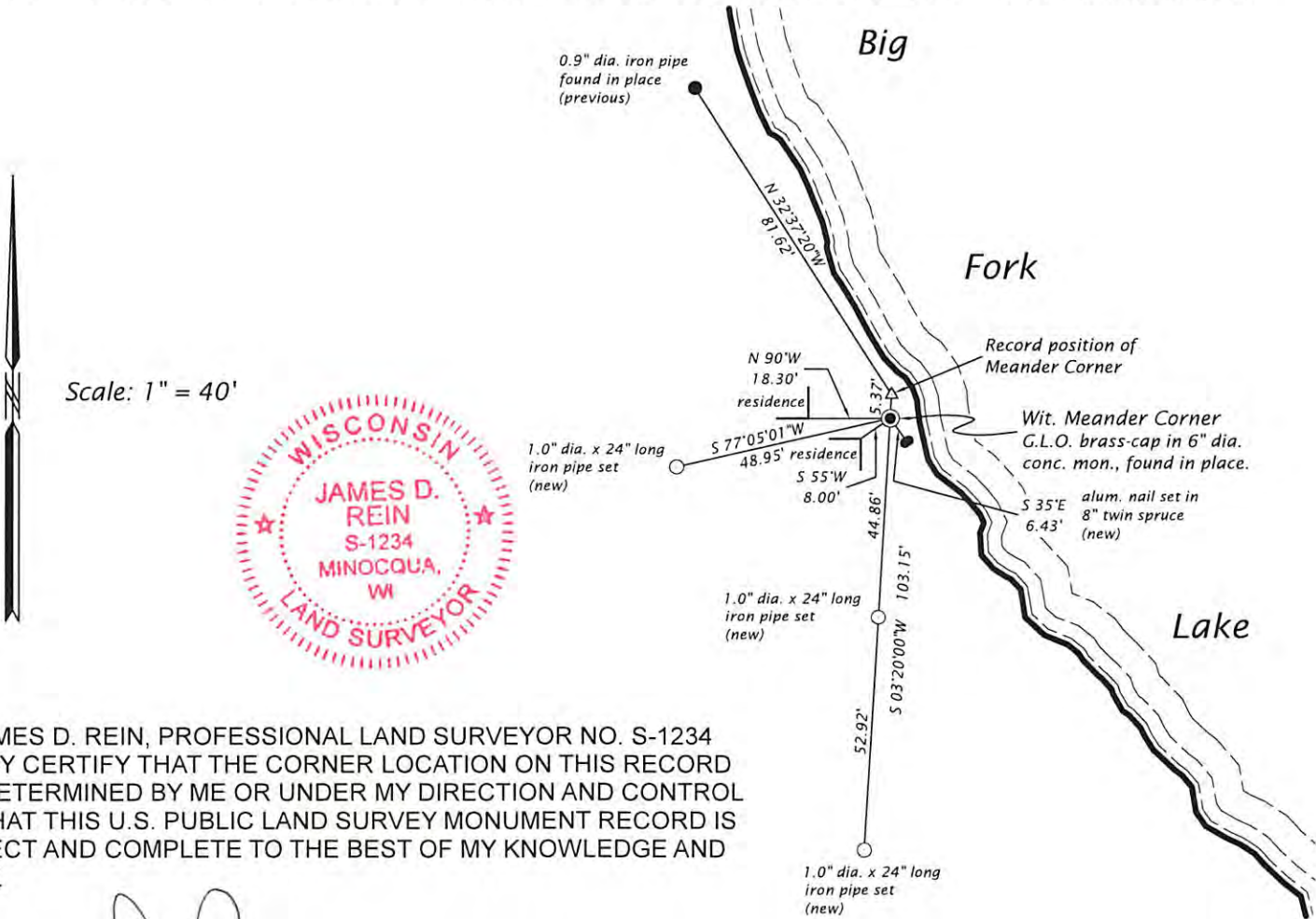


(f)(g)(h) DESCRIPTION OF MONUMENT FOUND AT THIS CORNER AND IF IT WAS ACCEPTED, STATE ALL EVIDENCE (MATERIAL, TESTIMONIAL, OCCUPATIONAL, PLATS, RECORD, OTHER MONUMENTS) USED AS A BASIS FOR ESTABLISHING LOCATION. IF NOT ACCEPTED OR IF NOTHING WAS FOUND, STATE EVIDENCE USED AS BASIS FOR ESTABLISHING LOCATION. IF REESTABLISHED THROUGH LOST CORNER PROPORTIONATE METHODS, INDICATE ALL MONUMENTS, DISTANCES AND DIRECTIONS USED TO ESTABLISH. INDICATE TYPE OF MONUMENT AND SIGN POST FOUND OR SET.

This is a perpetuation of a previous U.S.P.L.S. Monument Record by William B. Cochrane, RLS-1107, dated February 15, 1990, and filed in the office of the Oneida County Register of Deeds. A complete history of the corner can be found on the previous monument record.

July 15, 2025, James D. Rein, PLS No. 1234, we found the G.L.O. brass capped monument, based on the Oneida County published gps coordinates, had been moved 5.37 feet south on line with the one quarter corner during a recent lake shore restoration project. The monument sets flush, firmly in a stone rip rap, top bank, shore location. I decide to use the existing monument as a witness to the original meander corner position and perpetuate the witness location as follows. The prior maple and power pole references are now gone, thus we made new reference ties to the witness corner as shown in the plan.

(c)(d)(e) PLAN VIEW OF CORNER WITH TIES TO AT LEAST 4 WITNESS MONUMENTS. IF IN DISAGREEMENT WITH PREVIOUSLY ESTABLISHED CORNER, SHOW THE DISTANCE BETWEEN THE TWO CORNERS AND ALSO INDICATE THE TIES TO THE DISPUTED CORNER.



(i) I, JAMES D. REIN, PROFESSIONAL LAND SURVEYOR NO. S-1234 HEREBY CERTIFY THAT THE CORNER LOCATION ON THIS RECORD WAS DETERMINED BY ME OR UNDER MY DIRECTION AND CONTROL AND THAT THIS U.S. PUBLIC LAND SURVEY MONUMENT RECORD IS CORRECT AND COMPLETE TO THE BEST OF MY KNOWLEDGE AND BELIEF.

SIGNATURE *James D. Rein* DATE *8/18/25*