

U.S. PUBLIC LAND SURVEY MONUMENT RECORD

This form is intended and designed to fulfill all requirements of Wisconsin Administrative Code, Chapter A-E 7.08 U.S. Public Land Survey Monument Record (3) (a)(b)(c)(d)(e)(f)(g)(h)(i). An additional sheet may be added if necessary to confirm with said requirements.

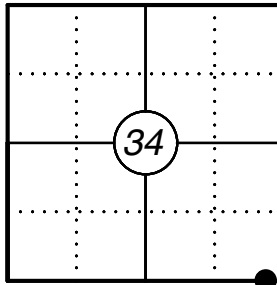
The coordinate value shown has been verified by at least one of the following methods: 1) Comparison to a previously GNSS determined published value; 2) The value is the average of two or more GNSS observations at a markedly different time; 3) one or more distances were measured back to the GNSS observed corner from temporary GNSS observed offset locations.

Oneida County
Land Information Office
Filed
3/31/2025

(a) Corner Location:

Witness MC Section 34	WISCRS - Vilas County	
Township 40 North	Meander Corner Coord:	Wit. MC Coord:
Range 5 East	N: 99827.81	N: 99827.71
Town of Lac Du Flambeau	E: 351888.03	E: 351908.03
County of Vilas	Datum: NAD 83 (2011)	
	GNSS Method: RTK Direct	
	GNSS Control: WISCORS VRS	

Corner ID: 4005340002



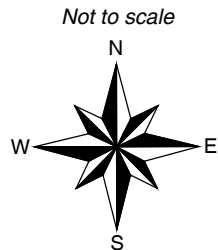
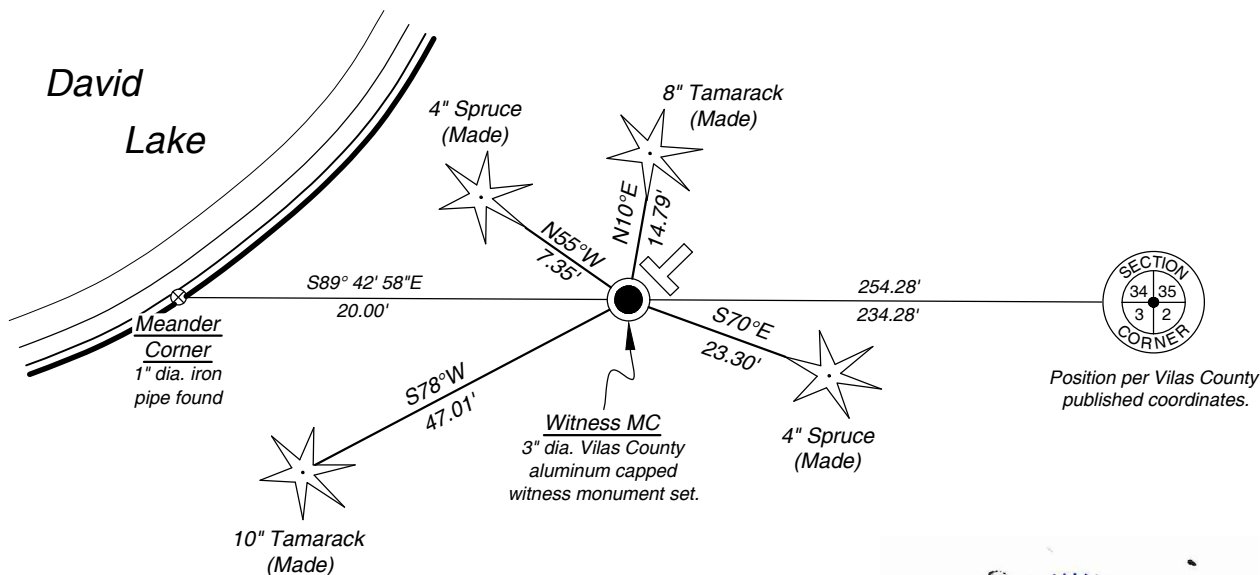
(b) History of Original Corner:

Original Surveyor: Alfred Millard	Original B.T.'s: Spruce 8 N73°E 85 links
Date of Survey: September 1860	Spruce 4 S48°W 57 links

(f)(g)(h) Description of monument found at this corner and if it was accepted, state all evidence (material, testimonial, occupational, plats, records, other monuments) used as a basis for establishing location. If reestablishing through lost corner proportionate methods, indicate all monuments, distances, and directions used to establish. Indicate type of monument and sign post found or set.

03/02/1955 E. Kowalke, Survey map B8446 shows a distance of 281' to lake no monument shown.
12/08/1995 James D. Rein Survey map C1203 (Oneida County) shows 1" dia. iron pipe found on south line of Section 34, 254.28' west of section corner.
06/22/2009 James D. Rein, Survey map C2644 (Oneida County) shows 1" dia. iron pipe found on south line of Section 34, 254.28' west of section corner.
11/22/2024 As part of a Vilas County Remonumentation project, I found a 1" iron pipe in standing water near the easterly shoreline of David Lake. I set a 3" dia. Vilas County aluminum capped witness monument on the section line and 20.00' east of the 1" dia. iron pipe found. I made four bearing trees to the reference the witness meander corner as shown below.

(c)(d)(e) Plan view of corner with ties to at least four witnesses. If in disagreement with previously established corner, show the distances between the two corners and also indicate the tie to the disputed corner.



Not to scale

* Vinyl "T" post 0.8' northeast of corner.

* Distances to bearing trees are to nail in side.



Certification

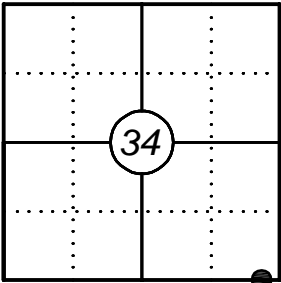
I, Gregory S. Maines, Professional Land Surveyor No. 2729, hereby certify that the corner location on this record was referenced by me or under my direction and control and that this U.S. Public Land Survey Monument Record is complete to the best of my knowledge and belief.

Index No.:

U.S. PUBLIC LAND SURVEY MONUMENT GNSS OBSERVATION RECORD

The coordinate value shown has been verified by at least one of the following methods:
1) Comparison to a previously GNSS determined published value.
2) The value is the average of two or more GNSS observations at a markedly different time.
3) One or more distances were measured back to the GNSS observed corner from temporary GNSS observed offset locations.

Corner ID: 4005340002

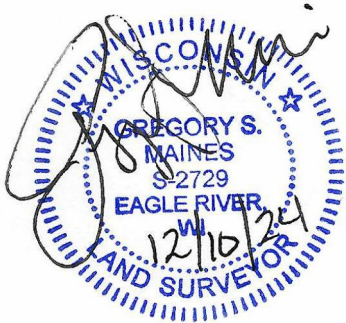


Observation Date: 11/22/2024	WISCRS - Vilas County	Meander Corner Coord: Wit. MC Coord:
Witness MC Section 34	N: 99827.81	N: 99827.71
Township 40 North	E: 351888.03	E: 351908.03
Range 5 East	Datum: NAD 83 (2011)	
Town of Lac Du Flambeau	GNSS Method: RTK Direct	
County of Vilas	GNSS Control: WISCORS VRS	

Site Photo



Monument Photo



I certify that I have surveyed the above location and that the information contained hereon is correct to the best of my knowledge and belief. The intent of this form is to add supplemental information to the chain of record for this corner. Please refer to the USPLS monument record for primary information.