

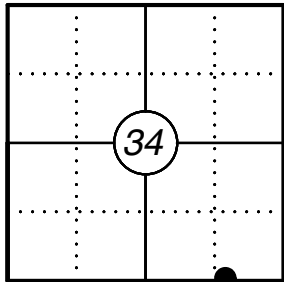
U.S. PUBLIC LAND SURVEY MONUMENT RECORD

This form is intended and designed to fulfill all requirements of Wisconsin Administrative Code, Chapter A-E 7.08 U.S. Public Land Survey Monument Record (3) (a)(b)(c)(d)(e)(f)(g)(h)(i). An additional sheet may be added if necessary to confirm with said requirements.

The coordinate value shown has been verified by at least one of the following methods: 1) Comparison to a previously GNSS determined published value; 2) The value is the average of two or more GNSS observations at a markedly different time; 3) one or more distances were measured back to the GNSS observed corner from temporary GNSS observed offset locations.

Oneida County
Land Information Office
Filed
3/31/2025

Corner ID: 4005340009



(a) Corner Location:

MC Section 34	WISCRS - Vilas County
Township 40 North	N: 99832.84
Range 5 East	E: 350871.76
Town of Lac Du Flambeau	Datum: NAD 83 (2011)
County of Vilas	GNSS Method: RTK Direct
	GNSS Control: WISCORS VRS

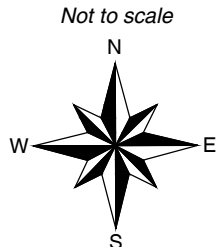
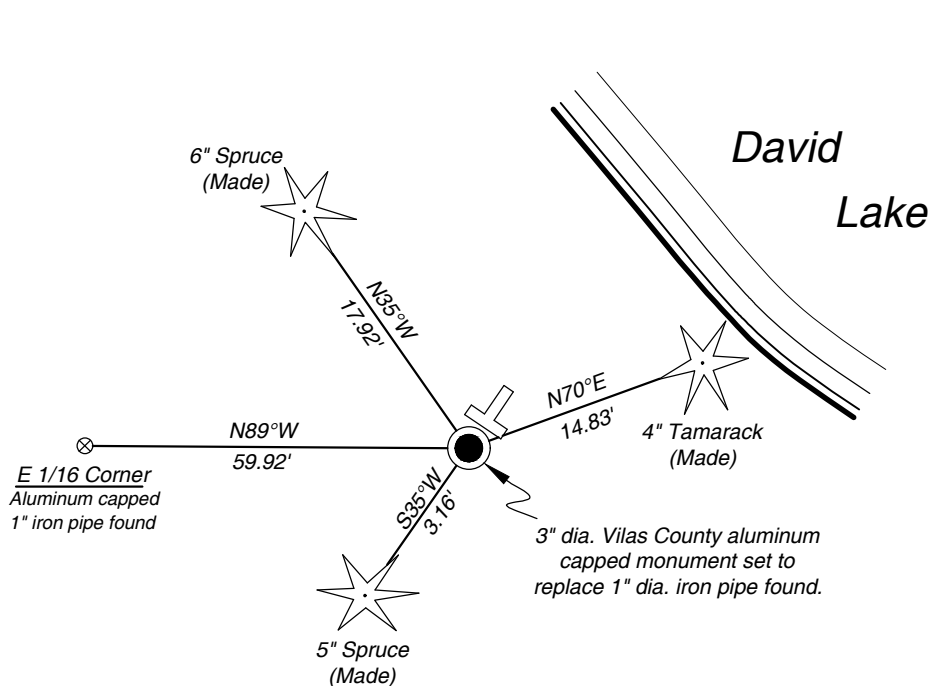
(b) History of Original Corner:

Original Surveyor: Alfred Millard	Original B.T.'s: Spruce 6 S58°W 62 links
Date of Survey: September 1860	No other timber

(f)(g)(h) Description of monument found at this corner and if it was accepted, state all evidence (material, testimonial, occupational, plats, records, other monuments) used as a basis for establishing location. If reestablishing through lost corner proportionate methods, indicate all monuments, distances, and directions used to establish. Indicate type of monument and sign post found or set.

- 03/02/1955 E. Kowalke, Survey map B8446 shows a distance of 72.5' east of 1/8 corner to lake no monument shown.
- 12/30/1983 James D. Rein Survey map C503 (revised 01/15/1985) shows a 1 1/4" iron pipe found near westerly shoreline of David Lake, 60.24' east of 1/16 Corner.
- 12/08/1995 James D. Rein Survey map C1203 (Oneida County) sets aluminum capped iron pipe for E 1/16 Corner and off calls an iron pipe 8.10' north of the 1/16 corner, does not show iron pipe near shoreline.
- 11/22/2024 As part of a Vilas County Remonumentation project, I found a 1" iron pipe at the corner location near the westerly shoreline of David Lake, and replaced it with a 3" dia. Vilas County aluminum capped monument. I used the aluminum capped iron pipe set by Rein at the E 1/16 Corner and made 3 bearing trees to witness the corner as shown below.

(c)(d)(e) Plan view of corner with ties to at least four witnesses. If in disagreement with previously established corner, show the distances between the two corners and also indicate the tie to the disputed corner.



- * Vinyl "T" post 0.8' northeast of corner.
- * Distances to bearing trees are to nail in side.



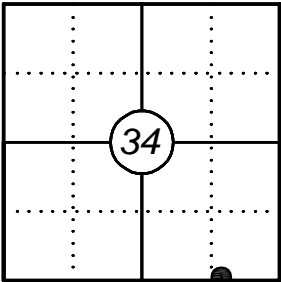
Certification

I, Gregory S. Maines, Professional Land Surveyor No. 2729, hereby certify that the corner location on this record was referenced by me or under my direction and control and that this U.S. Public Land Survey Monument Record is complete to the best of my knowledge and belief.

U.S. PUBLIC LAND SURVEY MONUMENT GNSS OBSERVATION RECORD

The coordinate value shown has been verified by at least one of the following methods:
1) Comparison to a previously GNSS determined published value.
2) The value is the average of two or more GNSS observations at a markedly different time.
3) One or more distances were measured back to the GNSS observed corner from temporary GNSS observed offset locations.

Corner ID: 4005340009

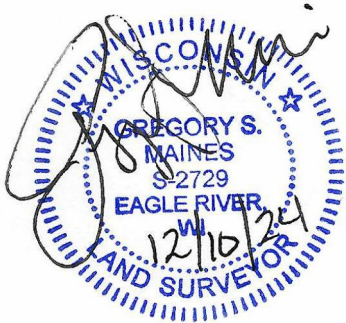


Observation Date: 11/22/2024	WISCRS - Vilas County
MC Section 34	N: 99832.84
Township 40 North	E: 350871.76
Range 5 East	Datum: NAD 83 (2011)
Town of Lac Du Flambeau	GNSS Method: RTK Direct
County of Vilas	GNSS Control: WISCORS VRS

Site Photo



Monument Photo



I certify that I have surveyed the above location and that the information contained hereon is correct to the best of my knowledge and belief. The intent of this form is to add supplemental information to the chain of record for this corner. Please refer to the USPLS monument record for primary information.