

U.S. PUBLIC LAND SURVEY MONUMENT RECORD

This form is intended and designed to fulfill all requirements of Wisconsin Administrative Code, Chapter A-E 7.08 U.S. Public Land Survey Monument Record (3) (a)(b)(c)(d)(e)(f)(g)(h)(i). An additional sheet may be added if necessary to confirm with said requirements.

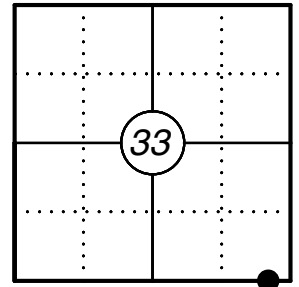
The coordinate value shown has been verified by at least one of the following methods: 1) Comparison to a previously GNSS determined published value; 2) The value is the average of two or more GNSS observations at a markedly different time; 3) one or more distances were measured back to the GNSS observed corner from temporary GNSS observed offset locations.

Oneida County
Land Information Office
Filed
3/31/2025

(a) Corner Location:

MC Section 33	WISCRS - Vilas County
Township 40 North	N: 99793.69
Range 7 East	E: 409179.53
Town of Arbor Vitae	Datum: NAD 83 (2011)
County of Vilas	GNSS Method: RTK Direct
	GNSS Control: WISCORS VRS

Corner ID: 4007330004



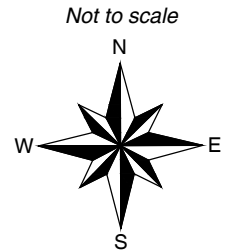
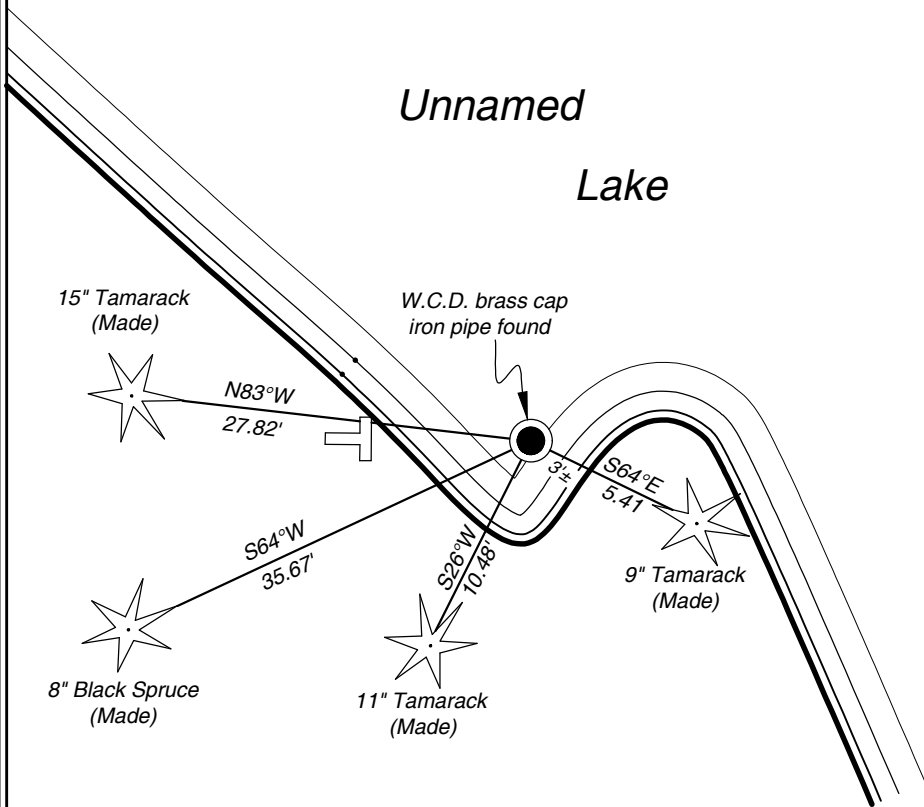
(b) History of Original Corner:

Original Surveyor: Alfred Millard	Original B.T.'s: Tamarack 6 S87°W 19lks
Date of Survey: September 1860	Tamarack 5 N71°W 64 lks

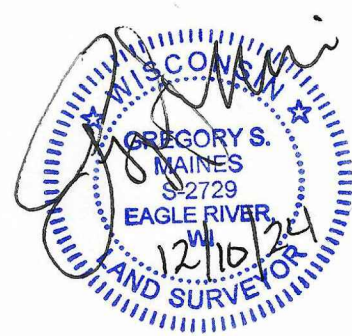
(f)(g)(h) Description of monument found at this corner and if it was accepted, state all evidence (material, testimonial, occupational, plats, records, other monuments) used as a basis for establishing location. If reestablishing through lost corner proportionate methods, indicate all monuments, distances, and directions used to establish. Indicate type of monument and sign post found or set.

- 3/31/1959 DNR notes in Survey Map # L754 (Oneida County) indicates Set W.C.D. pipe on long tam pole in marsh. No sign of org.
- 1959-1962 Alvin E. Nelson, Resurvey of T40N, R7E, Map C810, identifies corner # 37 W.C.D. brass cap T5° N19°W 41.9 lks; T3° S69°E 8.8 lks.
- 06/10/1963 Frederic H. Copp Survey Map # L663 indicates W.C.D. brass cap for meander corner.
- 1984 Seymour Survey Map C140 does not show monument at corner location.
- 11/08/2024 As part of a Vilas County Remonumentation Project I found and accepted a W.C.D. brass capped iron pipe at the corner location, submerged but stable, 3' ± offshore in an unnamed lake. I drove a 4" Tamarack pole alongside the monument to stabilize it, and made four bearing trees to witness the corner as shown below.

(c)(d)(e) Plan view of corner with ties to at least four witnesses. If in disagreement with previously established corner, show the distances between the two corners and also indicate the tie to the disputed corner.



- * Vinyl "T" post 8' west of corner.
- * Distances to bearing trees are to nail in side.



Certification

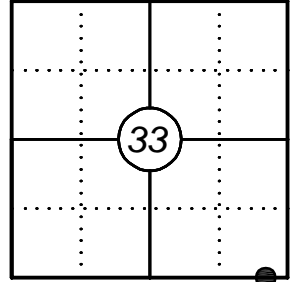
I, Gregory S. Maines, Professional Land Surveyor No. 2729, hereby certify that the corner location on this record was referenced by me or under my direction and control and that this U.S. Public Land Survey Monument Record is complete to the best of my knowledge and belief.

U.S. PUBLIC LAND SURVEY MONUMENT GNSS OBSERVATION RECORD

The coordinate value shown has been verified by at least one of the following methods:

- 1) Comparison to a previously GNSS determined published value.
- 2) The value is the average of two or more GNSS observations at a markedly different time.
- 3) One or more distances were measured back to the GNSS observed corner from temporary GNSS observed offset locations.

Corner ID: 4007330004



Observation Date: 11/08/2024

MC Section 33

Township 40 North

Range 7 East

Town of Arbor Vitae

County of Vilas

WISCRS - Vilas County

N: 99793.69

E: 409179.53

Datum: NAD 83 (2011)

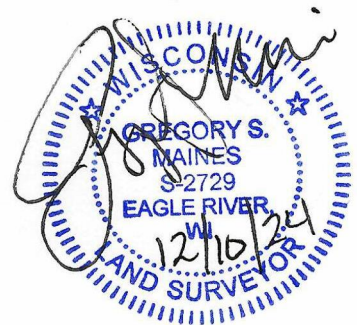
GNSS Method: RTK Direct

GNSS Control: WISCORS VRS

Site Photo



Monument Photo



I certify that I have surveyed the above location and that the information contained hereon is correct to the best of my knowledge and belief. The intent of this form is to add supplemental information to the chain of record for this corner. Please refer to the USPLS monument record for primary information.

Index No.: