

State of Wisconsin

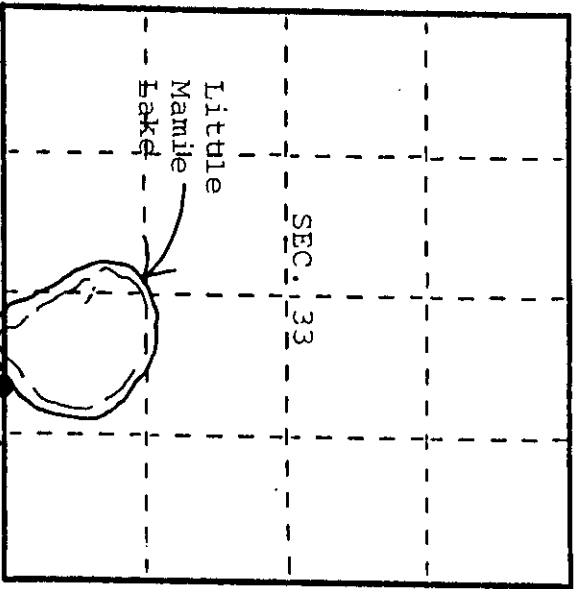
County of Vilas } ss.

I, Stephen J. Favorite, do hereby certify that on the 27th day of October, 1988, I found evidence of the Meander corner of Section 33 Township 4C, North, Range 8 East, Fourth Principal Meridian, as described hereon; and that from this evidence I established a new monument and accessories as described hereon to perpetuate the original location of this corner.

Resident witnesses:

Jonathan Favorite
Mike Stevens

T40N R8E



U.S. Public Land Survey Monument Record

History of original corner establishment:
Corner not set on the original survey of the Township.

Index No.

Handwritten index number: A-11212 34-12

Description of corner evidence found:
Found 1 1/2" x 36" iron pipe in place as shown on Northwoods Surveyors, Inc. Survey by John H. Fisher, dated Aug. 1974.

Description of monument and accessories I established to perpetuate the original location of this corner.
Replaced iron pipe with a 2 1/2" x 36" Vilas County aluminum monument.

- Bearing Trees Made: 6" Oak S570 W 9.27', 16" Oak S120 W 22.84', 28" Tr. Oak S700 E 19.04', 4" Oak N80° E 27.40'
Set wood post East, 1'

Dated at Eagle River, Wis., this 16th day of April, 1989
Signature: Stephen J. Favorite, Title Registered Land Surveyor, Registration No. S-1616
Office of Register of Deeds, County of Vilas, I hereby certify that the within instrument was filed in this office for record on the 19th day of April, 1989 at 10:00 A.M.

(Register of Deeds)

By: Deputy

4008330014

Describe any material discrepancy between the location of the corner as restored or reestablished and the location of that corner as previously restored or reestablished by distance and direction. Show the discrepancy on the plan view drawing under (d), above. Show the distances between the corner as previously restored or reestablished and (1) the corner as restored or reestablished, and (2) to at least 2 of the witness monuments shown on the drawing in (d), above.

None

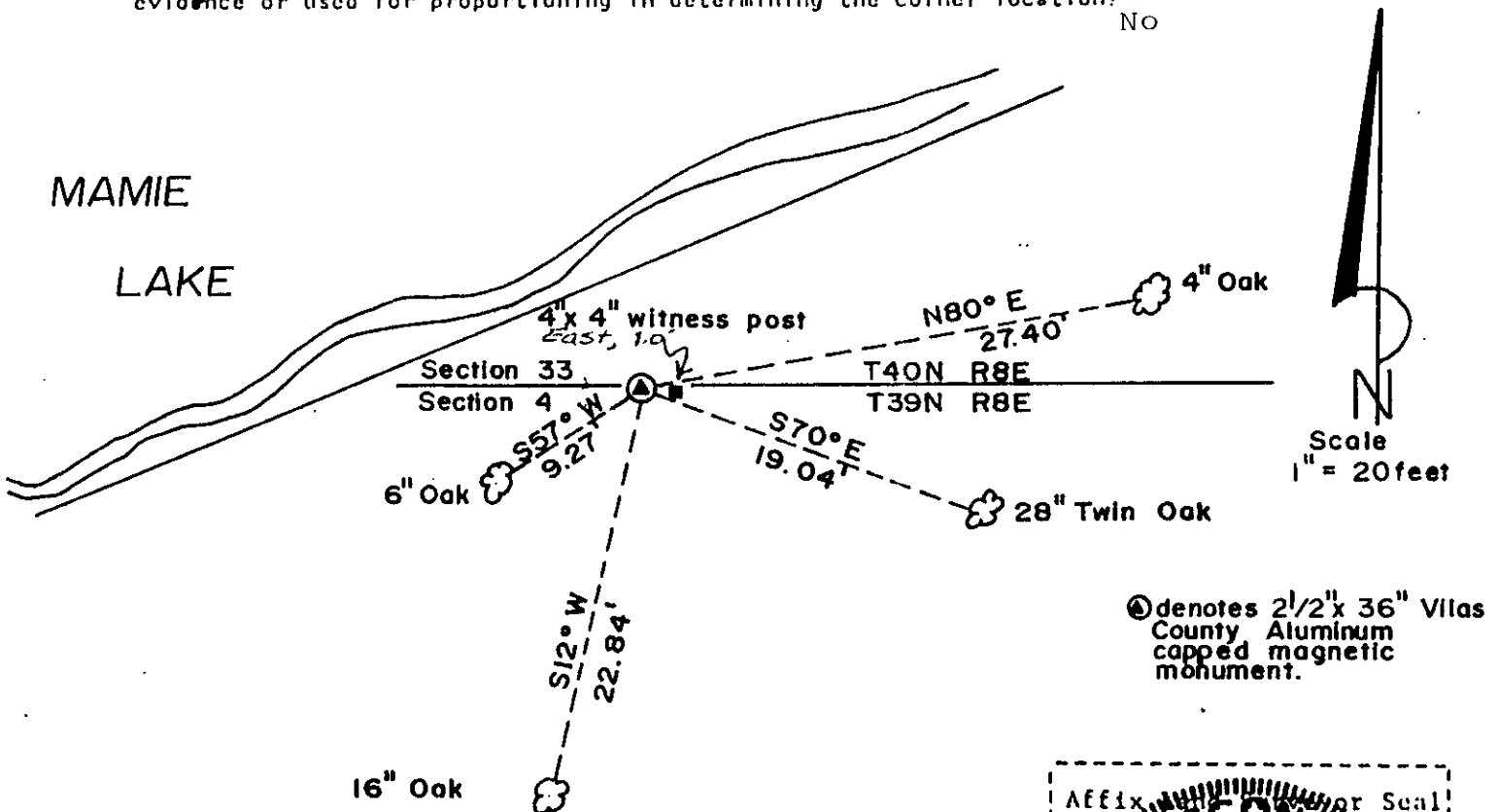
REGISTER OF DEEDS OFFICE  
ONEIDA COUNTY, WIS  
**FILED**  
JAN 17 1995  
At \_\_\_\_\_ O'Clock \_\_\_\_\_ M  
**THOMAS H. LEIGHTON**  
REGISTER OF DEEDS

Was the corner restored through acceptance of (1) an obliterated evidence location, or, (2) a found perpetuated location?

Found perpetuated location

Was the corner reestablished through lost corner proportionate methods? If so, show the method, including the directions and distances to other public land survey corners used as evidence or used for proportioning in determining the corner location?

No



I, Stephen J. Favorite RLS #S-1616  
(type or print name) certify that the corner location shown on this record was determined by me or under my direction and control and that this U.S. Public Land Survey Monument Record is correct and complete to the best of my knowledge and belief.

*Stephen J. Favorite*  
Signature

April 16, 1989  
Date

