

U.S. PUBLIC LAND SURVEY MONUMENT RECORD

Note: This form is intended and designed to fulfill all requirements of Wisconsin Administrative Code, Chapter A-R 7.08 U.S. Public Land Survey Monument Record (3)(a)(b)(c)(d)(e)(f)(g)(h)(i). An additional sheet may be added if necessary to conform with said requirements.

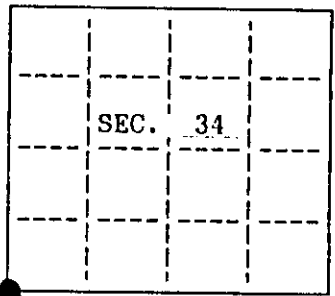
(a) CORNER LOCATION: State Plane Coordinates

Southwest corner of Sec. 34 X _____

Township 40 North Y _____

Range 9 East Datum Base _____

Town/City Cloverland County of Vilas



(b) HISTORY OF ORIGINAL CORNER ESTABLISHMENT Original B.T.'S

Original Surveyor: Artemus Curtis

Date of Survey: Commenced July 27, 1859

Completed July 28, 1859

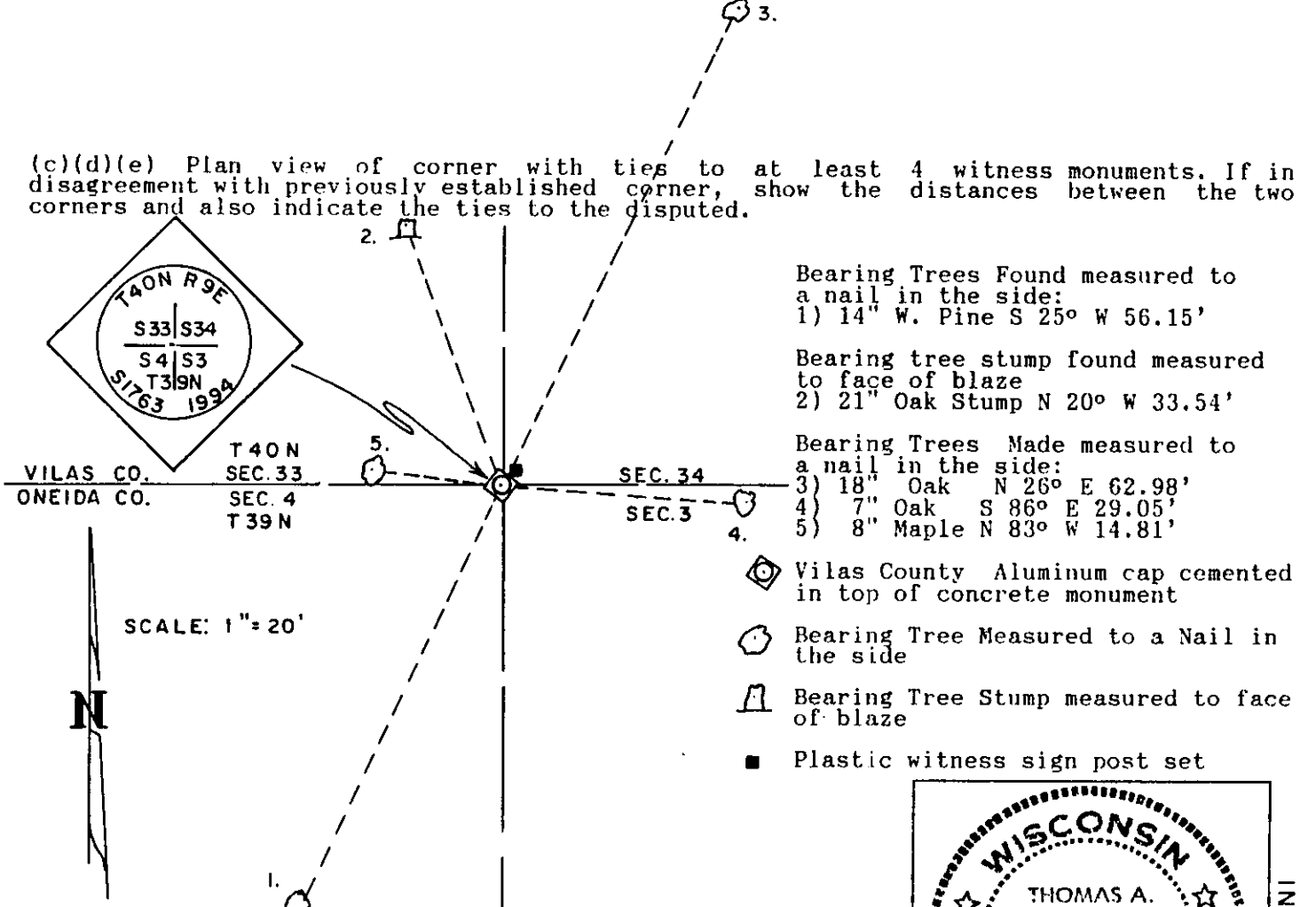
6" Maple N 14° W 19 Lks.
8" Fir N 50° E 49 Lks.
10" Maple S 58° E 30 Lks.
10" fir S 23° W 32 Lks.

(b)(f)(g)(h) Description of monument found at this corner and if it was accepted, state all evidence (material, testimonial, occupational, plats, records, other monuments) used as a basis for accepting. If not accepted or if nothing was found, state evidence used as basis for establishing location. If reestablished through lost corner proportionate methods, indicate all monuments, distances and directions used to establish. Indicate type of monument and sign post found or set.

2/13/56 Robert E. Badow found concrete monument and accepts this as the Section Corner position. He also shows the following Bearing Trees on his survey map:
8" Oak N 24° W 33.5' 6" W. Pine S 22°-30' W 56'

6/21/94 I, Thomas A. Boettcher found the above mentioned 5" x 5" concrete monument in fair condition with a P.K. nail in the top extending 9" above the ground. Found both bearing trees as listed above, the W. Pine is still live but the Oak has been cut and is only a stump. These are shown below. Set an Aluminum magnetic cap into a hole drilled into the top of the concrete monument and stamped as shown below. Made three new bearing trees as shown below and set a plastic sign post 1.0' Northeast of the corner

(c)(d)(e) Plan view of corner with ties to at least 4 witness monuments. If in disagreement with previously established corner, show the distances between the two corners and also indicate the ties to the disputed.

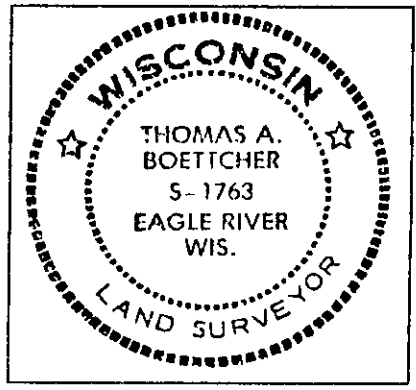


- Bearing Trees Found measured to a nail in the side:
- 1) 14" W. Pine S 25° W 56.15'
- Bearing tree stump found measured to face of blaze
- 2) 21" Oak Stump N 20° W 33.54'
- Bearing Trees Made measured to a nail in the side:
- 3) 18" Oak N 26° E 62.98'
 - 4) 7" Oak S 86° E 29.05'
 - 5) 8" Maple N 83° W 14.81'
- ◆ Vilas County Aluminum cap cemented in top of concrete monument
 - Bearing Tree Measured to a Nail in the side
 - ⌒ Bearing Tree Stump measured to face of blaze
 - Plastic witness sign post set

(i) I, Thomas A. Boettcher hereby certify that the corner location on this record was determined by me or under my direction and control and that this U.S. Public Land Survey Monument Record is correct and complete to the best of my knowledge and belief.

Signature *Thomas A. Boettcher*

Date 6-30-94



INDEX NO. 215
file in 3909 A-13

4009330000