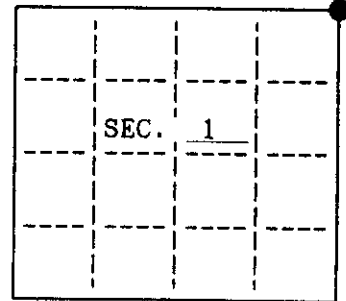


U.S. PUBLIC LAND SURVEY MONUMENT RECORD

Note: This form is intended and designed to fulfill all requirements of Wisconsin Administrative Code, Chapter A-E 7.08 U.S. Public Land Survey Monument Record (3)(a)(b)(c)(d)(e)(f)(g)(h)(i). An additional sheet may be added if necessary to conform with said requirements.

(a) CORNER LOCATION: State Plane Coordinates
 Northeast corner of Sec. 1 X N/A
 Township 39 North Y N/A
 Range 10 East Datum Base None
 Town/City Lincoln County of Vilas



(b) HISTORY OF ORIGINAL CORNER ESTABLISHMENT

Original Surveyor: W.C. Fellows
 Date of Survey: Commenced July 25, 1859
 Completed July 25, 1859

Original B.T.'S
 16" Y. Pine S 88° W 1348 lks.
 16" Y. Pine N 79° W 1323 lks.
 12" Y. Pine N 78° E 254 lks.
 12" Tamarack S 16° E 227 lks.

(b)(f)(g)(h) Description of monument found at this corner and if it was accepted, state all evidence (material, testimonial, occupational, plats, records, other monuments) used as a basis for accepting. If not accepted or if nothing was found, state evidence used as basis for establishing location. If reestablished through lost corner proportionate methods, indicate all monuments, distances and directions used to establish. Indicate type of monument and sign post found or set.

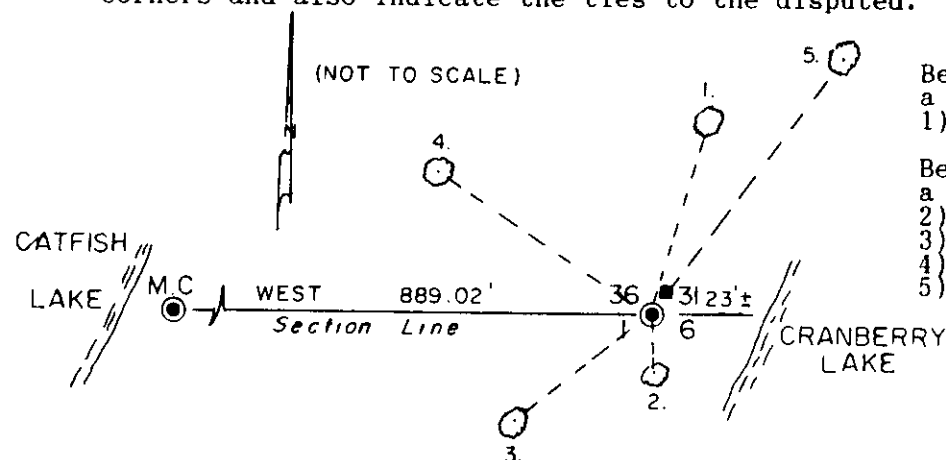
1947: H.S. Tuttle found a wood stake and the following bearing trees;
 6" Sugar S 20° W 5.0' & 10" W. Pine N 16° E 29.5'

Sept. 1972: Robert Badow found Tuttle's wood stake and set a 1" iron pipe.

May 1981: James Will found Badow's 1" iron pipe and Tuttle's pine bearing tree.

March 28, 1994: I, Michael Weber, found Robert Badow's 1" iron pipe 23 feet from the lake. I also found the bearing tree as listed below. I replaced the 1" iron pipe with a Vilas County aluminum capped monument stamped to identify the corner. I made four new bearing trees as shown below and set a plastic sign post 1.0' northeast of the corner.

(c)(d)(e) Plan view of corner with ties to at least 4 witness monuments. If in disagreement with previously established corner, show the distances between the two corners and also indicate the ties to the disputed.



Bearing trees found measured to a nail in the side:
 1) 22" White Pine N 16° E 31.30'

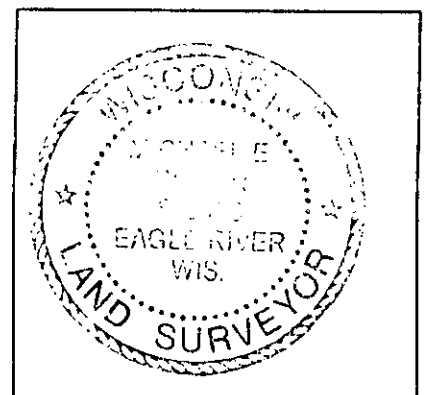
Bearing trees made measured to a nail in the side:
 2) 14" Maple S 2° E 4.04'
 3) 10" Oak S 51° W 19.20'
 4) 6" White Pine N 56° W 23.97'
 5) 12" White Pine N 36° E 44.80'

- Vilas County Aluminum monument set
- Bearing tree measured to a nail in the side
- Plastic witness sign post set

(i) I, Michael E. Weber, R.L.S. #2070 hereby certify that the corner location on this record was determined by me or under my direction and control and that this U.S. Public Land Survey Monument Record is correct and complete to the best of my knowledge and belief.

Signature Michael E. Weber

Date March 31, 1994



VILAS COUNTY GPS OBSERVATION RECORD

Corner ID: 4010360000 Sec 36 , T 40 N, R 10 E

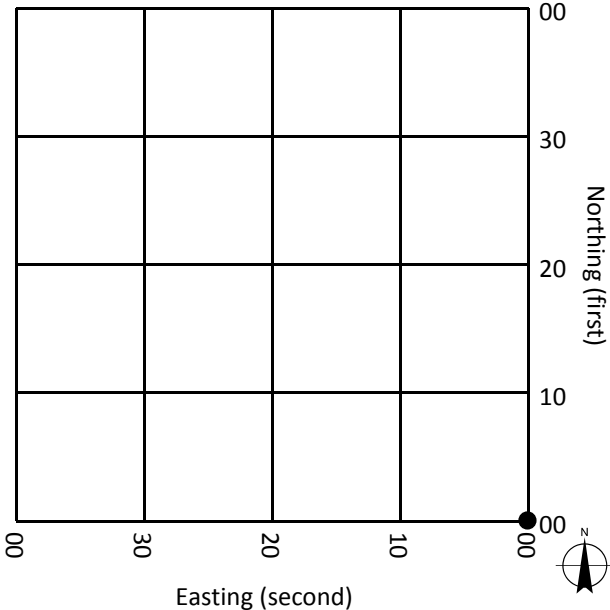
Observation 1

Date: 5/25/2017 Time: 8:56
Length of Observation (Seconds): 180
Type (RTK, Static, Etc.): RTK
Base Station: CORS NETWORK

Observation 2

Date: 5/7/2015 Time: 12:53
Length of Observation (Seconds): 180
Type (RTK, Static, Etc.): RTK
Base Station: CORS NETWORK

Monument Location:



Site Notes (FD/Not FD, Type, Condition, Obstructions, GPS Observable, Equipment, Etc.):

FOUND ALUMINUM MONUMENT IN GOOD CONDITION AS DESCRIBED. FOUND 1 1/4" IRON PIPE 2.0' EAST ON EXTENDED SECTION LINE. MC 24' EAST HAS BEEN WASHED OUT. SEE USPLSS MONUMENT RECORD FOR DETAILS.



Monument Photo



Site Photo

Vilas County Coordinate System

Datum: NAD83 (WISCRS)
North (USFT): 100193.28
East (USFT): 520197.52
Owner (Vilas Co., USGS, NGS, WiDOT, Etc.):
USPLSS



Surveyor: Tony Jones
Date: 5/26/2017

I certify that I have surveyed the above location and that the information contained hereon is correct to the best of my knowledge and belief. The intent of this form is to add supplemental information to the chain of record for the above point. Please refer to the USPLSS monument record for primary information.

DISCLAIMER: This observation record and the corresponding coordinates are intended to be used for parcel mapping purposes only and do not represent an accurate land survey or boundary survey. The coordinate data was obtained using RTK GPS and the Wisconsin Continuously Operating Reference Stations. Vilas County in no way warrants the accuracy of this record or coordinate data and is not responsible for any use of this data in the location of property boundaries, property corners or public land survey system corners.