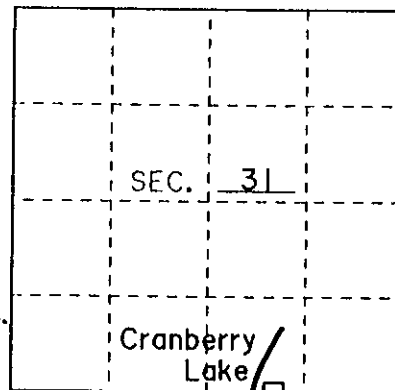


# U.S. PUBLIC LAND SURVEY MONUMENT RECORD

Note: This form is intended and designed to fulfill all requirements of Wisconsin Administrative Code, Chapter A-E 7.08 U.S. Public Land Monument Record (3)(a)(b)(c)(d)(e)(f)(g)(h)(i). An additional sheet may be added if necessary to conform with said requirements.

(a) CORNER LOCATION: South Line County or State Plane Coordinates  
Meander Corner of Section 31 Northing \_\_\_\_\_  
 Township 40 North Easting \_\_\_\_\_  
 Range 11 East Datum Base \_\_\_\_\_  
 Township/City Washington County of Vilas



(b) HISTORY OF ORIGINAL CORNER ESTABLISHMENT Original B.T.'s  
 Original Surveyor: H.C. FELLOWS 10" Tamarack N 10° E 20 Lks.  
 Date of Survey: July 26, 1859 8" Birch S 45° E 40 Lks.

(b)(f)(g)(h) Description of monument found at this corner and if it was accepted, state all evidence (material, testimonial, occupational, plats, records, other monuments) used as a basis for accepting. If not accepted or if nothing was found, state evidence used as basis for establishing location. If reestablished through lost corner proportionate methods, indicate all monuments, distances and directions used to establish. Indicate type of monument and sign post found or set.

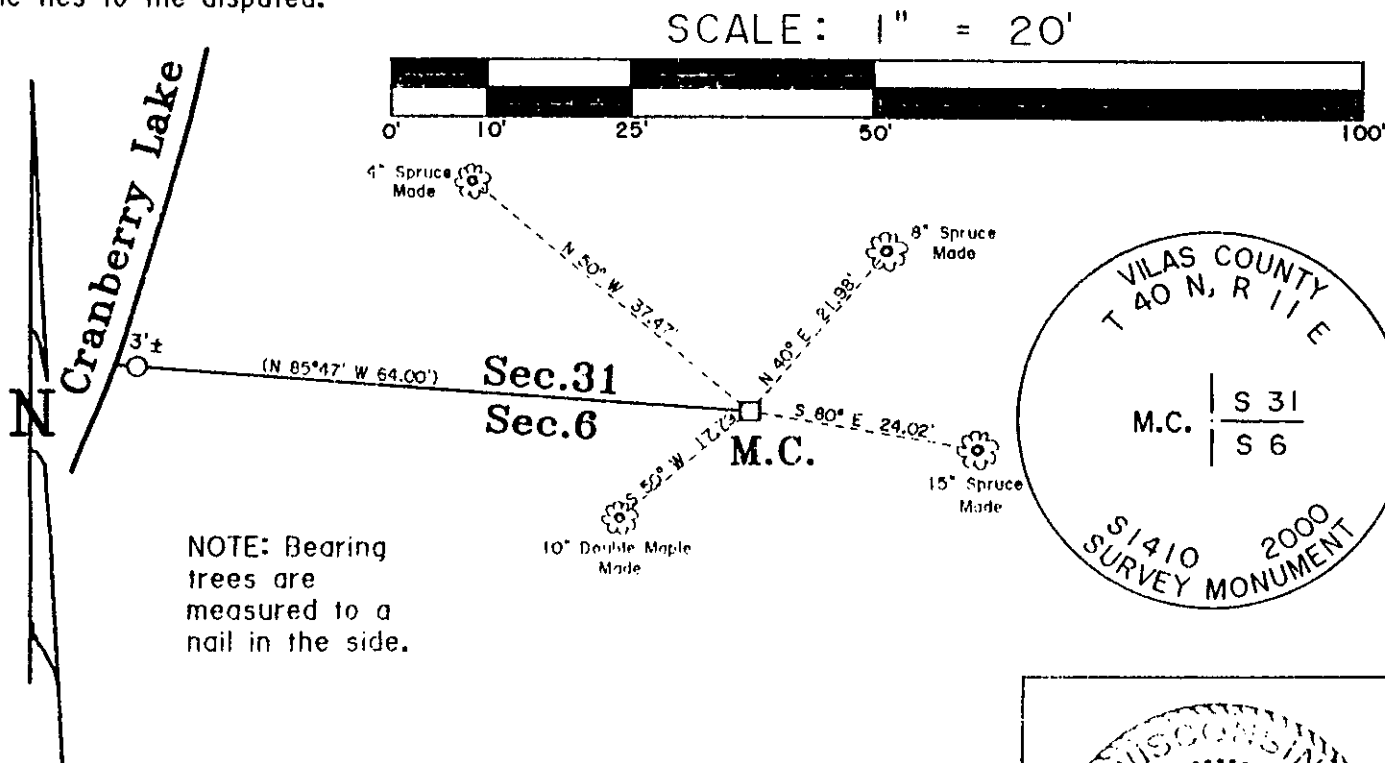
2/2/49: J.M. Abernathy of Genisot & Assoc. found a concrete monument on the Section line in his survey map H395-1, Vilas County File HB328.

6/16/66: Robert Badow of Genisot & Assoc. found a concrete monument in his survey map H1019, Vilas County File HB356.

9/9/74: Robert Badow found the same concrete monument. His map H528C shows an iron pipe bearing N85°47' W 64.00 feet.

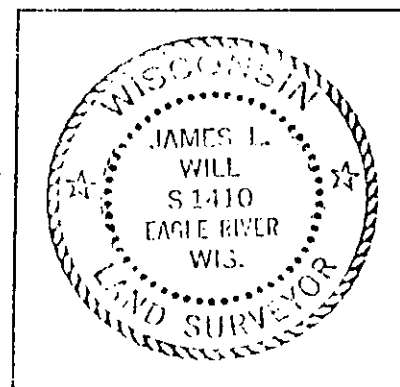
2/18/00: I James L. Will, found a concrete monument leaning west flush with the ground. I also found the above mentioned iron pipe 64.00 feet Northwest of the corner as shown below. I found no evidence of old bearing trees. I made four new ones as shown below. I drilled a hole in the center of the concrete and placed an aluminum cap stamped to identify the corner as shown below. I blazed the trees and set a sign post 3 feet S 60° E.

(c)(d)(e) Plan view of the corner with ties to at least 4 witness monuments. If in disagreement with previously established corner, show the distances between the two corners and also indicate the ties to the disputed.



(i) I, JAMES L. WILL R.L.S. No. S1410  
 hereby certify that the corner location on this record was determined by me or under my direction and control and that this U.S. Public Land Survey Monument Record is correct and complete to the best of my knowledge and belief.

Signature [Signature] Date 2-18-00



Index No. 734

H011310013  
 COPY From Vilas County MGR