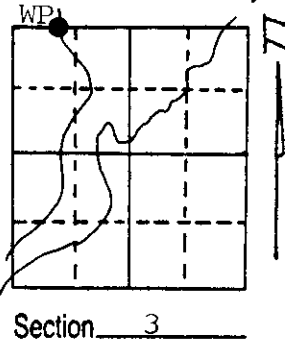
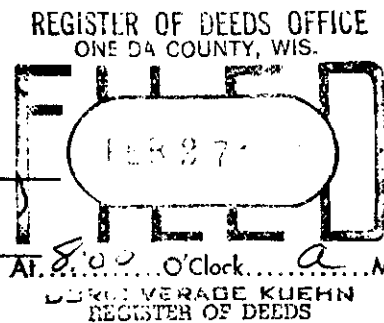


U.S. PUBLIC LAND SURVEY MONUMENT RECORD

Note: This form is intended and designed to fulfill all requirements of Wisconsin Administrative Code, Chapter A-E 5.02, U.S. Public Land Survey Monument Record (3) (a) (b) (c) (d) (e) (f) (g) (h) (i). An additional sheet may be added if necessary to conform with said requirements.

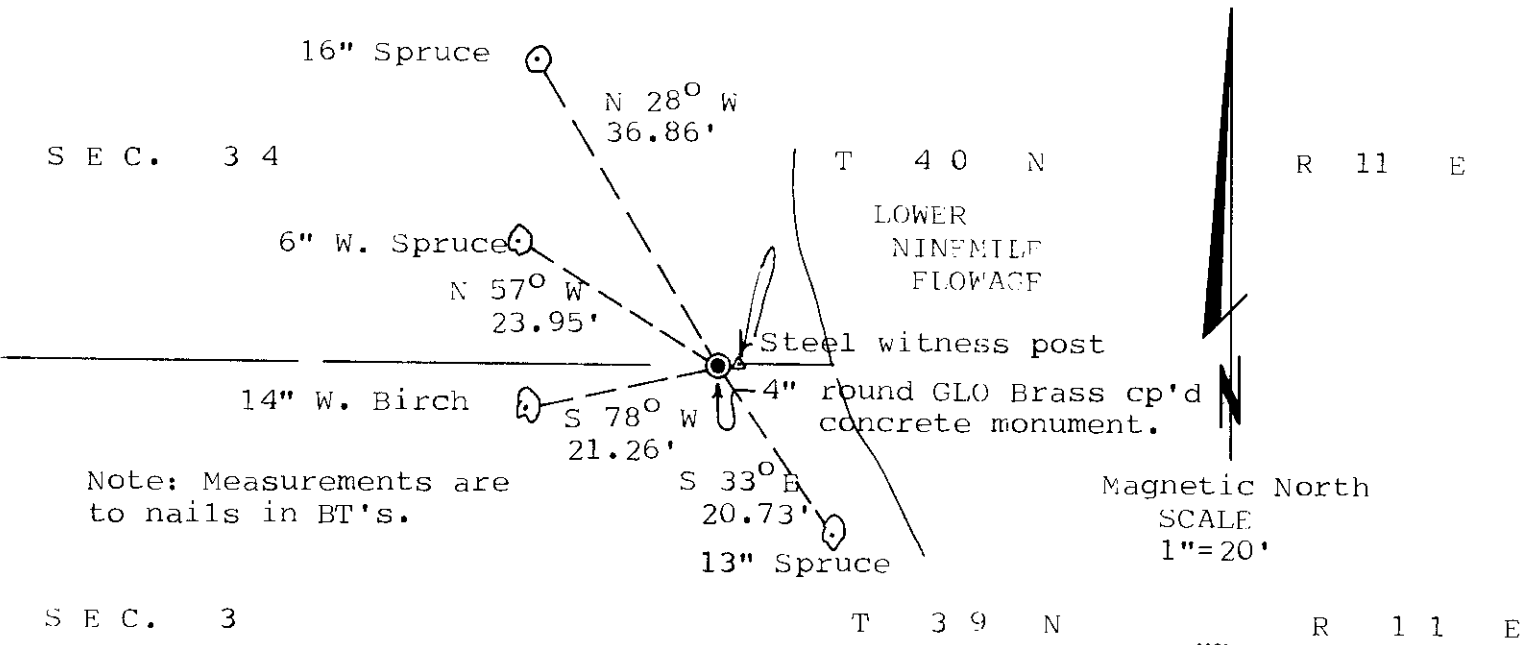
(a) Corner location: Township 39 North
 Range 11 East West
 Town/City/Village Three Lakes
 County Oneida



(b) (f) (g) (h) Description of monument found at this corner and if it was accepted, state all evidence (material, testimonial, occupational, plats, records, other monuments) used as a basis for accepting. If not accepted or if nothing was found, state evidence used as basis for establishing location. If reestablished through lost corner proportionate methods, indicate all monuments, distances and directions used to establish.

1939- G.L.O. Dependent Resurvey by Hugh Crawford established this Witness Point near the west edge of Lower Nine Mile flowage. Set a 4" diam. round concrete monument and bearing trees were made:
 8" W. Birch S 12 1/2° W, 18 lks; 8" W. Birch N 51 1/4° W, 40 lks.
 1982- Gary Pisoni recovered the corner and made new BT's: 13" Spruce S 28° E, 20.73'; 10" W. Birch S 78° W, 21.26'; 13" Spruce N 28° W, 36.86'.
 February 20, 1987.- I recovered the 4" diam. round G.L.O. Brass capped concrete monument in good physical condition. Recovered the following BT's in good condition: 14" Spruce S 33° E, 20.73'; 14" W. Birch S 78° W, 21.26'; 16" Spruce N 30° W, 36.86'.
 BT found in poor condition: 12" W. Birch N 51° W, 26.40'.
 Found steel witness post East, 1'.
 Blazed and scribed the following new bearing tree:
 6" W. Spruce N 57° W, 23.95'.
 (See diagram below for location and identification.)

(c) (d) (e) Plan view of corner with ties to at least 4 witness monuments. If in disagreement with previously established corner, show the distances between the two corners and also indicate the ties to the disputed corner.



(i) I, Stephen J. Favorite, RLS #S-1616,
 (type or print name) certify that the corner location on this record was determined by me or under my direction and control and that this U.S. Public Land Survey Monument Record is correct and complete to the best of my knowledge and belief.

Stephen J. Favorite Signature Feb. 24, 1987 Date



Index No. A-14

4011340033