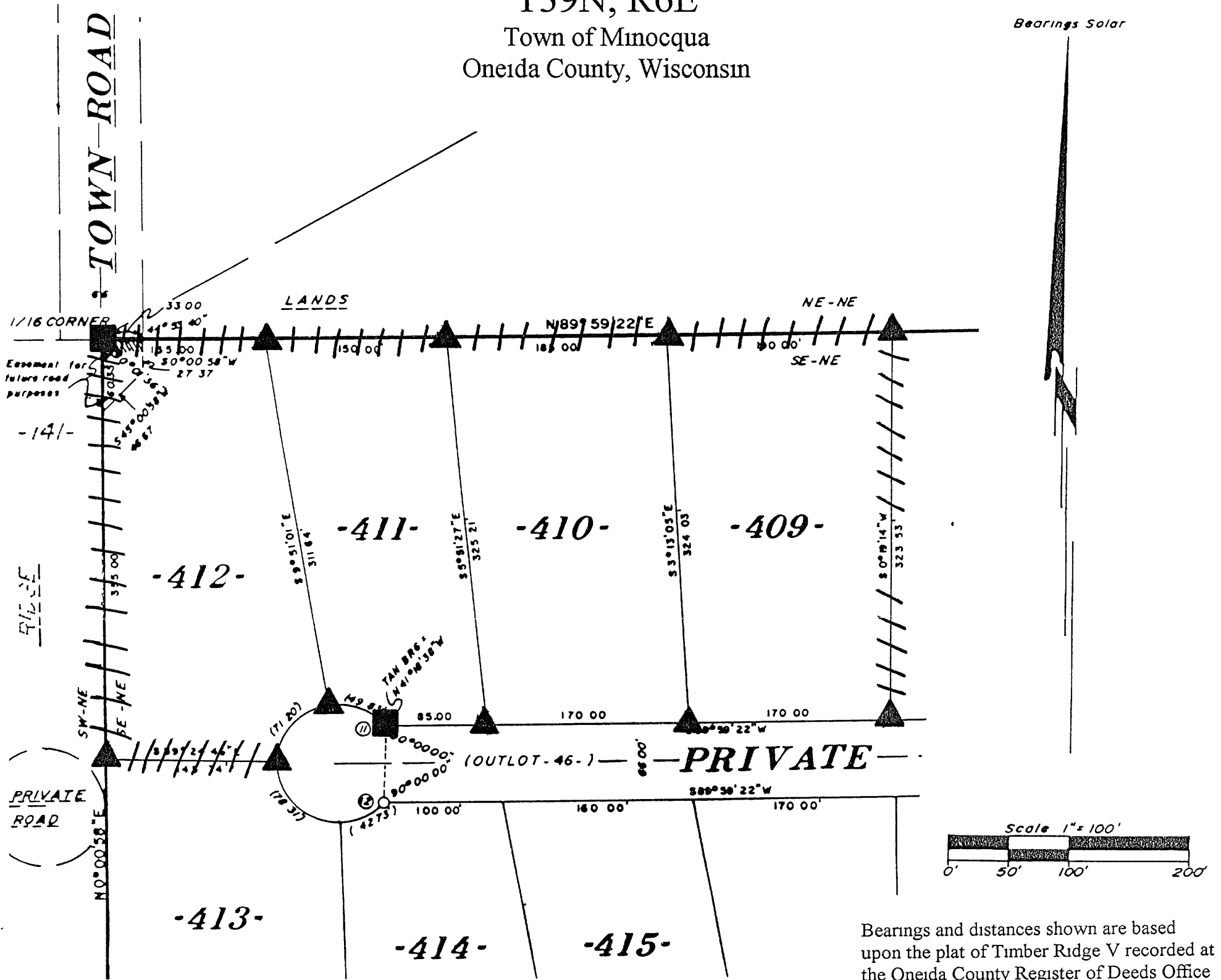


Lots 409 - 412
of
Timber Ridge V
in the
SE 1/4 of the NE 1/4
SECTION 33
T39N, R6E
Town of Minocqua
Oneida County, Wisconsin




MAP # **A 1085**
DATE FILED **DEC 28 2001**
BY **PKD**
DESCRIPTION FILED
ONEIDA CO SURVEYOR'S OFFICE



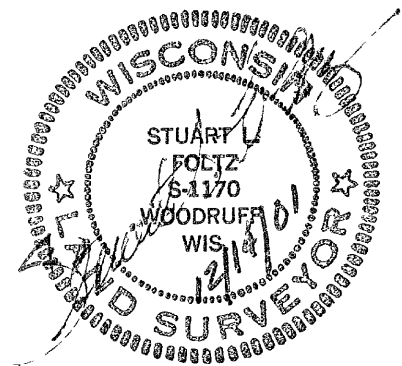
Bearings and distances shown are based upon the plat of Timber Ridge V recorded at the Oneida County Register of Deeds Office

December 14, 2001

Recovered, verified, and marked the corners and the approximate lot lines for Lots 409 through 412 of Timber Ridge V, as follows

-  = 1" iron pipe found in place
-  = 1/4" iron rod found in place
-  = Lot lines marked approximately with fluorescent surveyor's flagging ribbon

This survey was completed by Foltz and Associates, Inc for the purpose of locating existing lot corners and flagging approximate lot lines by the order of Kristen Augitto, who has executed a written waiver for all other requirements of Wis Adm Code Chap A-E 7 A closed traverse was not made and the minimum accuracy is 1 part in 100 and plus or minus 2°



Foltz and Associates, Inc.

Surveyors	Engineers
8612 Highway 51 North	Minocqua Wisconsin 54548
(715) 356-9485	fax (715) 356-1841