

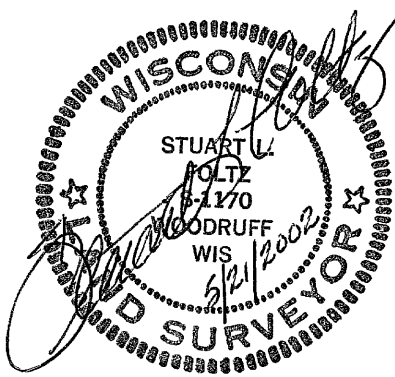
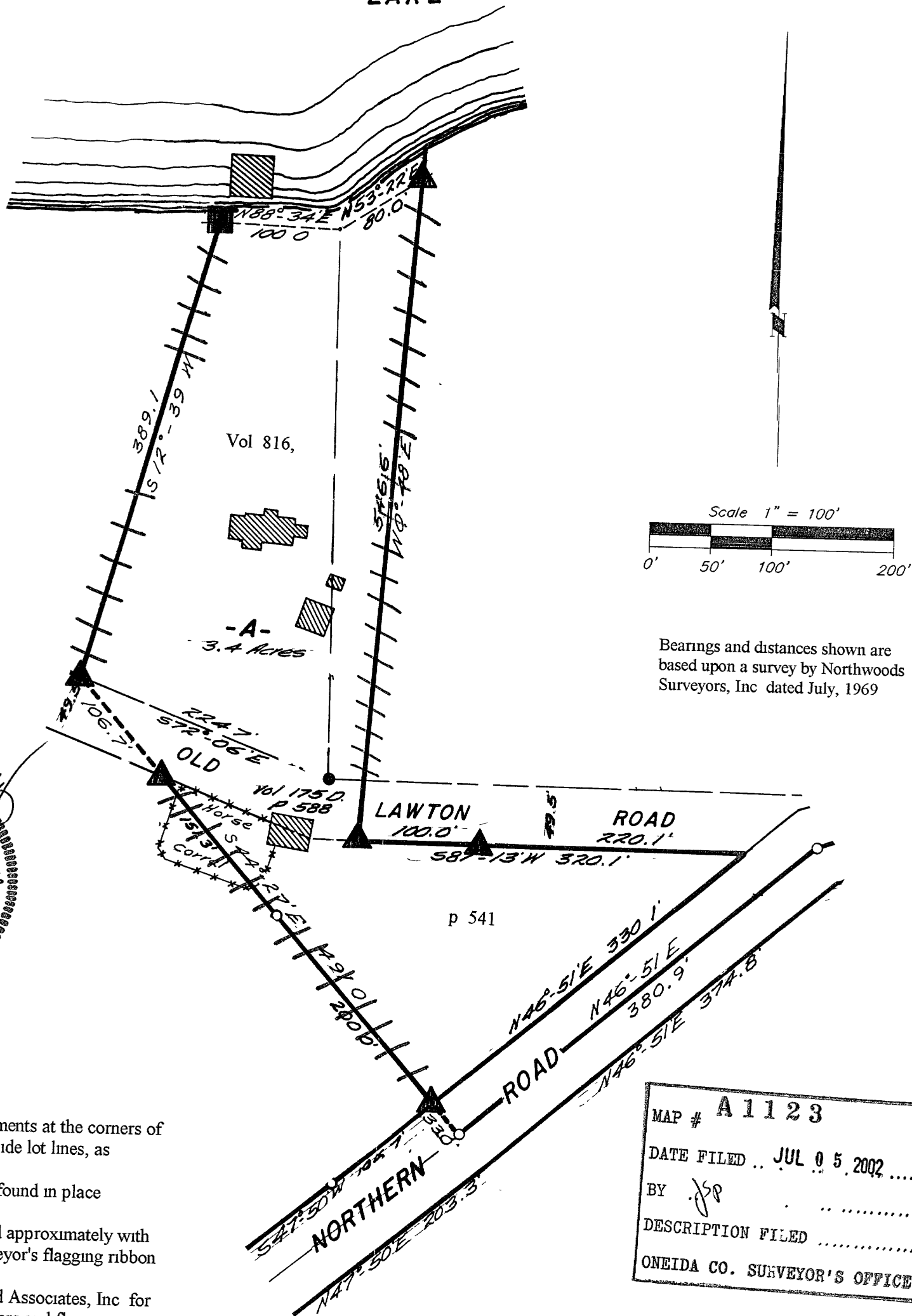
A 1123

A 1123

Part of
GOV'T. LOT 3, SECTION 23
T39N, R6E
 Minocqua Township
 Oneida County, Wisconsin

MINOCQUA

LAKE



May 20, 2002

Recovered, verified, and marked monuments at the corners of Parcel A and marked the approximate side lot lines, as follows

- ▲ = Iron monument found in place
- = Iron pipe set
- |||| = Lot lines marked approximately with fluorescent surveyor's flagging ribbon

This survey was completed by Foltz and Associates, Inc for the purpose of locating existing lot corners and flagging approximate lot lines by the order of Joan Kehoe, who has executed a written waiver for all other requirements of Wis Adm Code Chap A-E 7 A closed traverse was not made and the minimum accuracy is 1 part in 100 and plus or minus 2°

MAP # **A 1123**
 DATE FILED .. **JUL 05 2002**
 BY *JSP*
 DESCRIPTION FILED
 ONEIDA CO. SURVEYOR'S OFFICE

Foltz and Associates, Inc.

| | |
|------------------------|--------------------------|
| Surveyors | Engineers |
| 8612 Highway 51 North, | Minocqua Wisconsin 54548 |
| (715) 356-9485 | fax (715) 356-1841 |

1123

A 1123