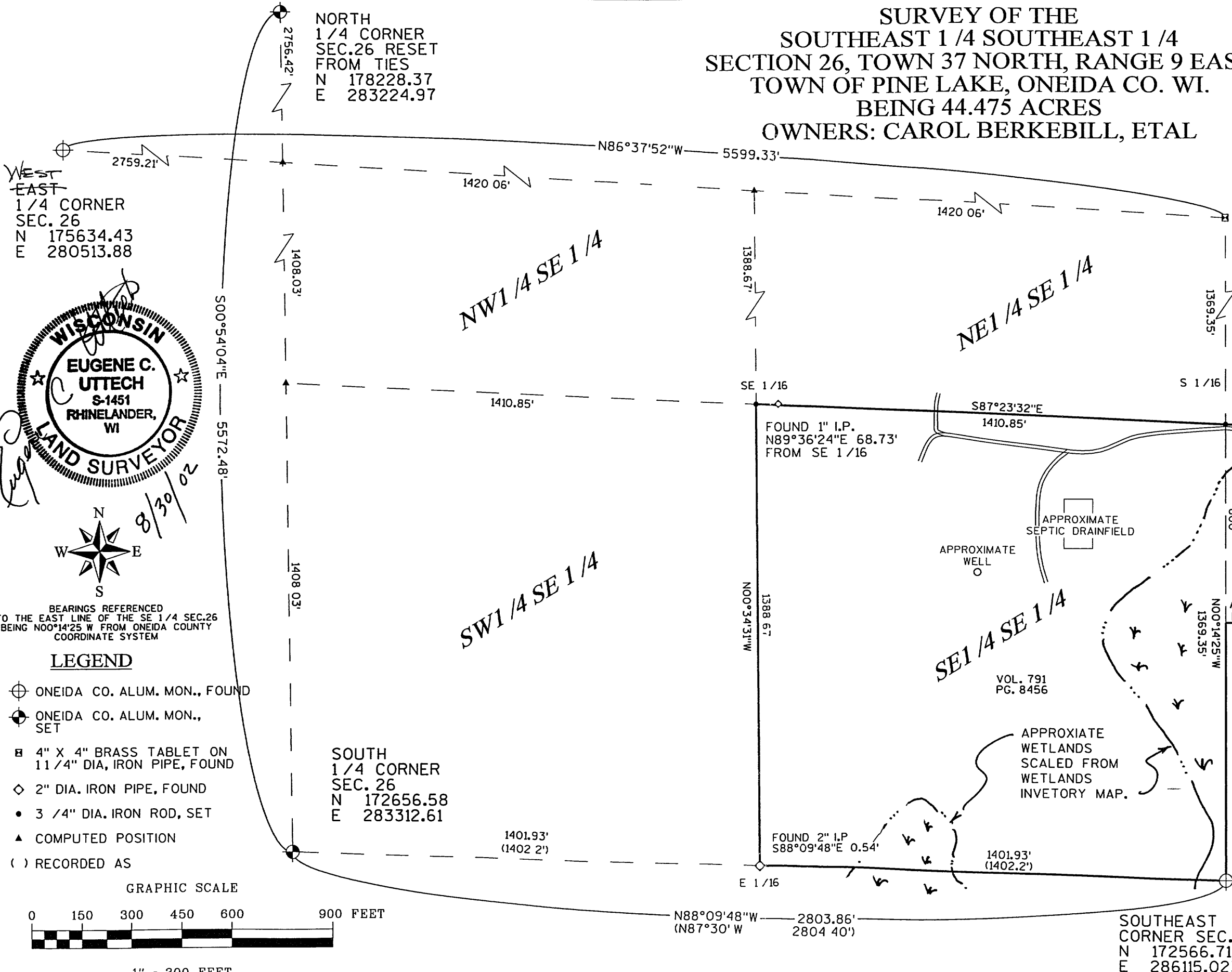


SURVEY OF THE  
SOUTHEAST 1/4 SOUTHEAST 1/4  
SECTION 26, TOWN 37 NORTH, RANGE 9 EAST  
TOWN OF PINE LAKE, ONEIDA CO. WI.  
BEING 44.475 ACRES  
OWNERS: CAROL BERKEBILL, ETAL

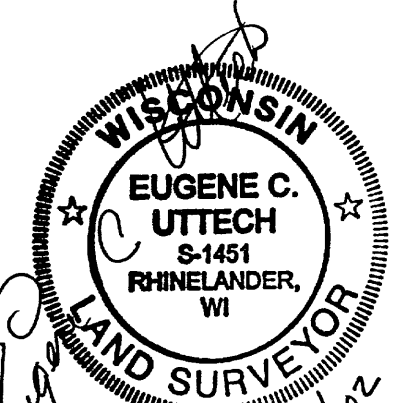
EAST  
1/4 CORNER  
SEC. 26  
N 175305.391  
E 286103.538

MAP # A 1173  
DATE FILED... 11-22-02  
BY .. R/B  
DESCRIPTION FILED  
ONEIDA CO SURVEYOR'S OFFICE



A 1173

WEST  
EAST  
1/4 CORNER  
SEC. 26  
N 175634.43  
E 280513.88

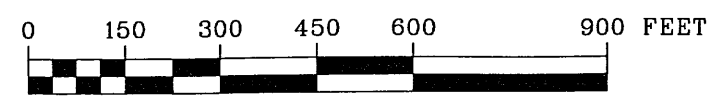


BEARINGS REFERENCED  
TO THE EAST LINE OF THE SE 1/4 SEC. 26  
BEING N00°14'25\" W FROM ONEIDA COUNTY  
COORDINATE SYSTEM

LEGEND

- ⊕ ONEIDA CO. ALUM. MON., FOUND
- ⊙ ONEIDA CO. ALUM. MON., SET
- 4" X 4" BRASS TABLET ON 1 1/4" DIA, IRON PIPE, FOUND
- ◇ 2" DIA. IRON PIPE, FOUND
- 3/4" DIA. IRON ROD, SET
- ▲ COMPUTED POSITION
- ( ) RECORDED AS

GRAPHIC SCALE



1" = 300 FEET

SOUTH  
1/4 CORNER  
SEC. 26  
N 172656.58  
E 283312.61

N88°09'48"W  
(N87°30' W) 2803.86'  
2804 40'

SOUTHEAST  
CORNER SEC. 26  
N 172566.711  
E 286115.023

APPROXIMATE  
NORTH LINE GOVT. LOT 5  
APPROXIMATE SOUTH  
LINE OF V. 791 P. 845  
MOEN LAKE  
±620' ALONG  
LAKESHORE

I, EUGENE C. UTTECH, REGISTERED  
LAND SURVEYOR OF THE STATE OF  
WISCONSIN DO HEREBY CERTIFY  
THIS IS TRUE AND CORRECT TO THE  
BEST OF MY KNOWLEDGE AND BELIEF

FIGURE 1  
MOEN LAKE  
CAMPGROUND & RESORT  
4061 LAKESHORE DRIVE  
RHINELANDER WI.



TRANSPORTATION MUNICIPAL  
DEVELOPMENT - ENVIRONMENTAL  
1815 N. Stevens St. Rhinelander, WI 54501  
715-362-3244 1-800-844-7854 Fax: 715-362-4116  
© MSA PROFESSIONAL SERVICES

DRAWN BY JLD DATE 08-13-02 SHEET 1 OF 1  
CHECKED BY ECU SCALE 1"=300' FILE NO. 980388