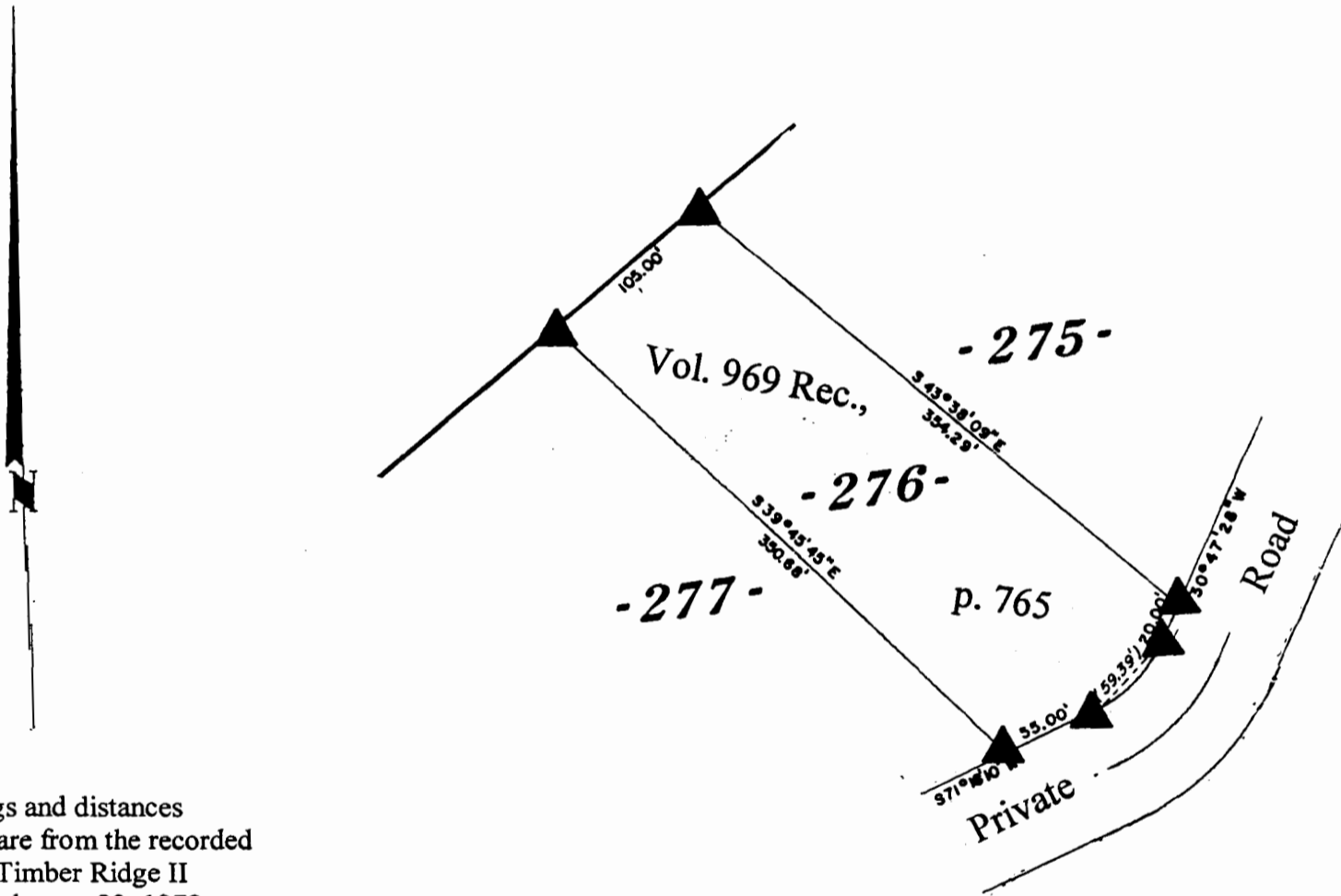


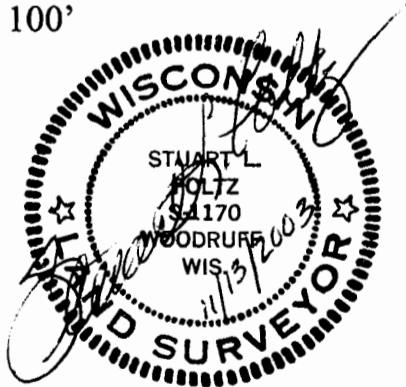
Lot 276
 of
Timber Ridge II
 in the
SE¹/₄ of the SE¹/₄
Section 33,
 and the
SW¹/₄ of the SW¹/₄,
Section 34, T39N, R6E
 Town of Minocqua
 Oneida County, Wisconsin

MAP # **A 1 2 7 1**
 DATE FILED **DEC 05 2003**
 BY *P.A.P.*
 DESCRIPTION FILED
 ONEIDA CO. SURVEYOR'S OFFICE



Bearings and distances shown are from the recorded plat of Timber Ridge II dated February 23, 1978

Scale: 1" = 100'



November 13, 2003

Recovered, verified, and marked monuments at the corners of Lot 276 of Timber Ridge II, as follows:

▲ = Iron monument found in place

This survey was completed by Foltz and Associates, Inc. for the purpose of locating existing lot corners by the order of Don Dixon, who has executed a written waiver for all other requirements of Wis. Adm. Code Chap. A-E 7. A closed traverse was not made and the minimum accuracy is 1 part in 100 and plus or minus 2°.

Foltz and Associates, Inc.

Surveyors	Engineers
8612 Highway 51 North, Minocqua, Wisconsin 54548	
(715) 356-9485	fax (715) 356-1841