

LAKE TOMAHAWK

RECEIVED & FILED # **A134**
 Oneida County Surveyor's Office
 Date **FEB. 10 1988**
 By *MJM*
 OCS Area #



M.C.

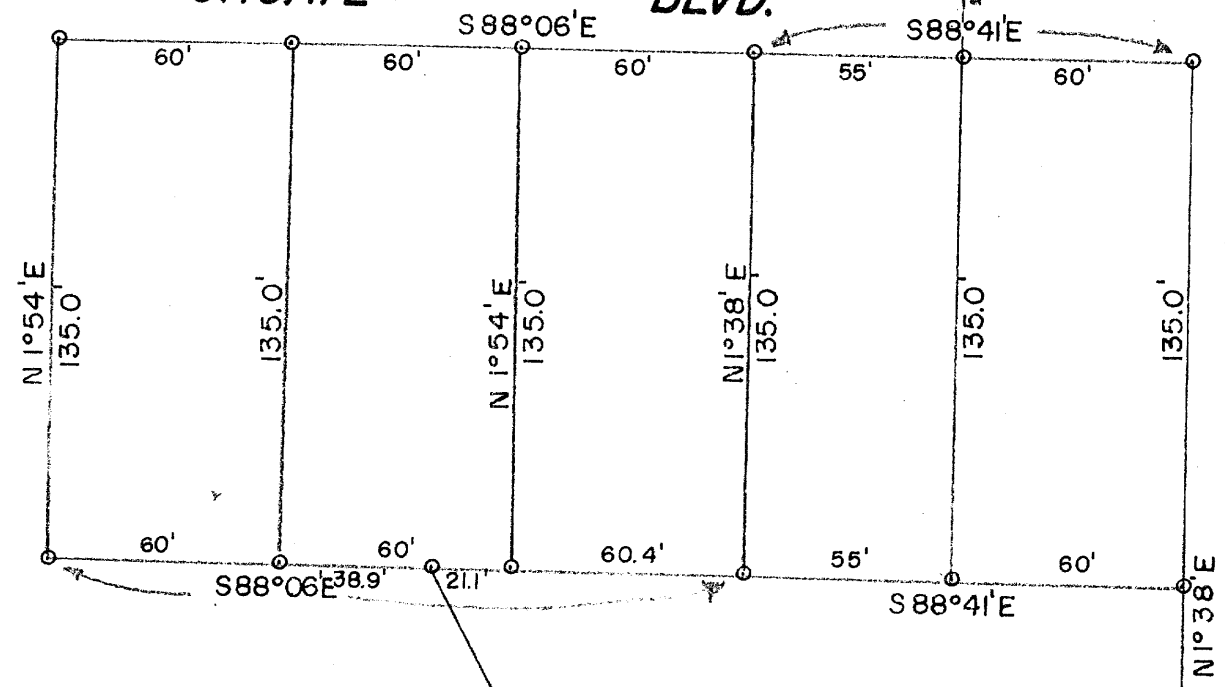
NORTH LINE

S88°06'E 481.23'

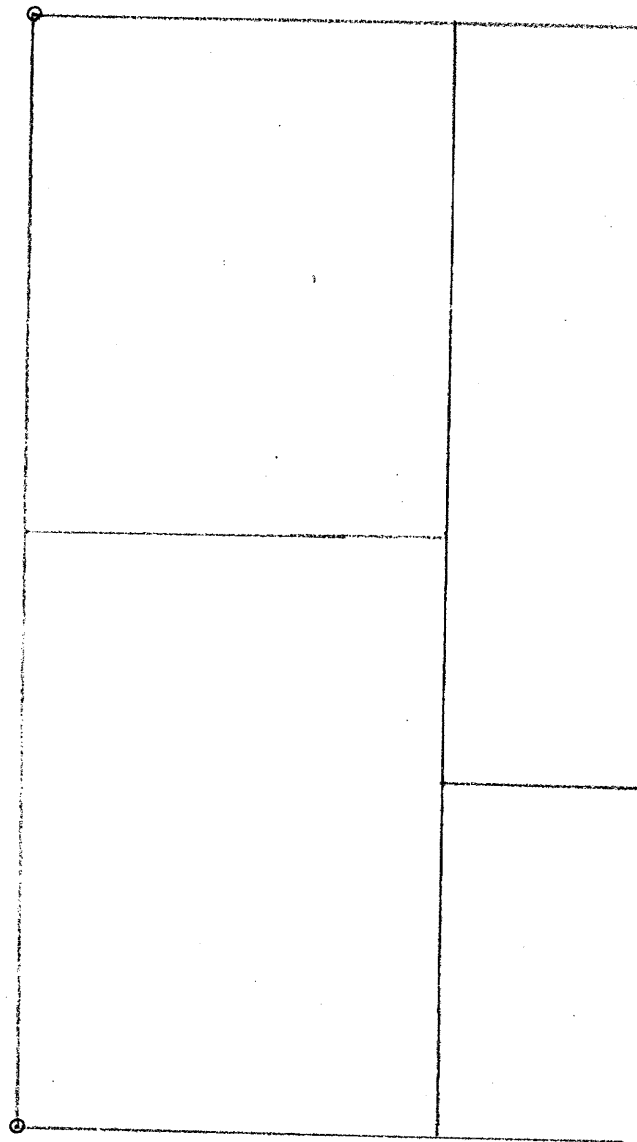
GOV'T. LOT 3, SEC. 3, TWN. 38N, R7E

CHOATE BLVD.

LAG SCREW
 26.65'
 S1°38'W



SUNSET AVE



RAINBOW ST.

A134

ROAD

REVISIONS				
NO.	DATE	BY		
1				
2				
3			ORVILLE CARLS	
4			LAKE TOMAHAWK	WISCONSIN
5			DRAWN BY K	SCALE 1" = 50'
			CHK'D	DATE 30 NOV. 62
			TRACED	APP'D
				DRAWING NO. 2930