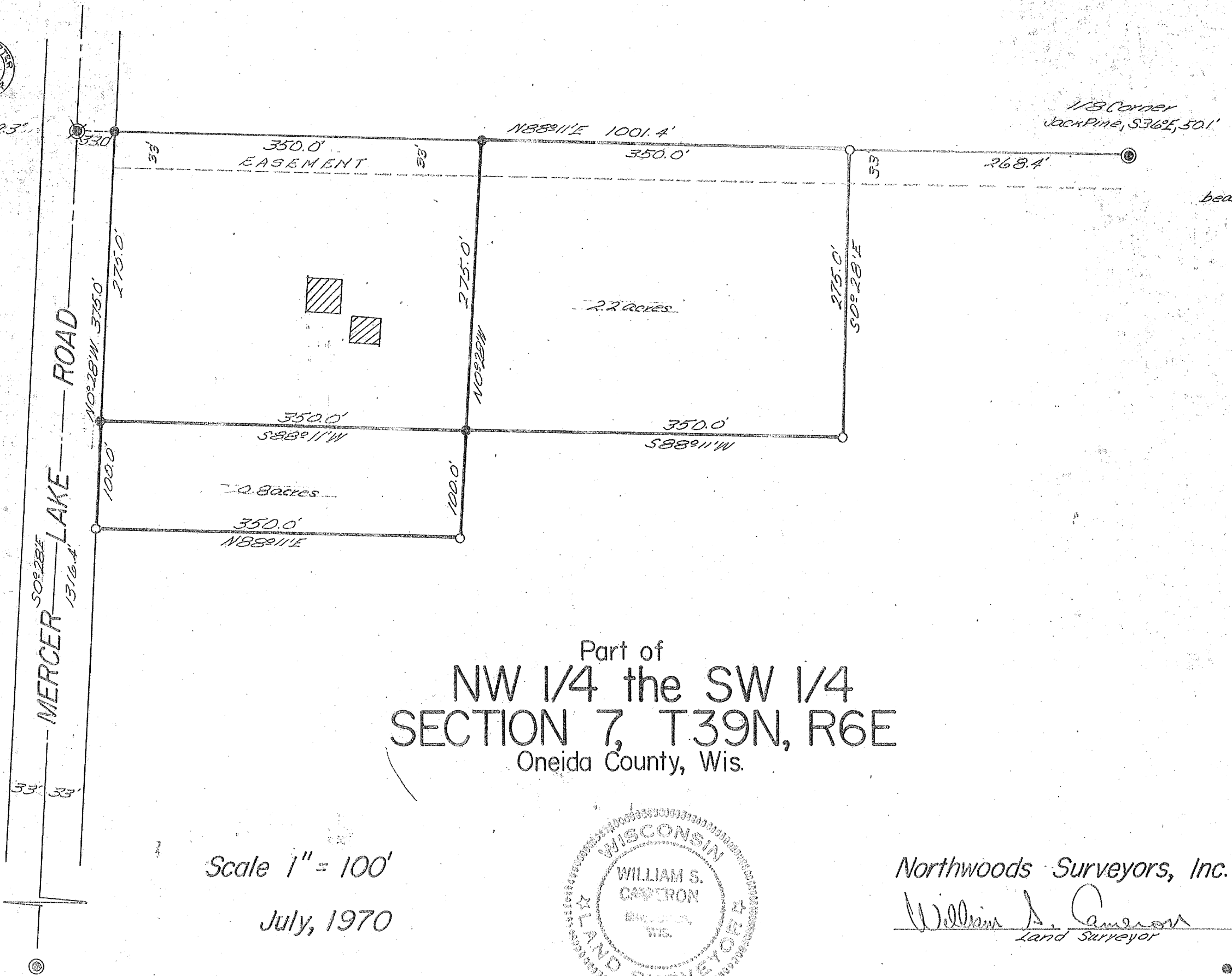




12" Jack Pine, S76°W, 52.3'

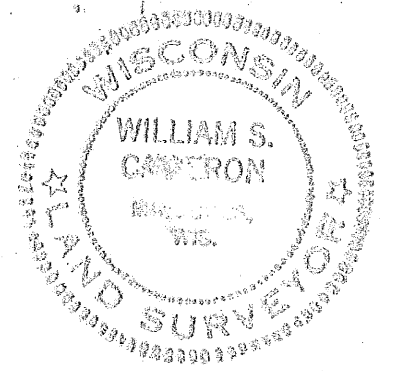
RECEIVED & FILED # **A144**
 Oneida County Surveyor's Office
 Date **FEB. 10 1986**
 By **MJA**
 OCS Area #



bearings magnetic

Part of
NW 1/4 the SW 1/4
SECTION 7, T39N, R6E
 Oneida County, Wis.

Scale 1" = 100'
 July, 1970



Northwoods Surveyors, Inc.
 William S. Cameron
 Land Surveyor

- = iron pipe found in place
- = iron pipe set
- ⊗ = cast iron plug found in place

J. Laasch

A144