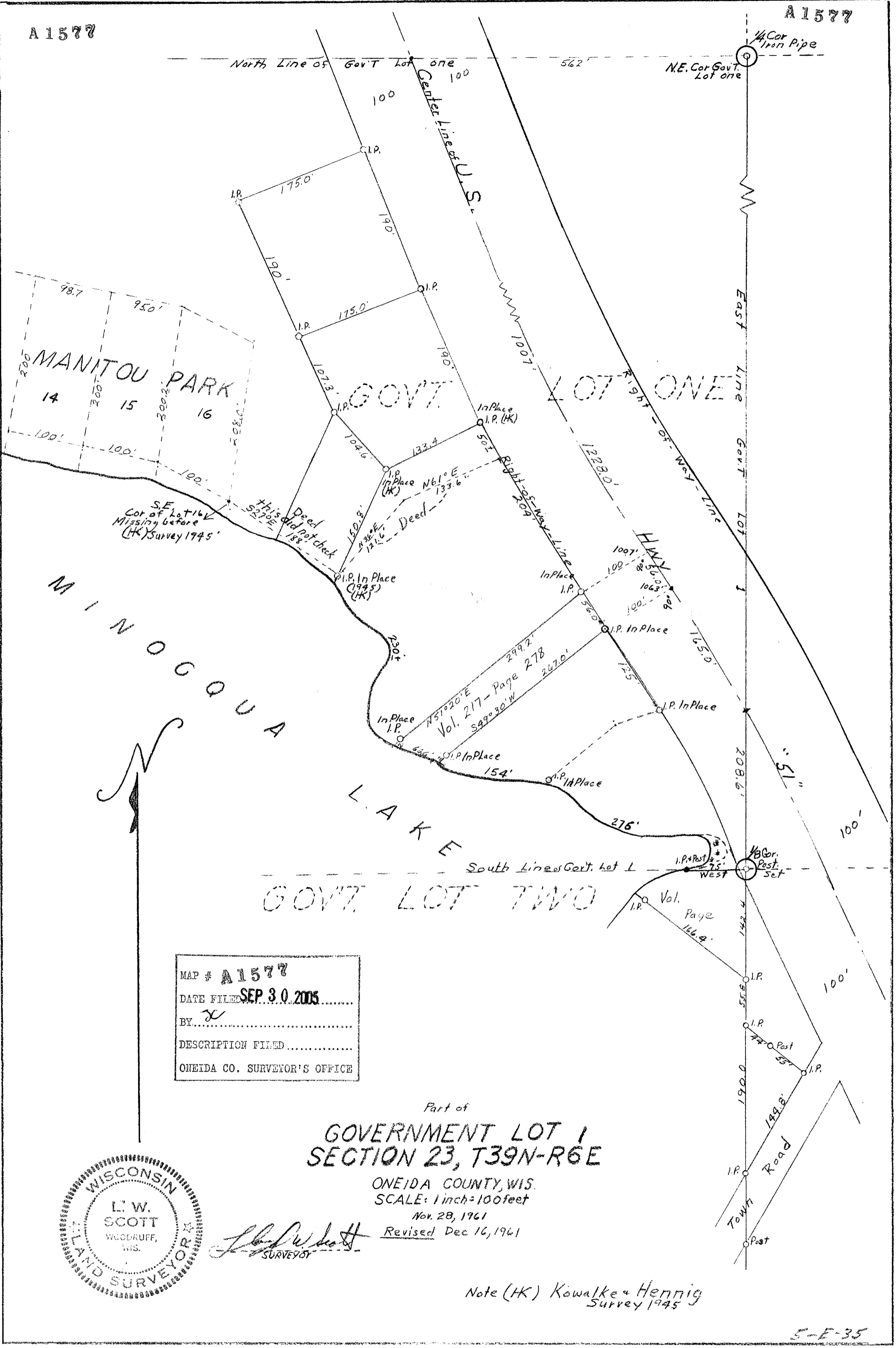


A 1577

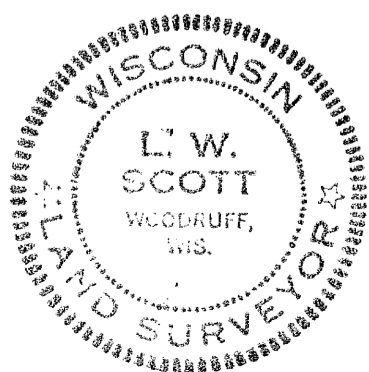
A 1577



MAP # A1577
 DATE FILED SEP 30 2005
 BY: *X*
 DESCRIPTION FILED
 ONEIDA CO. SURVEYOR'S OFFICE

Part of
**GOVERNMENT LOT 1
 SECTION 23, T39N-R6E**

ONEIDA COUNTY, WIS.
 SCALE: 1 inch = 100 feet
 Nov. 28, 1961
 Revised Dec 16, 1961



L. W. Scott
 SURVEYOR

Note (HK) Kowalke & Hennig
 Survey 1945

A1577

A1577

5-E-35