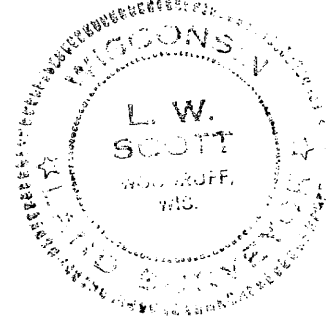


MAP # **A1605**  
 DATE FILED **OCT 06 2005**  
 BY *SC*  
 DESCRIPTION FILED  
 ONEIDA CO. SURVEYOR'S OFFICE

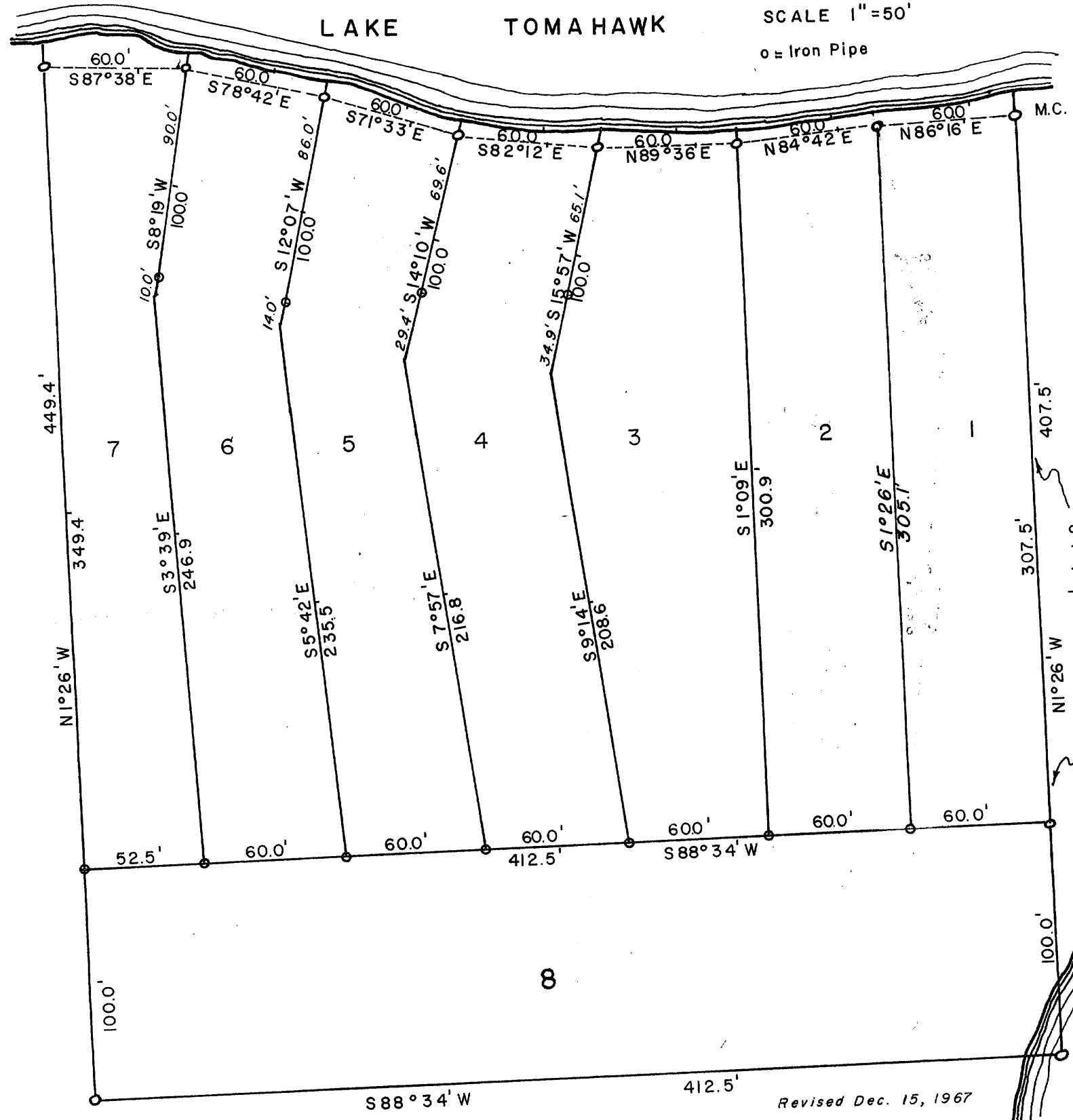
*Lloyd Scott*  
 SURVEYOR

PART OF  
**GOV'T LOT 2**  
 SECTION 4 T38N - R7E  
 ONEIDA COUNTY, WIS.  
 OCT 11966'



SCALE 1"=50'  
 o = Iron Pipe

LAKE TOMAHAWK



East line Gov't Lot 2

Revised Dec. 15, 1967

7-A-9