

2

1/8 Line
S 89° 35' W
Govt Lot 5
Govt Lot 6
Iron Pipe
Meander Corner
Concrete Mon.
163.6
MINOCQUA LAKE

PART OF
GOV'T LOT 6
SECTION 11, T39N, R6E
ONEIDA COUNTY, WIS.

Scale: 1 inch = 60 feet

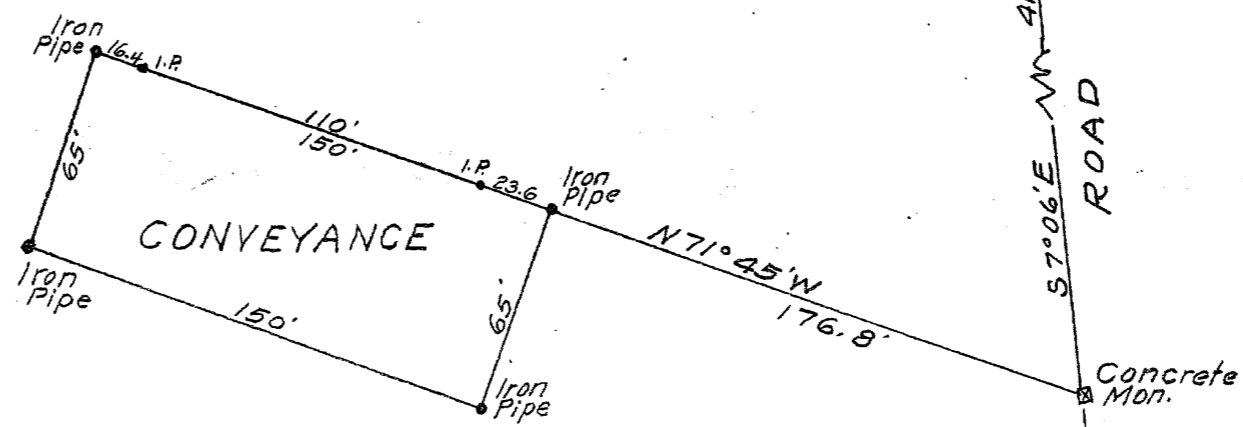
May 1954

E. J. Kowalke
Surveyor

NORTH

312.1
R-O-W Line
57° 06' E
C.M. ST.P. & P.R.Y.

TOWN ROAD
Iron Pipe
589° 35' W
170.4'
Concrete Mon.



MAP # **A1816**
 DATE FILED **OCT 26 2005**
 BY *K*
 DESCRIPTION FILED
 ONEIDA CO. SURVEYOR'S OFFICE

3-B-1