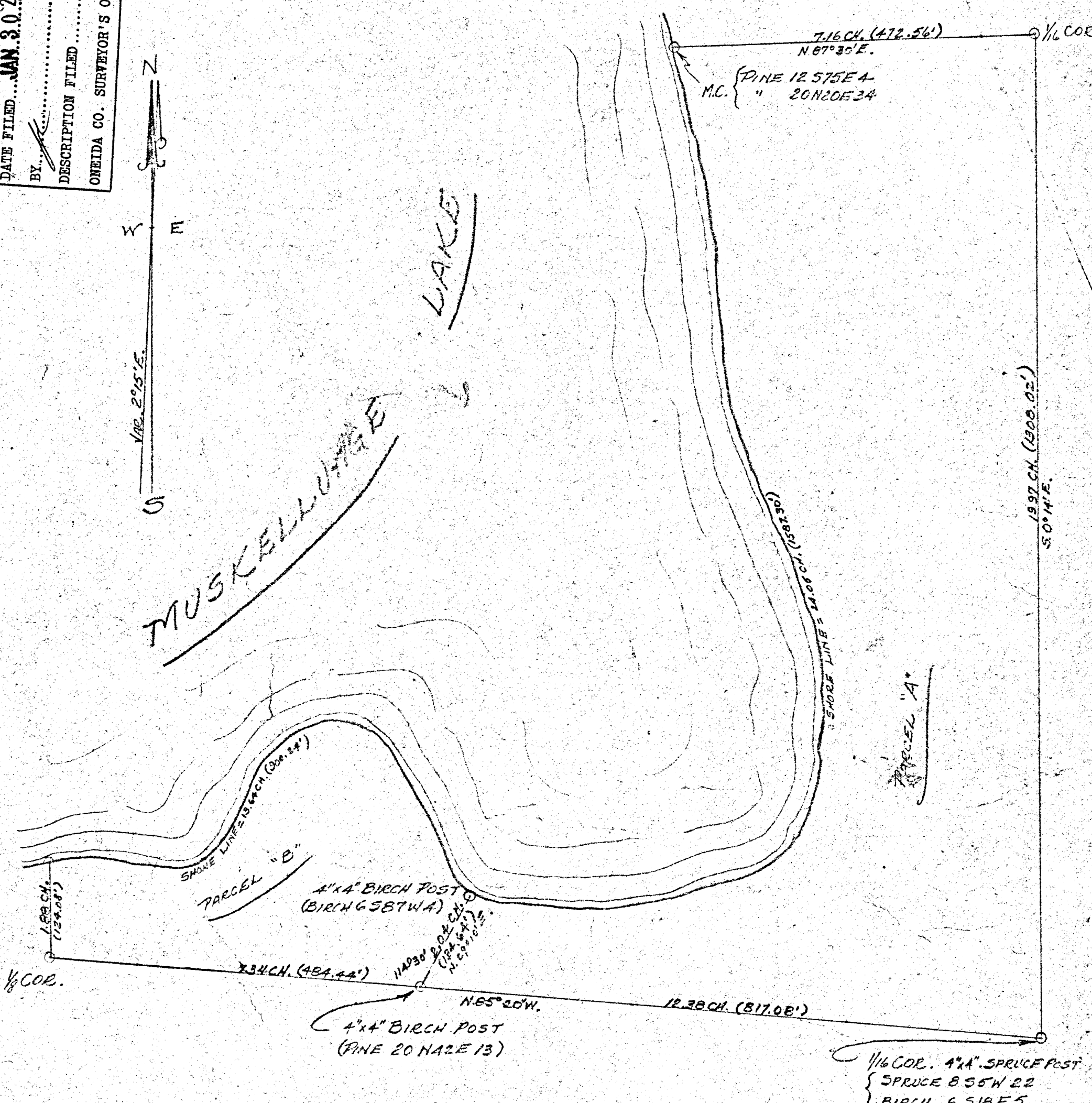


MAP # **A1711**  
 DATE FILED **JAN 30 2008**  
 BY *[Signature]*  
 DESCRIPTION FILED  
 ONEIDA CO. SURVEYOR'S OFFICE



SCALE: 1" = 2 CHAINS.

PLAT OF GOV'T. LOT 3, SEC. 10, T. 38 N., R. 8 E.,  
ONEIDA COUNTY, WISCONSIN.

PARCEL "A"

STARTING AT A MEANDER CORNER ON THE EAST SIDE OF MUSKELLUNGE LAKE AND THE EAST-WEST 1/4 LINE OF SECTION 10, T. 38 N., R. 8 E., THENCE N. 87° 30' E., 7.16 CHAINS TO THE NORTHEAST CORNER OF GOV'T. LOT 3; THENCE S. 0° 14' E., 19.97 CHAINS TO THE SOUTHEAST CORNER OF GOV'T. LOT 3; THENCE N. 85° 20' W., 12.38 CHAINS TO A WOOD POST; THENCE N. 29° 10' E., 2.04 CHAINS TO A MEANDER CORNER ON THE SOUTH SIDE OF MUSKELLUNGE LAKE; THENCE EASTERLY AND NORTHERLY ALONG THE LAKE 24.05 CHAINS, MORE OR LESS, TO THE POINT OF BEGINNING.

PARCEL "B"

STARTING AT A MEANDER CORNER ON THE SOUTH SIDE OF MUSKELLUNGE LAKE AND ON THE NORTH-SOUTH 1/4 LINE OF SECTION 10, T. 38 N., R. 8 E., THENCE SOUTHERLY ALONG SAID 1/4 LINE 1.88 CHAINS TO THE SOUTHWEST CORNER OF GOV'T. LOT 3; THENCE S. 85° 20' E., 13.64 CHAINS TO A WOOD POST; THENCE N. 29° 10' E., 2.04 CHAINS TO A MEANDER CORNER ON THE SOUTH SIDE OF MUSKELLUNGE LAKE; THENCE WESTERLY ALONG THE LAKE 13.64 CHAINS, MORE OR LESS, TO THE POINT OF BEGINNING.

SURVEYOR'S CERTIFICATE

WE HEREBY CERTIFY THAT WE HAVE SURVEYED THE ABOVE-DESCRIBED LANDS IN ONEIDA COUNTY, AND THAT THE ACCOMPANYING PLAT IS A TRUE AND CORRECT REPRESENTATION THEREOF.

*[Signature]*  
 DEPUTY COUNTY SURVEYOR  
 ONEIDA COUNTY, WIS.

SURVEY FOR A. E. MAKHOLM, RR #1, RHINELANDER, WIS.  
GENISOT. ENGINEERING CO., RHINELANDER, WIS