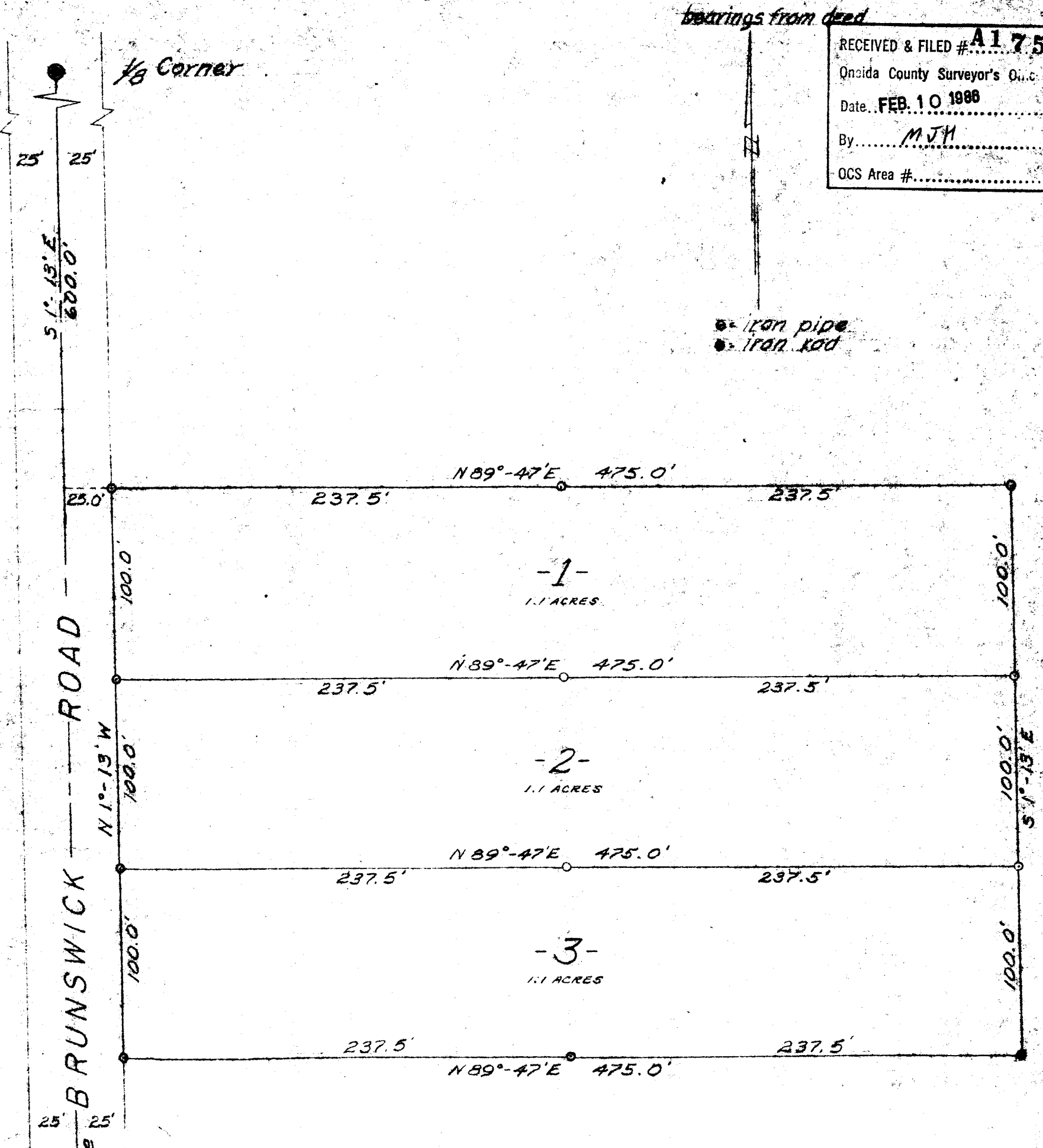


RECEIVED & FILED # **A175**
 Oneida County Surveyor's Office
 Date **FEB. 10 1988**
 By **MJM**
 OCS Area #.....



Part of
 SW 1/4 of the NE 1/4
 SECTION 12
 T 39 N, R 6 E
 Oneida County, Wis.

~~HERBERT MOORE~~
 County Surveyor
 Oneida County, Wisconsin
 Courthouse
 Rhinelander, Wisconsin 54501

James A. Fisher
 Land Surveyor

Scale 1" = 60'

September, 1964
 REVISED - MARCH, 1972

~~251~~
 J. Fisher