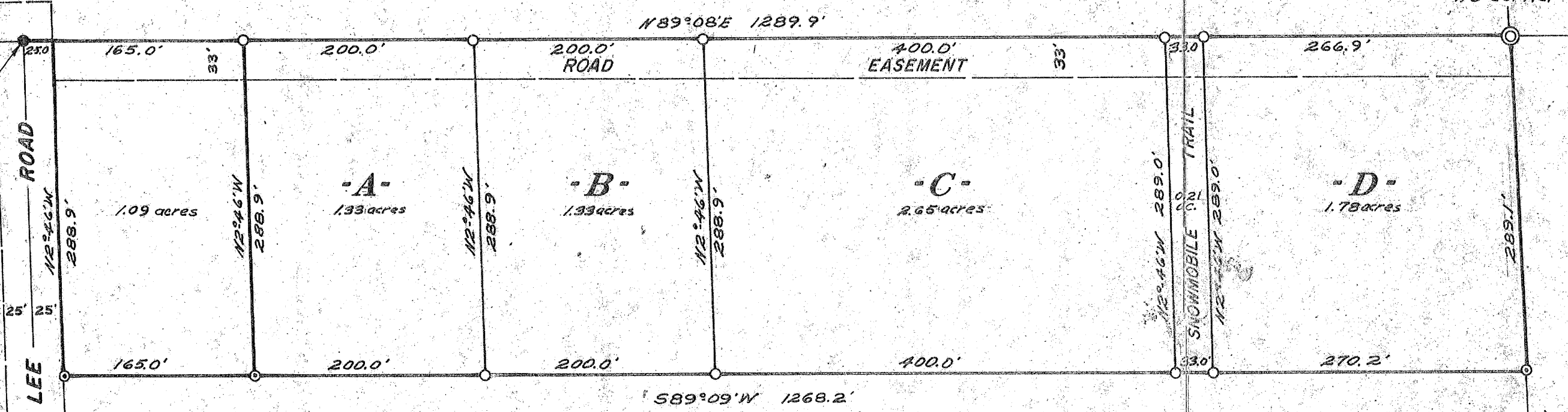


Iron pipe found in place.
 Power Pole N41°W 24.3'
 14" W. Pipe S57°E 38.4'
 Power Pole S40°W 31.9'

LEE ROAD



A199



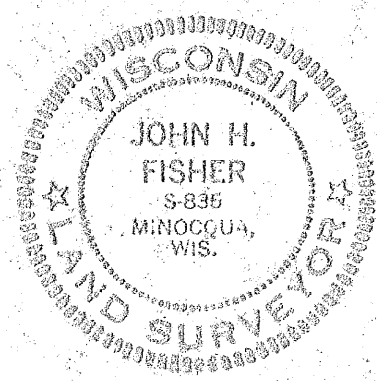
- ⊙ = Iron pipe set.
- = Iron pipe found in place.
- ⊙ ⊕ = Iron pipe set previously by Northwoods Surveyors.

Part of
NW 1/4 of the SW 1/4
SECTION 35, T 39 N, R 6 E
 Minocqua Township, Oneida County, Wisconsin

Bearings Magnetic

Scale 1" = 100'

January, 1974



HERBERT MOORE
 County Surveyor
 Oneida County, Wisconsin
 Courthouse
 Rhinelander, Wisconsin 54501
John H. Fisher
 Land Surveyor

RECEIVED & FILED # **A199**
 Oneida County Surveyor's Office
 Date **FEB 10 1974**
 By **MJH**
 OS Area #

1/8 Corner

1/16 Corner

J. Kraemer