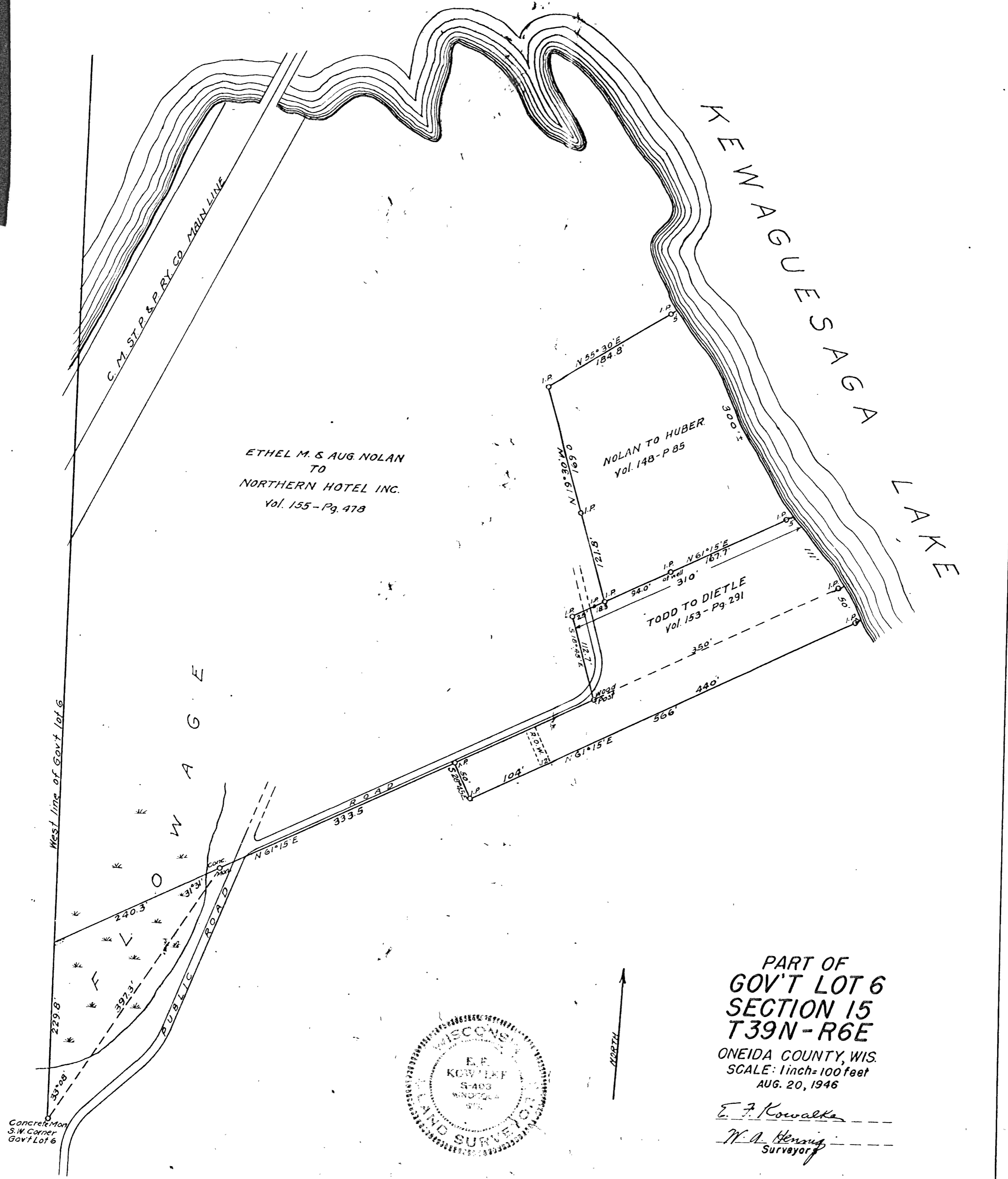


MAP # A 2099  
 DATE FILED MAY 01 1946  
 BY JRS  
 DESCRIPTION FILED  
 ONEIDA CO. SURVEYOR'S OFFICE



PART OF  
 GOV'T LOT 6  
 SECTION 15  
 T39N-R6E  
 ONEIDA COUNTY, WIS.  
 SCALE: 1 inch = 100 feet  
 AUG. 20, 1946

E. F. Kowalka  
 W. A. Henning  
 Surveyor