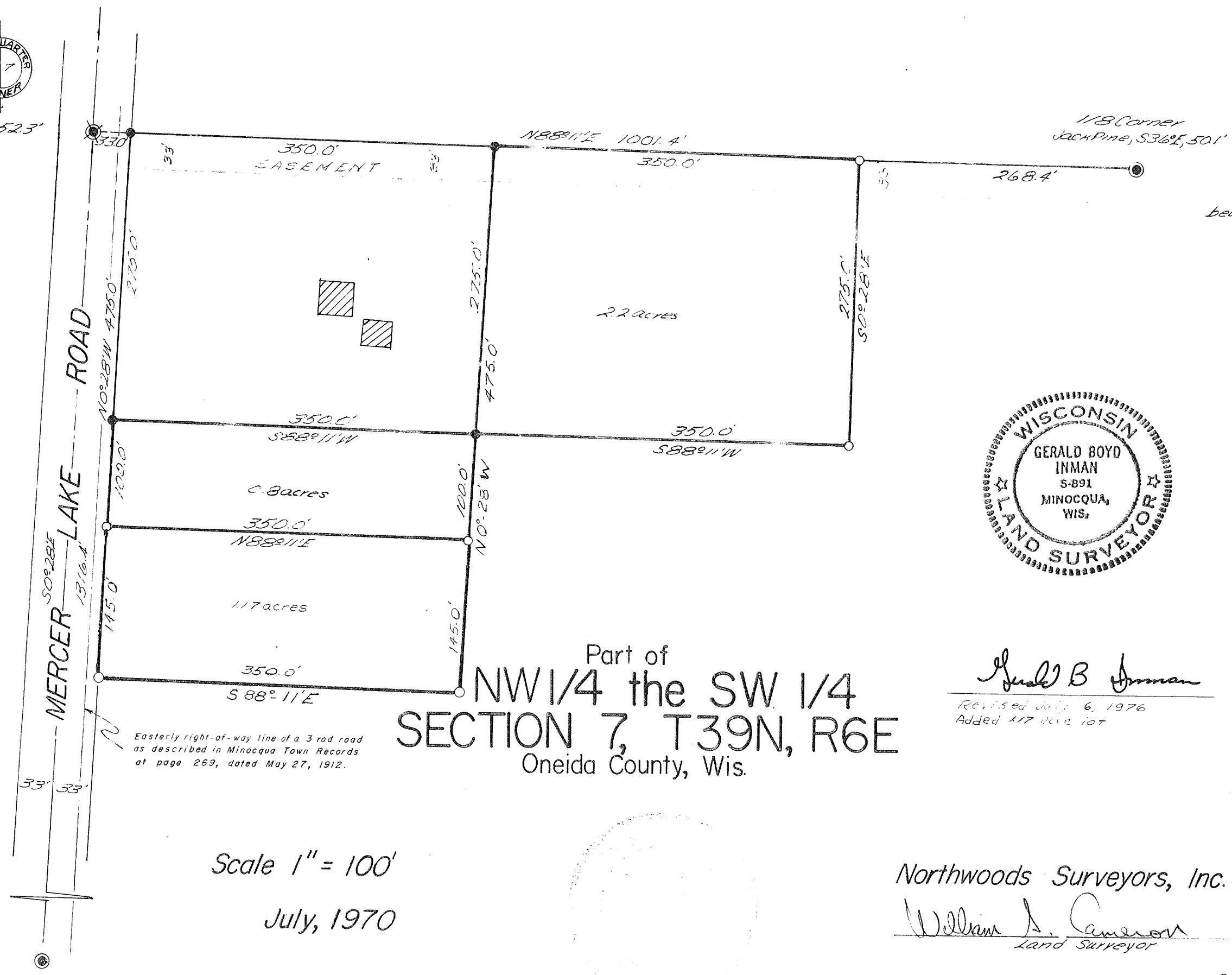


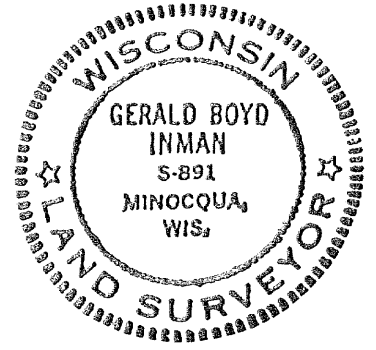


12" Jack Pine, S76°W, 52.3'

RECEIVED & FILED #A219
Oneida County Surveyor's Office
Date, FEB. 10 1988
By, M.R.H.
OCS Area #.



Part of
NW 1/4 the SW 1/4
SECTION 7, T39N, R6E
Oneida County, Wis.



Gerald B Inman
Revised July 6, 1976
Added 1.7 acre lot

Scale 1" = 100'
July, 1970

Northwoods Surveyors, Inc.
William J. Cameron
Land Surveyor

RECEIVED & FILED #A219
Oneida County Surveyor's Office
Date, 14 May 77
By, D.M. Weinat
OCS Area # 12-7-3906

- - iron pipe found in place
- - iron pipe set
- ⊗ - cast iron plug found in place

A219